

Contents

1. Setup:Installation Manual/Optimization/Caching	2
2. Setup:Installation Guide/Security Settings/File System Permissions	5
3. Setup:Installation Guide/System Preparation/Linux/Memcached	9
4. Setup:Installation Manual/Optimization/Cronjobs	10

Setup:Installation Manual/Optimization/Caching

Contents

1 Tips for the Document	3
2 Linux vs. Windows	3
3 Indicate Cache-Directory	3
4 Name Resolution of the Database	3
5 Activate Memcached	4
6 Increase PHP Memory Limit	4
7 Activate Bytecode Cache in PHP	4
8 Deactivate JobQueue	5

This document describes different caching options to enhance the performance of your BlueSpice installation.

Tips for the Document

- Please, read this manual completely and work through the single installation steps one after another.
- For editing the configuration files with a text editor, the files must be saved in UTF-8 coding without BOM (Byte Order Mark).
- The placeholder `<installpath-bluespice>` stands for the path to your BlueSpice installation, e.g. `C:\inetpub\wwwroot\bluespice` (Windows) or `/var/www/bluespice` (Linux).

Linux vs. Windows

Please note that with equal hardware conditions, BlueSpice empirically runs more performantly on Linux than on Windows servers.

Indicate Cache-Directory

This forces BlueSpice to use the filesystem instead of the database for some internal caches. To do this, create the file `<installpath-bluespice>/settings.d/001-Directories.php` and add the following content:

```
<?php
$wgCacheDirectory = "$IP/cache";
```

Save and close the file.



Note that the directory "cache" in `<installpath-bluespice>` must be writable by the web server. For more information, read the [file system permissions](#).

Name Resolution of the Database

If this hasn't already been done while setting up MediaWiki, please make sure that the database server will be addressed via IP if it runs on the same server than BlueSpice. Especially Windows has problems with the resolution of "localhost".

To do this, open `<installpath-bluespice>/LocalSettings.php` and locate the variable **\$wgDBserver**. The line should ideally be:

```
$wgDBserver = "127.0.0.1";
```

Activate Memcached

Create the file `<installpath-bluespice>/settings.d/001-Memcached.php` and add the following content:

```
<?php
$wgMainCacheType = CACHE_MEMCACHED;
$wgSessionCacheType = CACHE_DB;
$wgMemCachedServers = [ "127.0.0.1:11211" ];
```

Save and close the file.



The prerequisite is an installed and configured memcached server on the BlueSpice server. Read the [memcached](#) article for more information.

Increase PHP Memory Limit

A higher memory limit of PHP results in a faster execution. ¶ This can be changed in `php.ini`. Locate and adjust the following option:

```
memory_limit = 512M (means 512 MB - varies from the available memory)
```

After saving and closing `php.ini`, the web server must be restarted.

Activate Bytecode Cache in PHP

Since PHP 5.5 the bytecode cache "opcache" is included.

This needs to be activated in the `php.ini` first. Check if the module is integrated there. This is done via the line:

```
zend_extension=opcache.dll (Windows)
zend_extension=opcache.so (Linux)
```



Please also note the specification of the distributor for activating PHP modules under Linux.

Please, do the following configuration of the opcache in php.ini. Normally, all options should already exist, but are commented out by semicolon (;) at the beginning of the line. Locate the respective option in php.ini, remove the semicolon at the beginning of the line and adjust the settings as follows:

```
opcache.enable=1
opcache.memory_consumption=512 (means 512 MB - varies from the available memory)
opcache.max_accelerated_files=5000
opcache.validate_timestamps=1
opcache.revalidate_freq=2
```

After saving and closing php.ini, the web server must be restarted.

Deactivate JobQueue

For this, read the [paragraph "runJobs.php" in the "Cronjobs" article](#).

File System Permissions

Contents

1	Tips for this Document	6
2	Affected Folders	6
3	Assignment of Permissions with Windows	6
4	Assignment of Permissions with Linux	7

For trouble-free usage of your BlueSpice installation, the web server requires write permissions to several folders of the file system. However, it is recommended to keep the rights for all other files and folders to a minimum. This document shows you the relevant folders and the correct permissions setting.

Tips for this Document

- Please, read this manual completely and work through the single installation steps one after another.
- For editing the configuration files with a text editor, the files must be saved in UTF-8 coding without BOM (Byte Order Mark).
- The placeholder `<installpath-bluespice>` stands for the path to your BlueSpice installation, e.g. `C:\inetpub\wwwroot\bluespice` (Windows) or `/var/www/bluespice` (Linux).

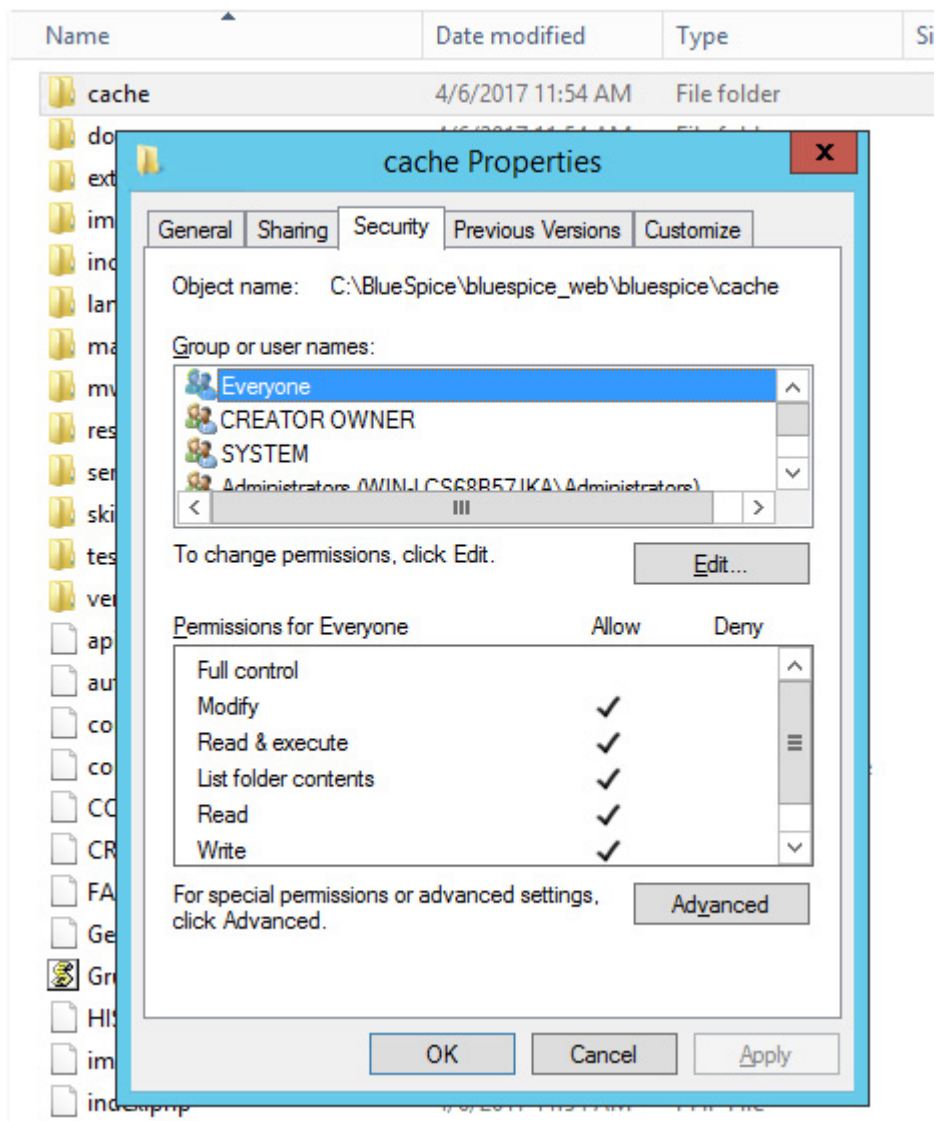
Affected Folders

The folders, which require write permissions, are:

- `<installpath-bluespice>/cache`
- `<installpath-bluespice>/images`
- `<installpath-bluespice>/extensions/BlueSpiceFoundation/config`
- `<installpath-bluespice>/extensions/BlueSpiceFoundation/data`
- `<installpath-bluespice>/extensions/Widgets/compiled_templates` (**only BlueSpice pro**)

Assignment of Permissions with Windows

Assign "change" rights for this folder for the local user "Everyone".



Assignment of Permissions with Linux

Here you can assign rights much more strictly, which is also recommended. Transfer the directory `<installpath-bluespice>` recursively to the user root (CHMOD for Files 644, CHMOD for Directories 755) and after this, transfer the mentioned directory recursively to the user and the group, under which the Apache Web Server runs (Debian/Ubuntu e.g. "www-data").

In the following, we provide a bash script, which works through this tasks for you with only one command.

To do so, create the file `/usr/local/bin/setWikiPerm` and copy the following code into this file:

```
#!/bin/bash

WWW_USER="www-data"
WWW_GROUP="www-data"

WWW_HOME=`eval echo ~$WWW_USER`
```

```
WWW_CFG=$WWW_HOME/.config

if [ $# -eq 0 ]; then
    echo "You must enter the path of your MediaWiki installation."
    exit
elif [ ! -d $1 ]; then
    echo "$1 does not exist or is no path."
    exit
fi

if [ ! -f $1/LocalSettings.php ]; then
    echo "$1 contains no Localsettings.php"
    exit
fi

PATH=`echo "$1" | sed -e 's#/###'`

/usr/bin/find $PATH -type d -exec /bin/chmod 755 {} \;
/usr/bin/find $PATH -type f -exec /bin/chmod 644 {} \;

/bin/chown -R root:root $PATH

pathes=(
    "$PATH/cache" \
    "$PATH/images" \
    "$PATH/_sf_archive" \
    "$PATH/_sf_instances" \
    "$PATH/extensions/BlueSpiceFoundation/data" \
    "$PATH/extensions/BlueSpiceFoundation/config" \
    "$PATH/extensions/Widgets/compiled_templates" \
)

for i in "${pathes[@]"; do
    if [ -d $i ]; then
        /bin/chown -R $WWW_USER:$WWW_GROUP $i
    fi
done

if [ ! -d $WWW_CFG ]; then
    /bin/mkdir $WWW_CFG
fi

/bin/chown -R $WWW_USER:$WWW_GROUP $WWW_CFG

/usr/bin/find $PATH/extensions -iname 'create_pygmentize_bundle' -exec /bin/chmod +x {} \;
/usr/bin/find $PATH/extensions -iname 'pygmentize' -exec /bin/chmod +x {} \;
/usr/bin/find $PATH/extensions -name 'lua' -type f -exec /bin/chmod 755 {} \;
```

If needed, replace the content of the variables

```
WWW_USER="www-data"
WWW_GROUP="www-data"
```

with the appropriate user and group of your distribution.

After this, assign CHMOD 755 to this file. Now you can run the script and let it do the complete permission setting automatically with the following command:

```
setWikiPerm <installpath-bluespice>
```




Note that when the update.php is executed on the console, the rights can be partially discarded. For this reason, set the rights to "update.php" again.

Memcached on Linux

Contents

1 Installation	10
2 Configuration	10
3 Next step	10



Memcached is a cache server to improve the performance of your BlueSpice installation. It is not required for the actual operation of BlueSpice. The steps listed here are therefore optional.

Installation

Install Memcached with Aptitude:

```
apt-get update; \  
apt-get -y install memcached; \  
apt-get clean
```

Configuration

Open the file containing the memcached configuration (for example, /etc/memcached.conf on Debian / Ubuntu). Find the '-m' argument there and increase the available memory according to your server's capabilities:

```
-m 512
```

Save and close the file and restart memcached with `service memcached restart`.

Next step

If you have completed all steps successfully and want to install BlueSpice pro, proceed to the next step "[Texvc](#)". If you want to install BlueSpice free, you can now continue with [Installing BlueSpice](#).

Cronjobs

Contents

1 Tips for this Document	11
2 runjobs.php	11
3 processBsEmailBatch.php	11

This document describes cronjobs and related configurations, which should be set for your BlueSpice (depending on the used version).

Tips for this Document

- Please, read this manual completely and work through the single installation steps one after another.
- For editing the configuration files with a text editor, the files must be saved in UTF-8 coding without BOM (Byte Order Mark).
- The placeholder `<installpath-bluespice>` stands for the path to your BlueSpice installation, e.g. `C:\inetpub\wwwroot\bluespice` (Windows regarding the documentation "[Folder structure under Windows](#)") or `/var/www/bluespice` (Linux).
- The placeholder `<tomcat-webapps` stands for the path to the webapps directory of your Tomcat server, e.g. `C:\Program Files\Apache Software Foundation\Tomcat 8.5\webapps` (Windows) or `/var/lib/tomcat8/webapps` (Linux).

runJobs.php

Time-consuming processes will be moved to a processing queue in the background of BlueSpice. With every page impression, a part of these will be processed. For the case that there are lots of processes in the queue and there are relatively little page impressions, the tasks will not be processed promptly.

For this reason, the queue should be processed regularly by cronjob.

Now create a cronjob (Windows: "Scheduled task") depending on your operating system. The command to execute is:

```
php <installpath-bluespice>/maintenance/runJobs.php (Linux)
php.exe <installpath-bluespice>\maintenance\runJobs.php (Windows)
```



It is recommended to specify the complete path to php.exe under Windows. For more information, see the [environment variables](#) document.

Execute the cronjob every **10 minutes**.

processBsEmailBatch.php

For reports via email sent from MediaWiki, please create a cronjob and run it daily. The command for this is:

```
php <installpath-bluespice>/extensions/BlueSpiceEchoConnector/maintenance  
/processBsfEmailBatch.php (Linux)  
php.exe <installpath-bluespice>\extensions\BlueSpiceEchoConnector\maintenance\processB  
sfEmailBatch.php (Windows)
```



It is recommended to specify the complete path to php.exe under Windows. For more information, see the [environment variables](#) document.