

Contents

1. Setup:Installation Guide/System Preparation/Windows/PHP Manager	2
2. Setup:Installation Guide/System Preparation/Windows/PHP	5

Setup:Installation Guide/System Preparation/Windows/PHP
Manager

Contents

1	Download	3
2	Installation	4
3	Next step	5



PHP Manager conveniently integrates PHP into your IIS installation. The steps listed here are required.

Download



The content of this section refers to external sources and is current at the time of writing this documentation. We cannot guarantee how long these sources will remain unchanged. Please let us know if you notice any discrepancies to the information provided here.

Open the [official website at iis.net](https://www.iis.net) (1) and click "Download this extension" (2).

We are excited to announce that the IIS.NET Forums are moving to the new Microsoft Q&A experience. Learn more >

Microsoft

IIS Home Manage Downloads Learn Reference Solutions Blogs Forums

All Downloads Community Contributed Downloads Microsoft Supported Downloads Free Web Platform Installer

Home > Downloads > Community Contributed Downloads > PHP Manager 1.5.0 for IIS 10

PHP Manager 1.5.0 for IIS 10

This is a Community Contributed Download

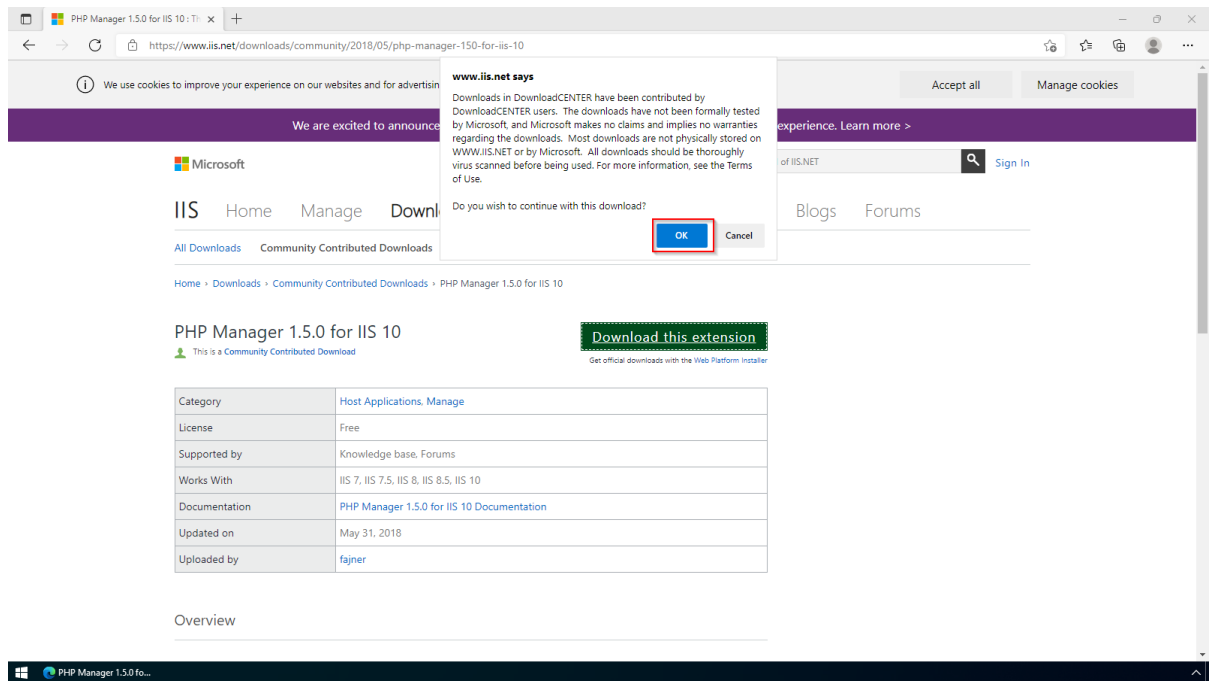
Download this extension

Get official downloads with the Web Platform Installer

Category	Host Applications, Manage
License	Free
Supported by	Knowledge base, Forums
Works With	IIS 7, IIS 7.5, IIS 8, IIS 8.5, IIS 10
Documentation	PHP Manager 1.5.0 for IIS 10 Documentation
Updated on	May 31, 2018
Uploaded by	fajner

Overview

Click "OK" after reading the disclaimer:

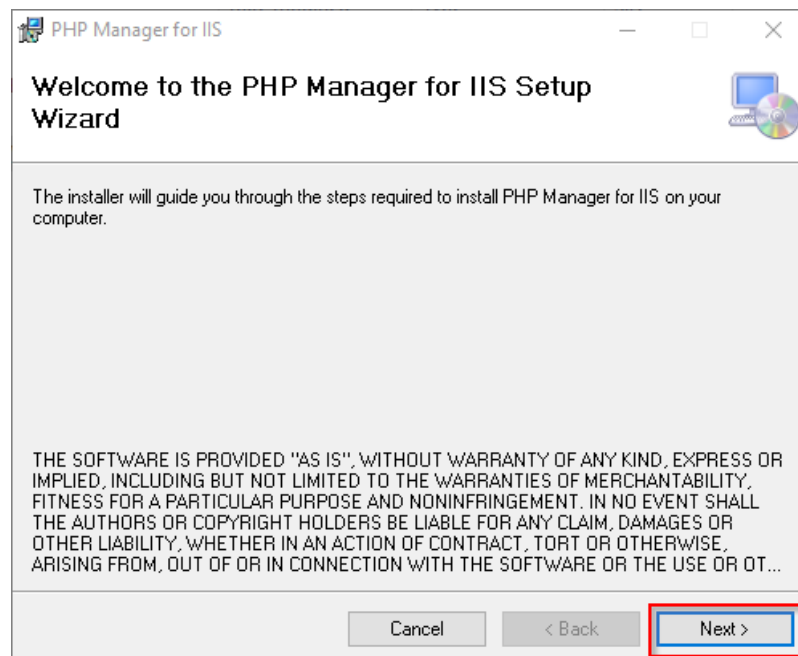


Follow the download instructions of your browser.

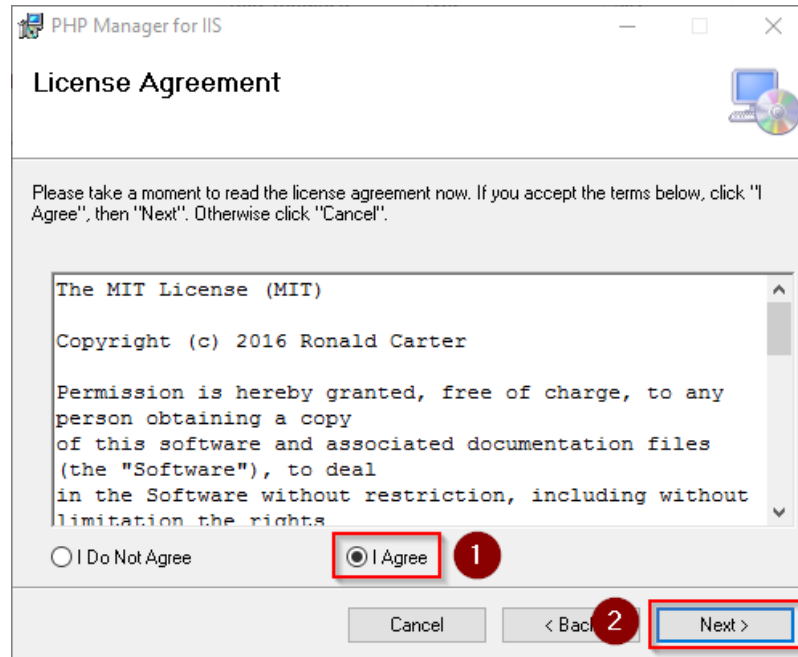
Installation

Open the installation file which you have just downloaded.

Click "Next >" to start the installation:

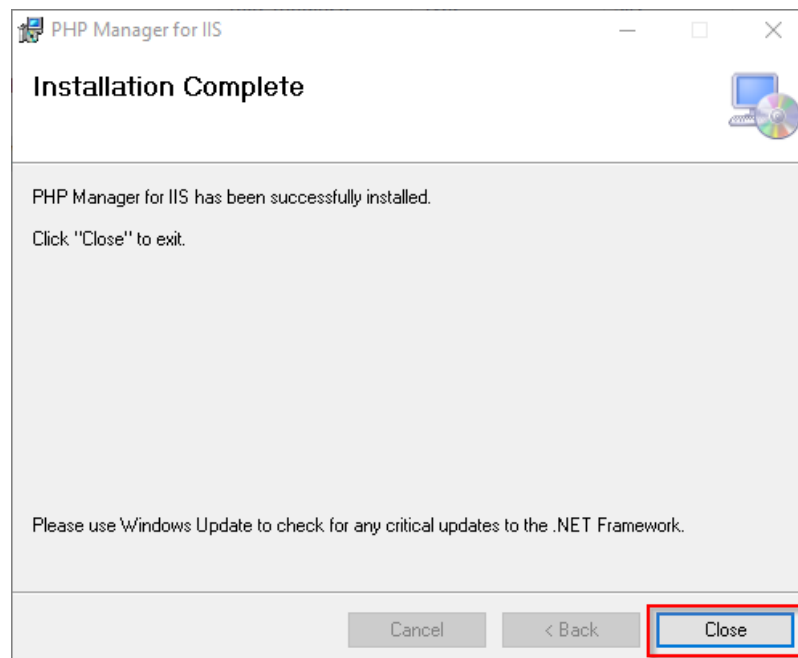


Select "I agree" (1) in the License Agreement and **click** "Next >" (2):



The installation is now executed and completed without further confirmation.

Close the setup program when finished:



Next step

If you have successfully completed all of the above steps, go to the next step: [PHP](#).

Setup:Installation Guide/System Preparation/Windows/PHP

Contents

1 Download	7
2 Unpacking the ZIP archive	8
3 Setting the environment variable	8
4 Checking the environment variable	12
5 Configuring IIS for PHP	13
6 Next step	23



The source code of BlueSpice is based on the scripting language "PHP". It must be installed on your server in order to operate BlueSpice. The steps listed here are required.



PHP is not installed with a "classic installation package" but the sources are downloaded and integrated into IIS via the **PHP Manager** that you installed in the previous step.

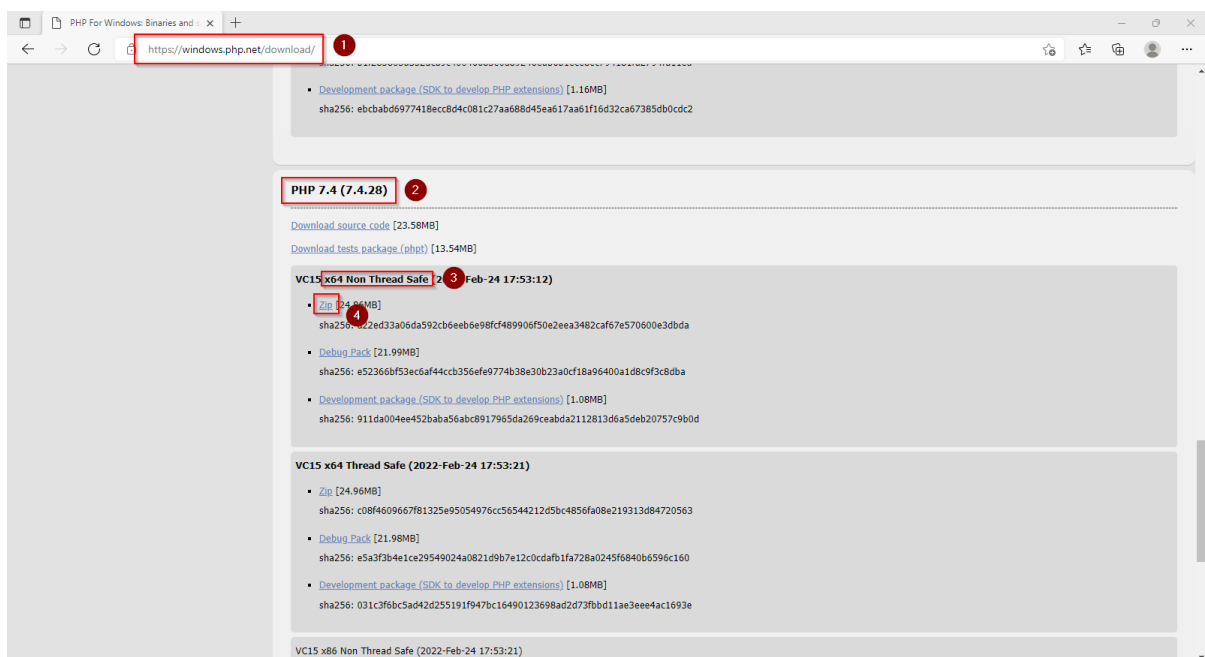
Download



The content of this section refers to external sources and is current at the time of writing this documentation. We cannot guarantee how long these sources will remain unchanged. Please let us know if you notice any discrepancies to the information provided here.

Open the [official download page for Windows](https://windows.php.net/download/) auf [php.net](https://windows.php.net/download/) (1).

Find the currently most recent version 7.4.x (2) 64-bit Non Thread Safe (3) and **download** it (4):



Follow the download instructions.



Please note that BlueSpice is not compatible with PHP 8.x at this time.



In the following steps, we use PHP-Version 7.4.28 which only serves as an example for the latest version 7.4.x that is available at the time of your download.

Unpacking the ZIP archive

Unpack the ZIP archive that you just downloaded into a useful system path on your hard drive.



This documentation assumes the [recommended folder structure](#).

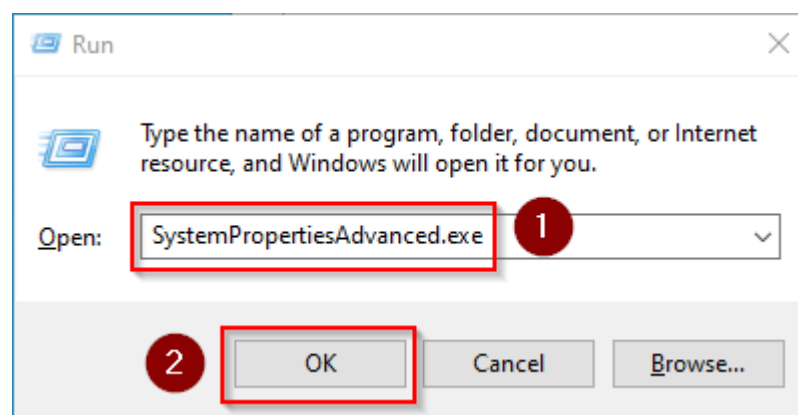
For this reason PHP will be unpacked into the folder C:\bluespice\bin\php-7.4.28. If you have a different folder structure, you must adapt these paths accordingly.

Setting the environment variable

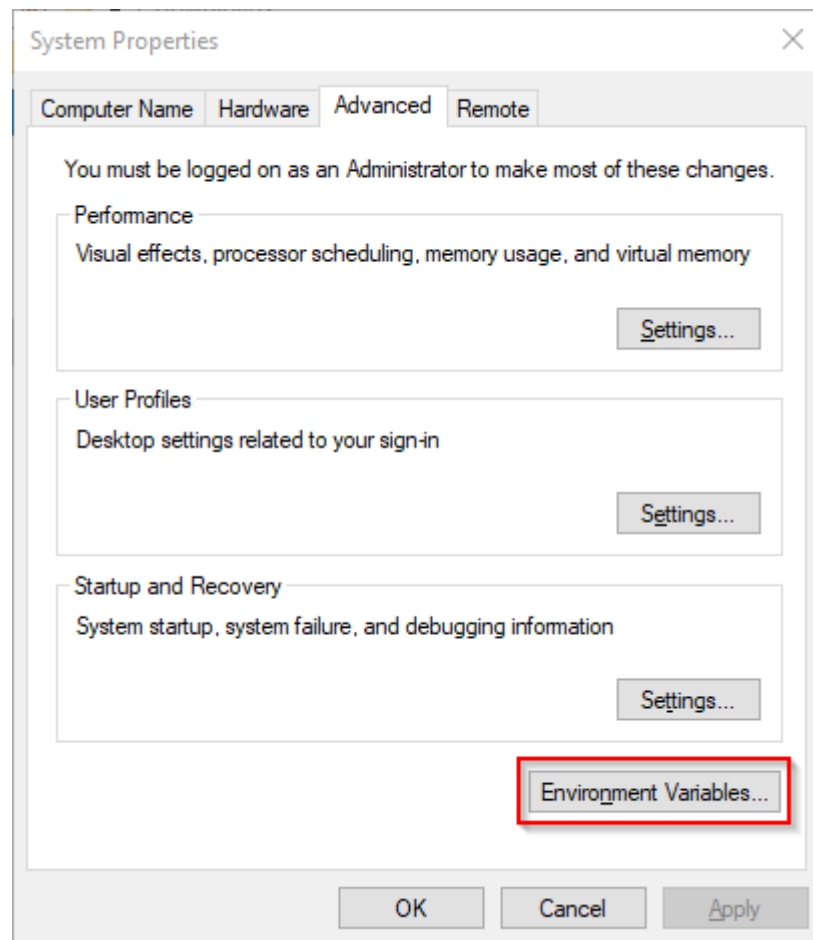
To use PHP easily on the command line of Windows, it is necessary to configure an environment variable in Windows. Perform the following steps:

Enter the key combination Windows+R.

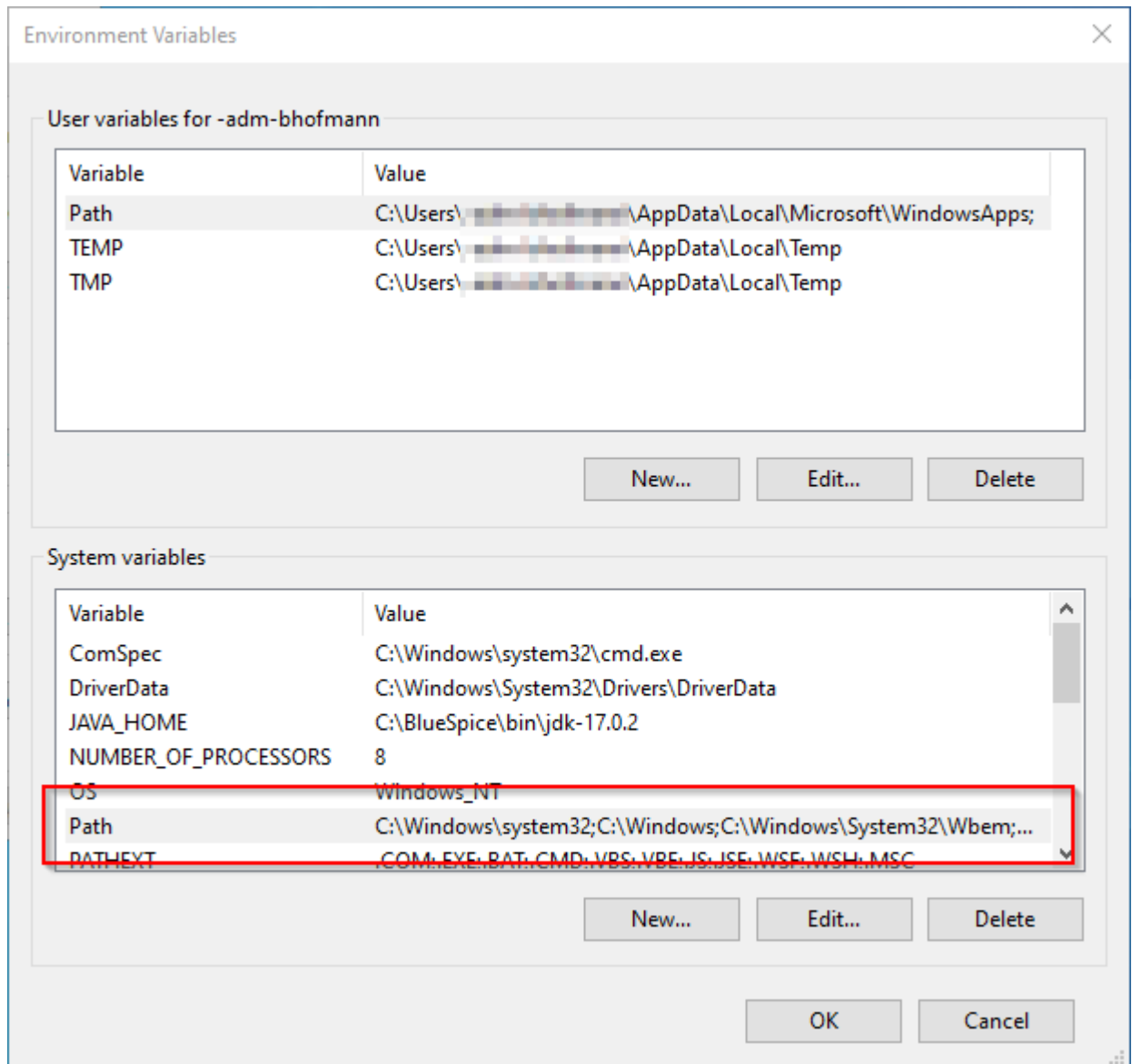
Enter "SystemPropertiesAdvanced.exe" (1) in the dialog window and **click** "OK" (2):



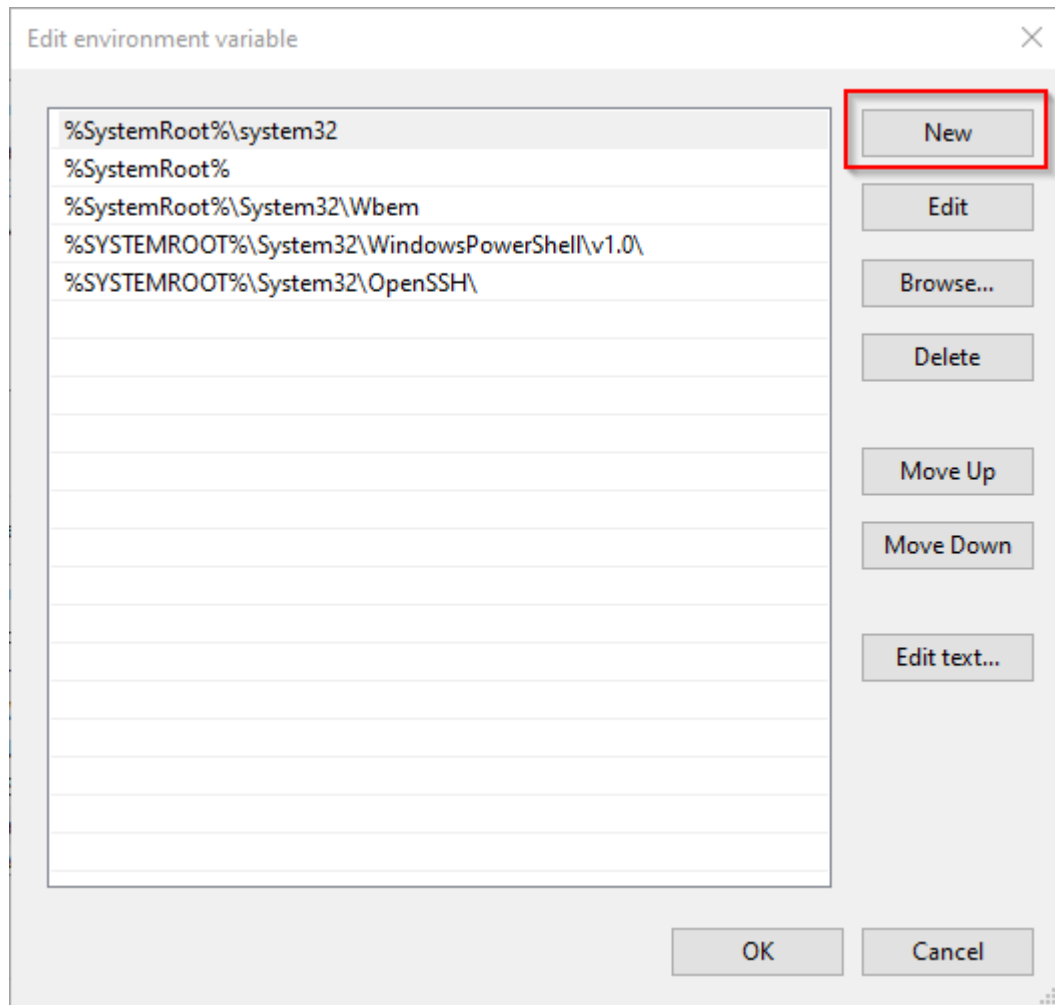
Click "Environment Variables...":



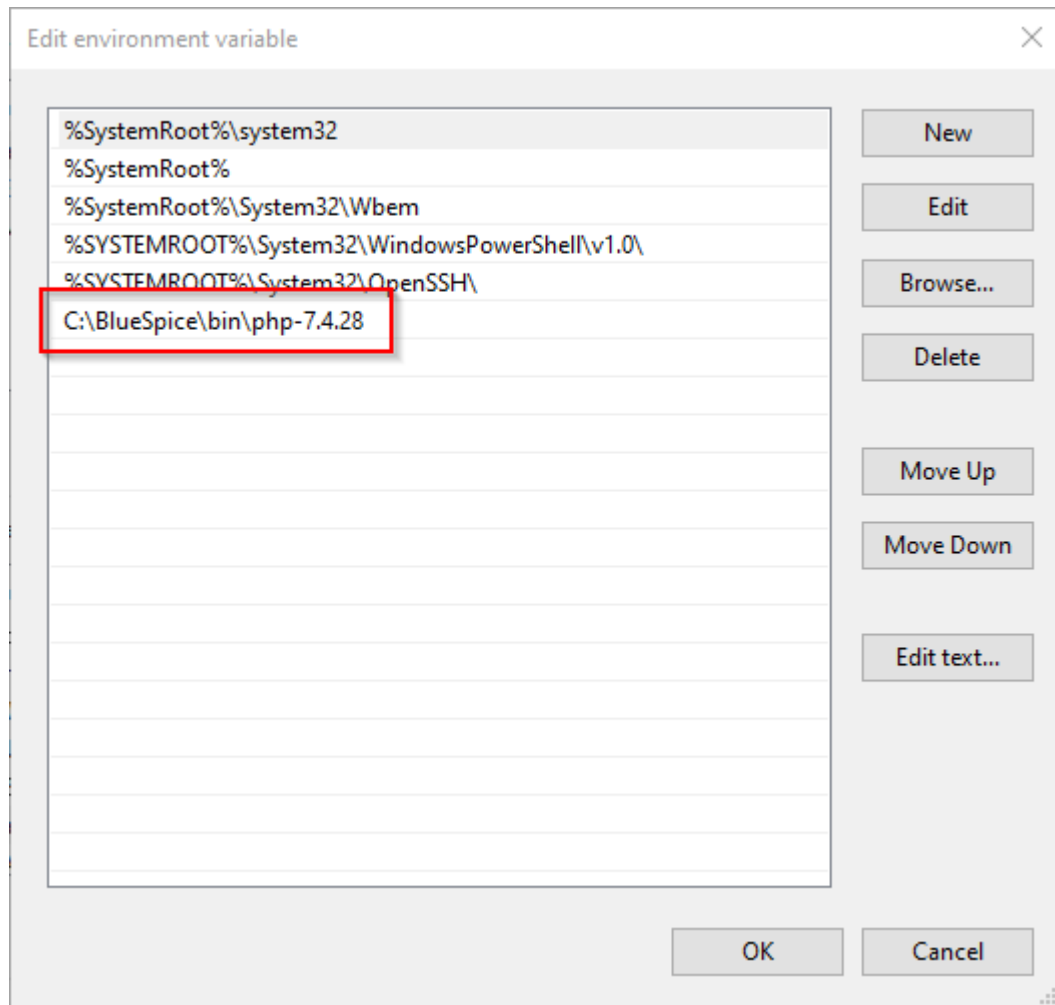
Double-click the entry "Path" in the section "System variables":



Click "New":



Add the path to your unpacked PHP version, which contains the php.exe file:



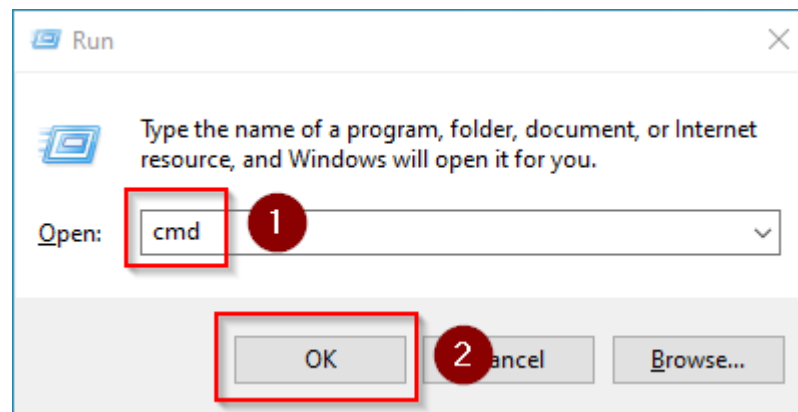
Close all newly opened windows one after the other by clicking "OK".

Checking the environment variable

To make sure the environment variable is set correctly, perform the following steps:

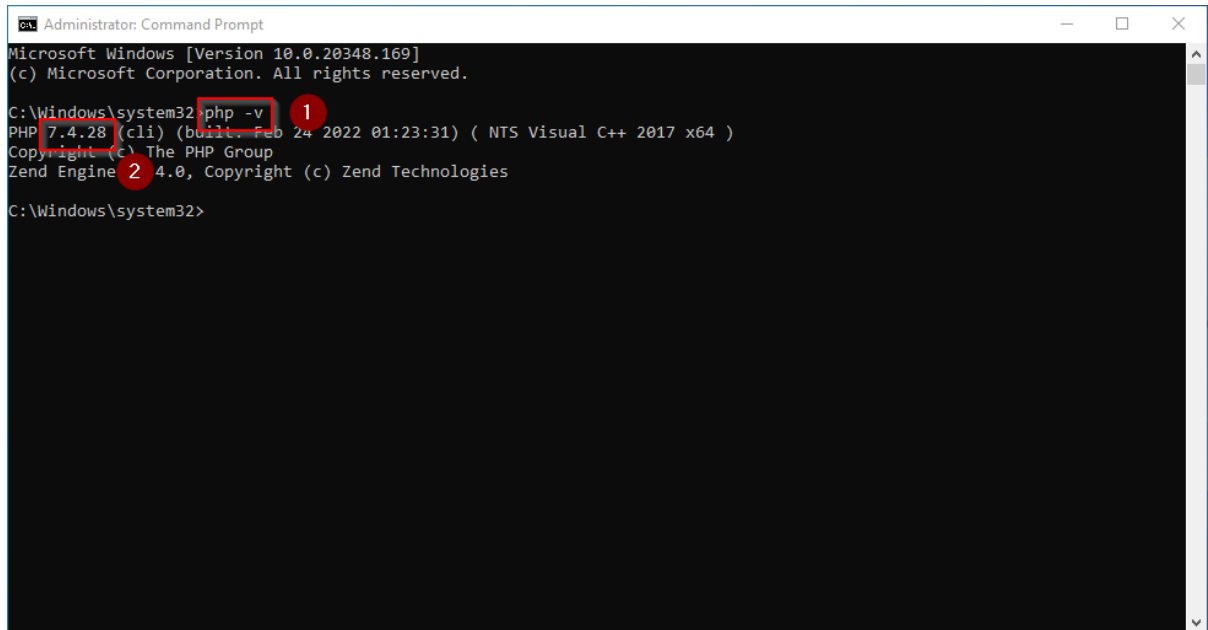
Enter the key combination Windows+R.

Enter "cmd" (1) in the dialog window and **click** "OK" (2):



The command prompt opens.

Type "php -v" (1) and **press** the *Enter* key. The found PHP version will be displayed (2).



```
Administrator: Command Prompt
Microsoft Windows [Version 10.0.20348.169]
(c) Microsoft Corporation. All rights reserved.

C:\Windows\system32 php -v 1
PHP 7.4.28 (cli) (built: Feb 24 2022 01:23:31) ( NTS Visual C++ 2017 x64 )
Copyright (c) The PHP Group
Zend Engine 2 4.0, Copyright (c) Zend Technologies

C:\Windows\system32>
```

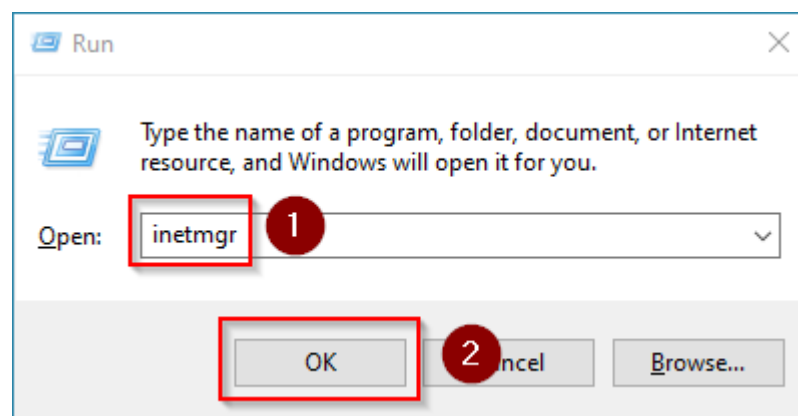
If this is not the case, then the path to the php.exe file in the environment variables was specified incorrectly.

Configuring IIS for PHP

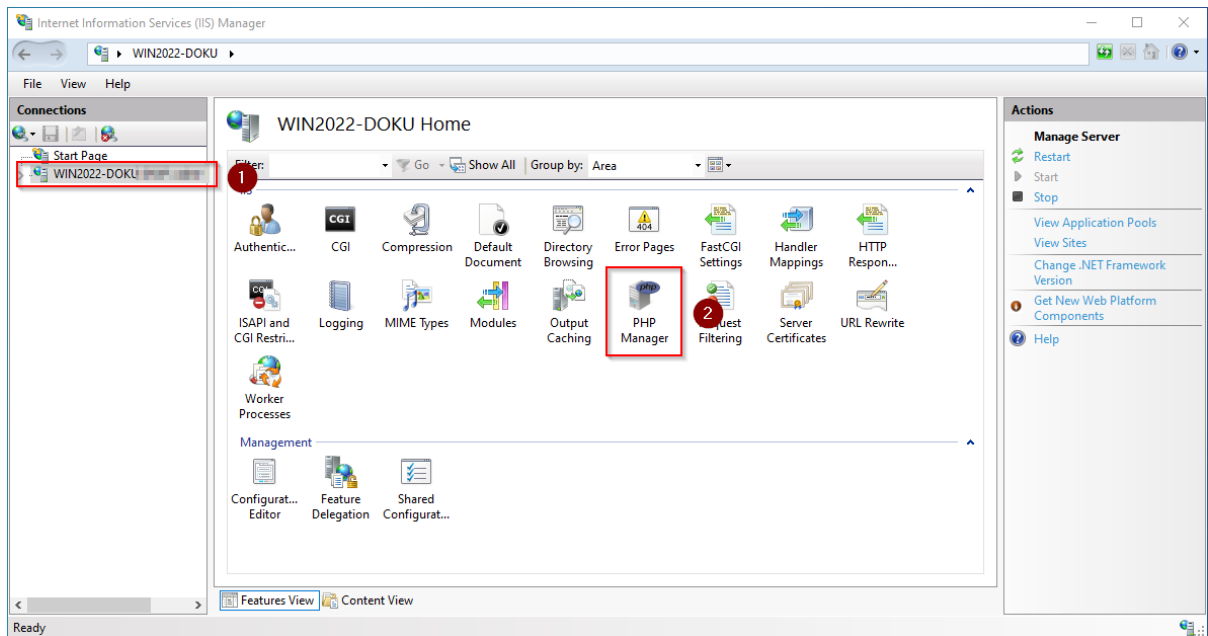
In the following steps, PHP will be included in IIS and IIS will be configured to provide a working basic setup:

Press the key combination Windows+R to call up IIS Manager.

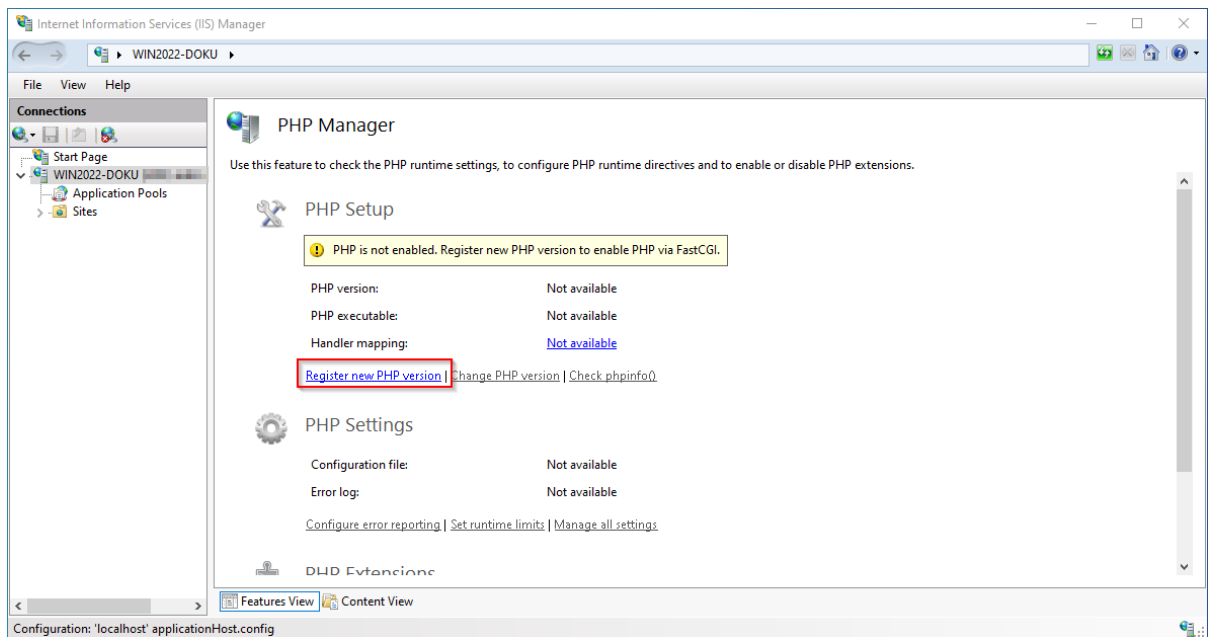
Enter "inetmgr" (1) in the dialog window and **click** "OK" (2):



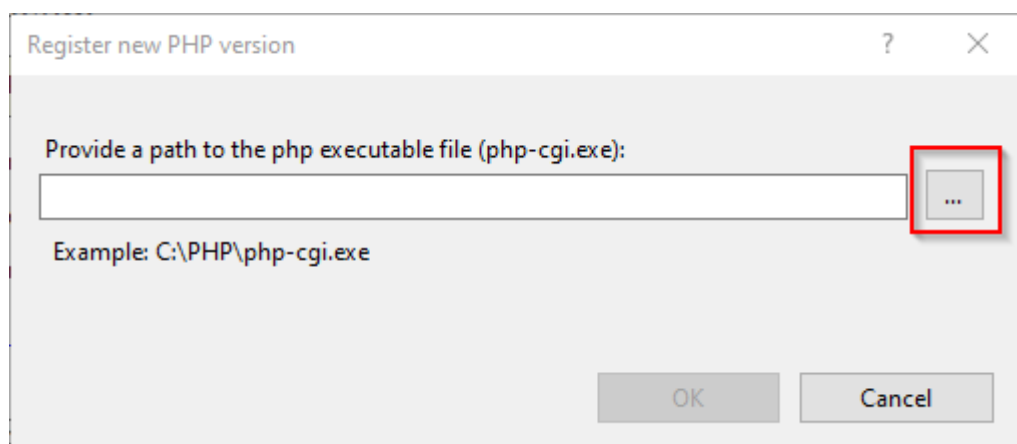
Select your server name (1) in the left pane and then **double-click** "PHP Manager" (2):



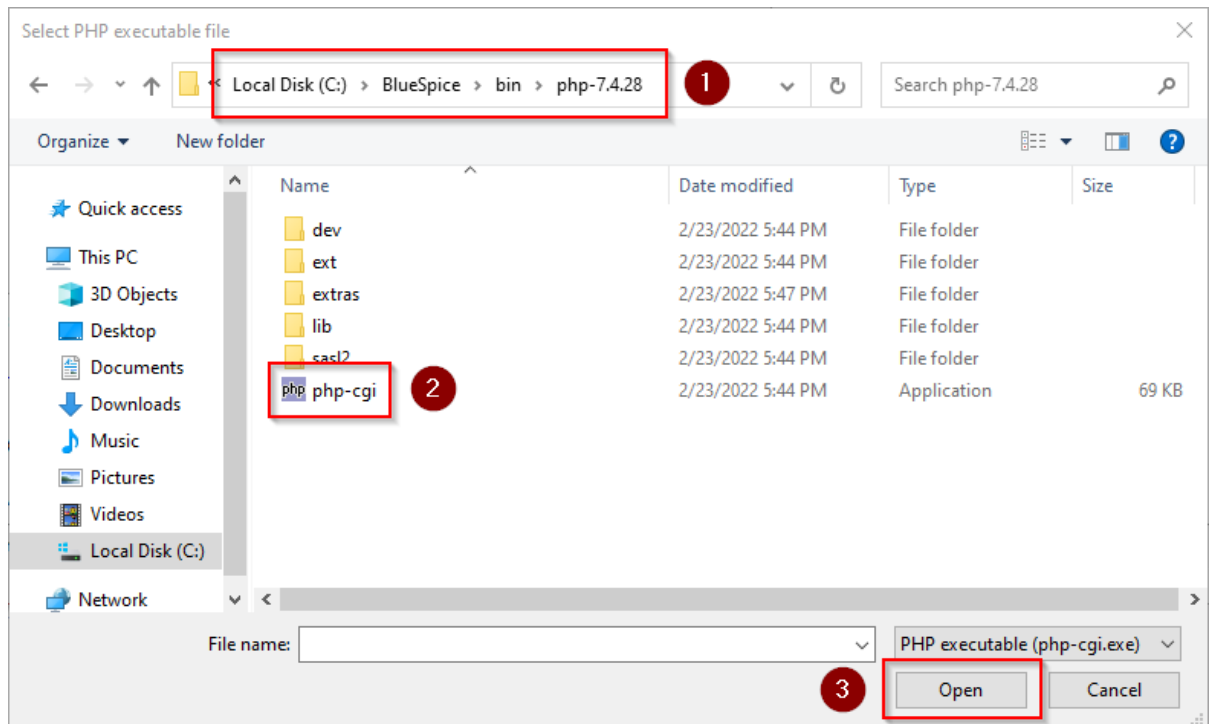
Click "Register new PHP version":



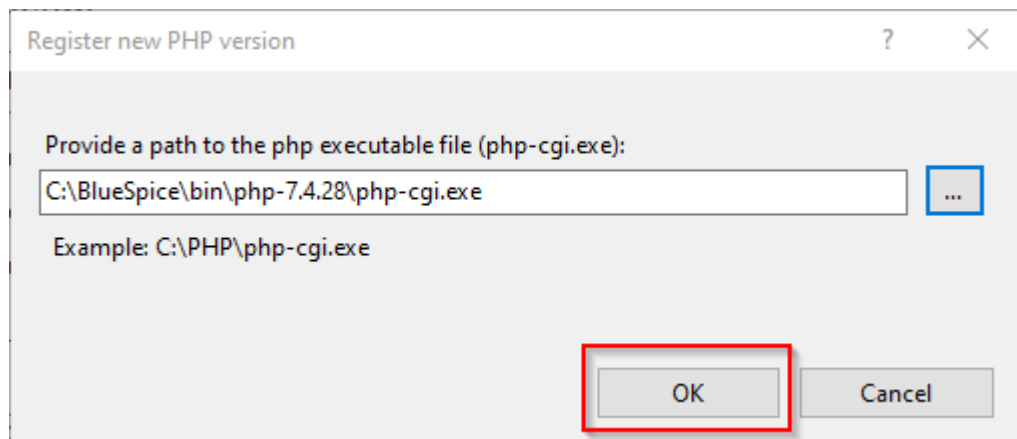
Select the browse "(...)" button in the next window:



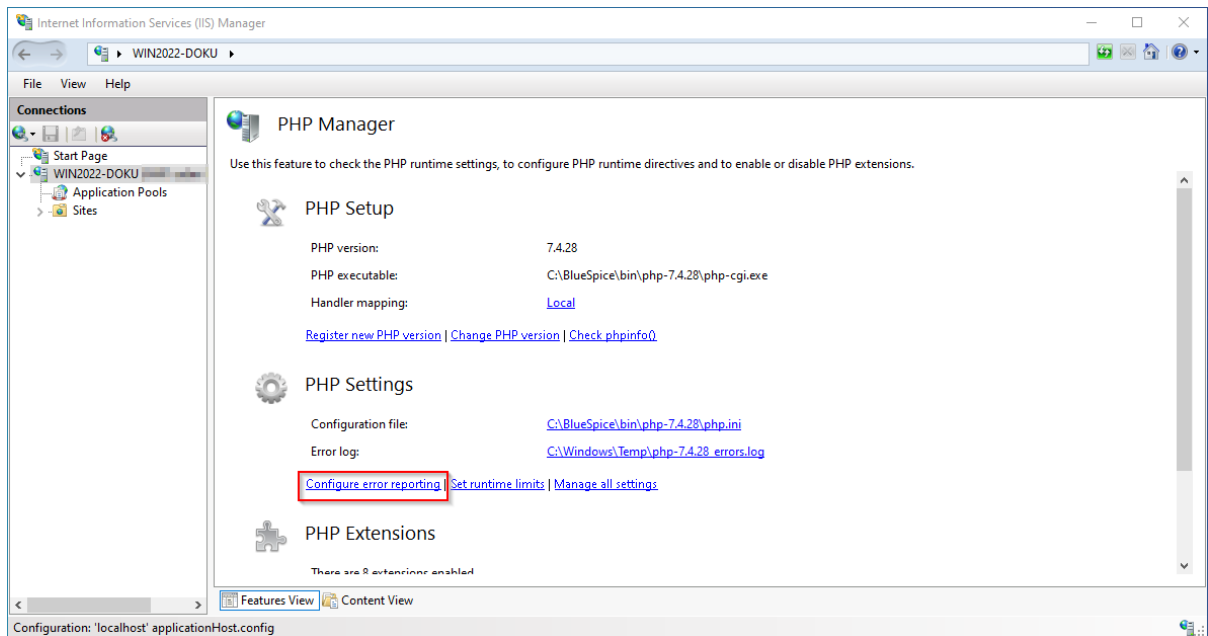
Change to the path to which you previously unzipped PHP (1), **mark** the "php-cgi.exe" (2) and **click** "Open" (3):



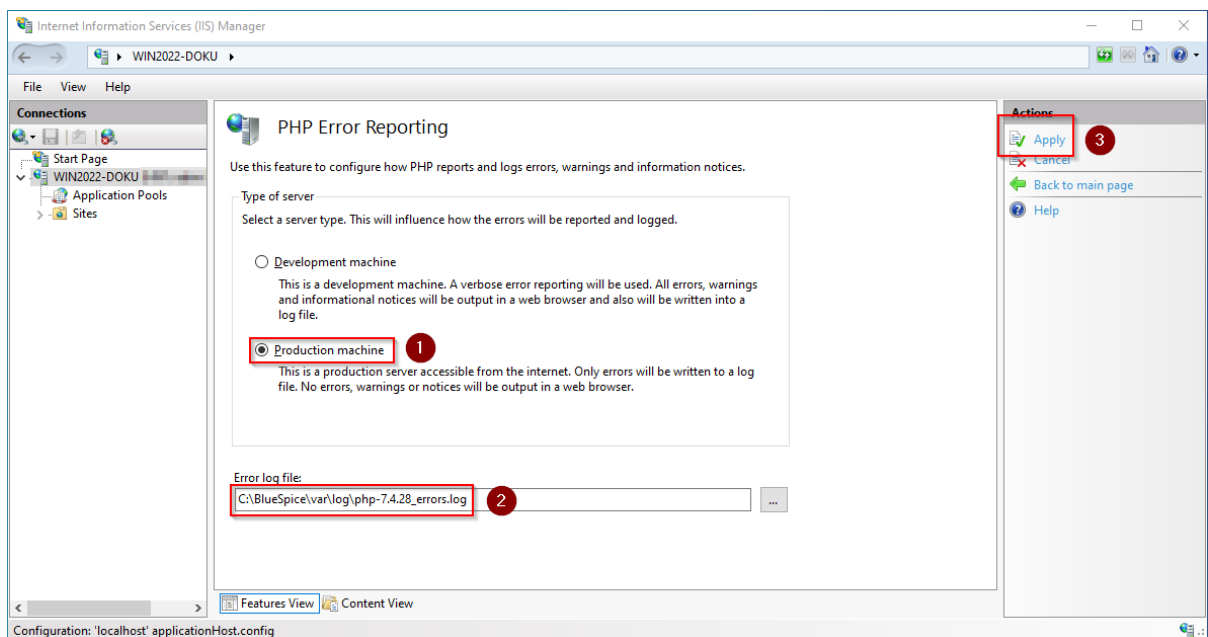
Click "OK":



Click "Configure error reporting":

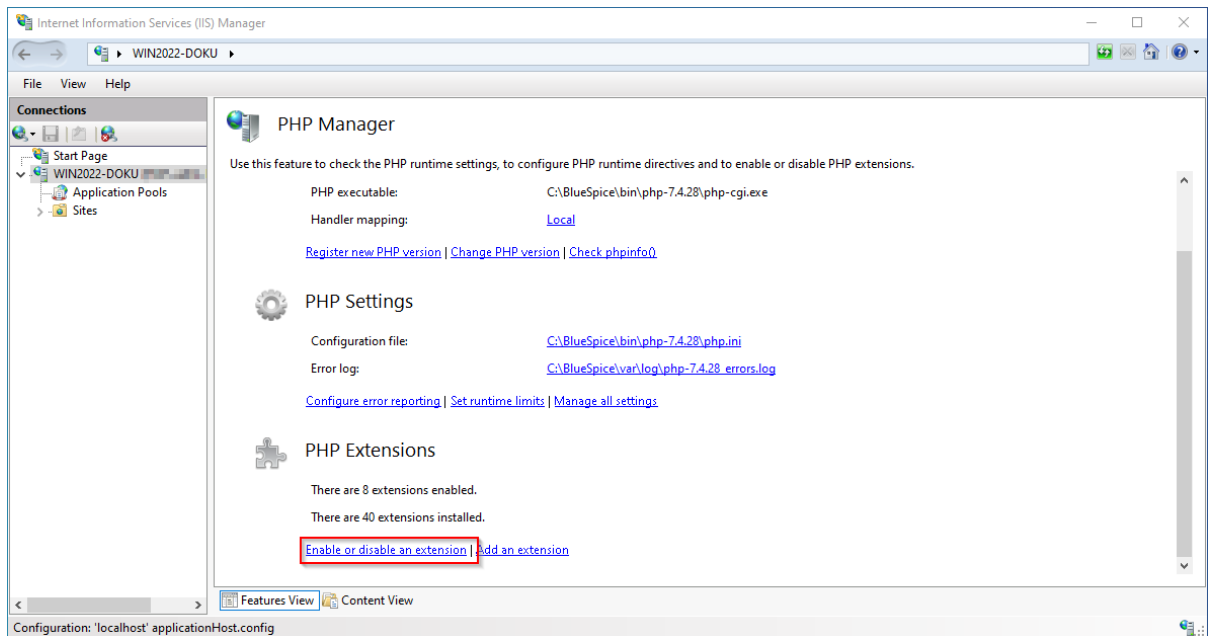


Select the item "Production machine" (1) and **enter** a path and a file of your choice where PHP should save its log (2). **Click** "Apply" (3):

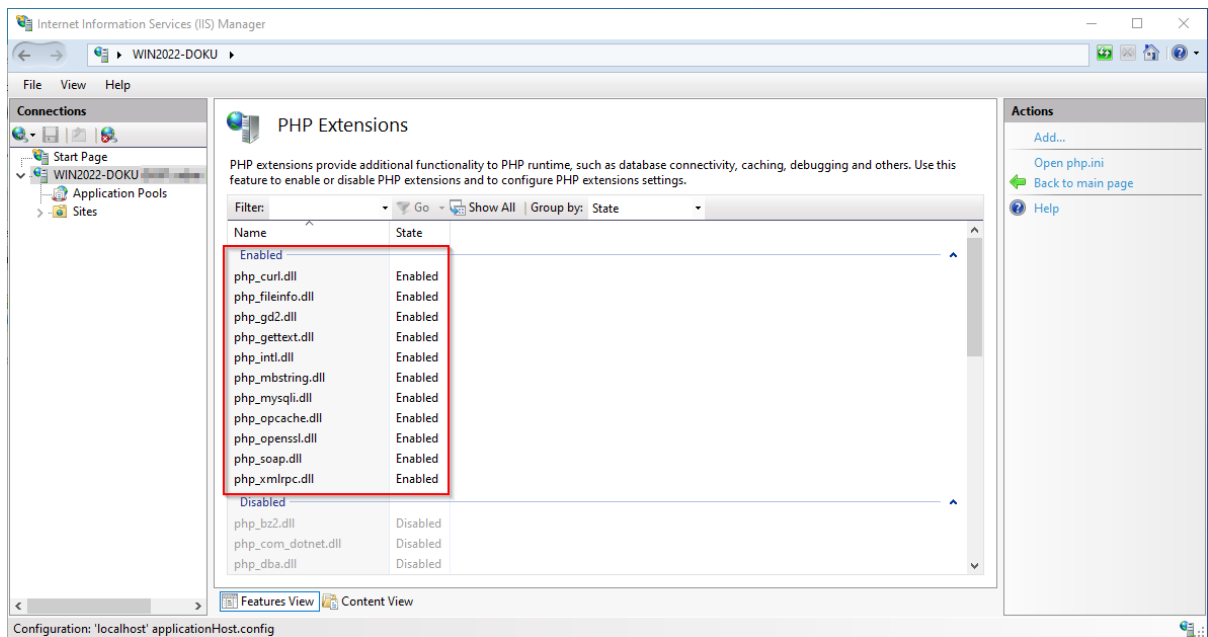


This documentation assumes the recommended folder structure. If the path you specify here does not yet exist, please create it before clicking "Apply".

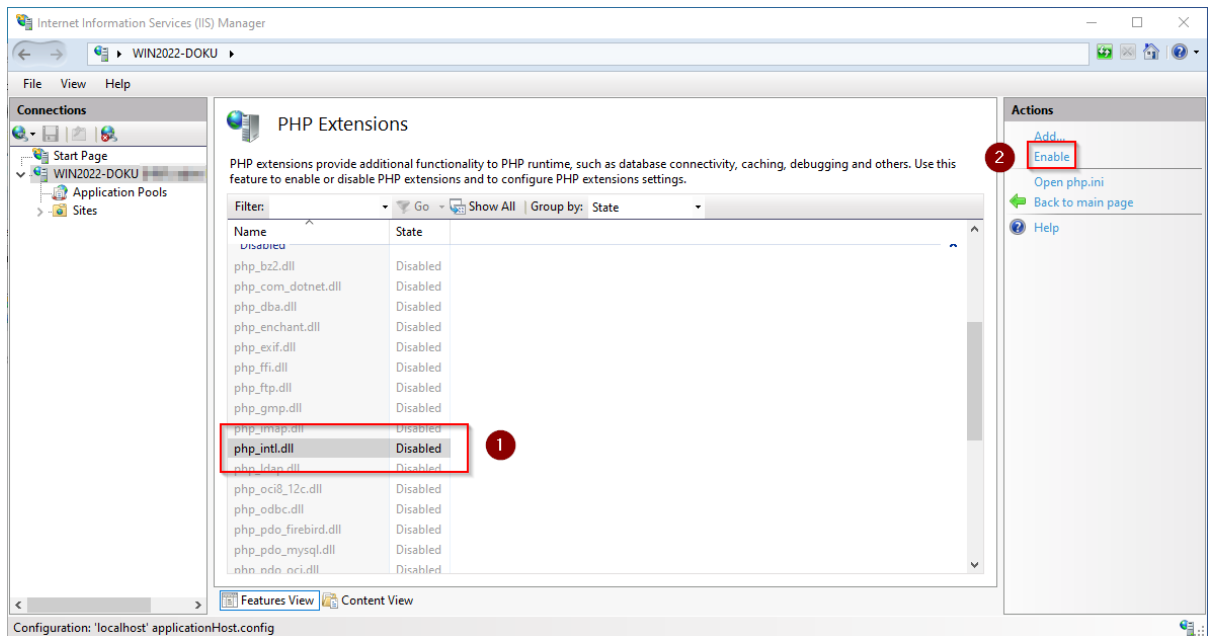
Click "Enable or disable an extension" in the main window:



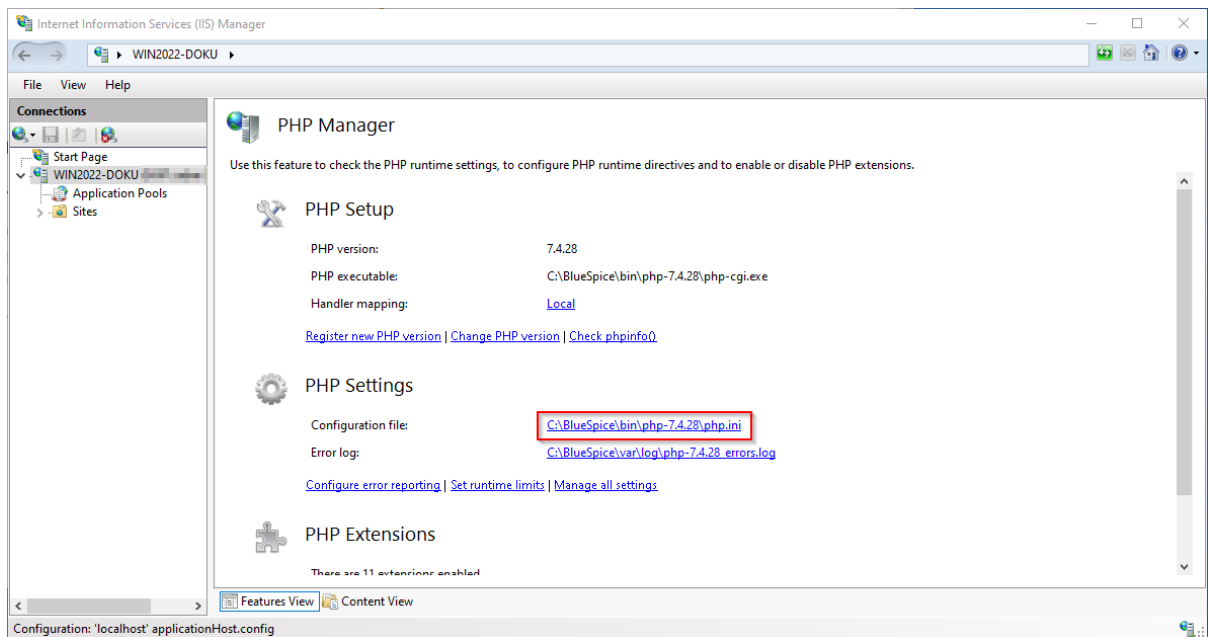
Make sure that the following extensions are activated:



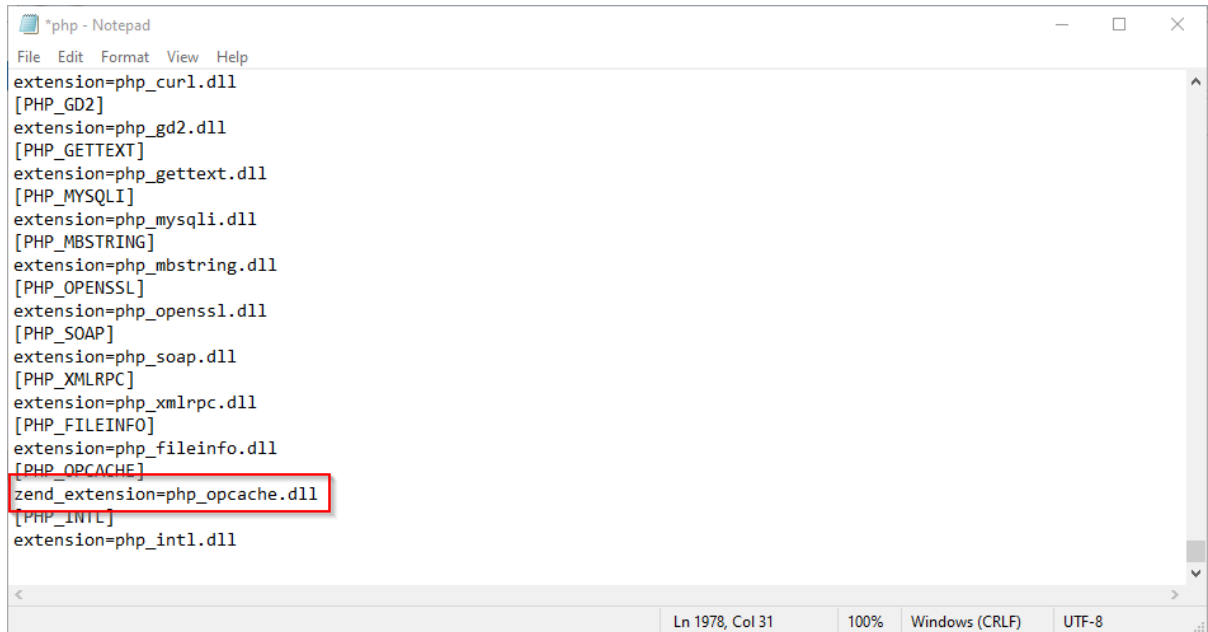
To activate an extension, find it in the "Disabled" extensions (1) and **click** "Enable" (2):



Open the configuration file *php.ini*:



Replace the line `extension=php_opcache.dll` with `zend_extension=php_opcache.dll`:



```
*php - Notepad
File Edit Format View Help
extension=php_curl.dll
[PHP_GD2]
extension=php_gd2.dll
[PHP_GETTEXT]
extension=php_gettext.dll
[PHP_MYSQLI]
extension=php_mysqli.dll
[PHP_MBSTRING]
extension=php_mbstring.dll
[PHP_OPENSSL]
extension=php_openssl.dll
[PHP_SOAP]
extension=php_soap.dll
[PHP_XMLRPC]
extension=php_xmlrpc.dll
[PHP_FILEINFO]
extension=php_fileinfo.dll
[PHP_OPCACHE]
zend_extension=php_opcache.dll
[PHP_INTL]
extension=php_intl.dll

Ln 1978, Col 31 100% Windows (CRLF) UTF-8
```

Change the following options to the values below:

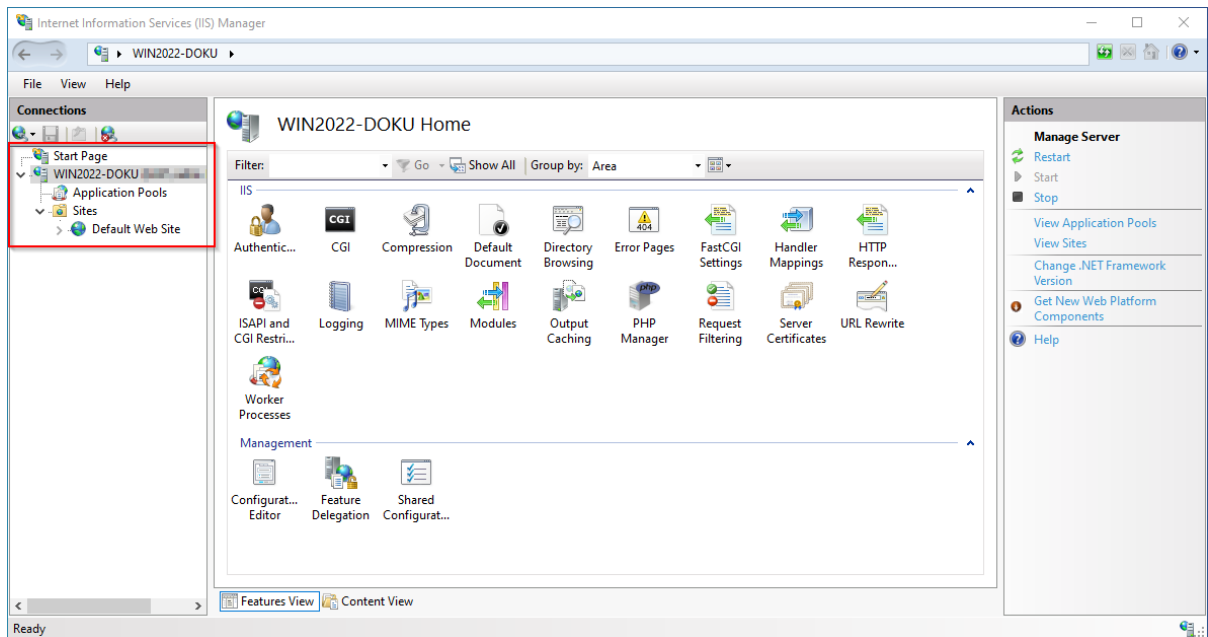
Name	Wert	Kommentar
date.timezone	"Europe/Berlin"	Select the appropriate time zone for you. Uncomment the entry
max_execution_time	600	
post_max_size	1024M	
upload_max_filesize	1024M	
opcache.enable	1	Uncomment the entry
opcache.enable_cli	0	Uncomment the entry
opcache. memory_consumption	512	Uncomment the entry
opcache. max_accelerated_files	1000000	Uncomment the entry
opcache.validate_timestamps	1	Uncomment the entry
opcache.revalidate_freq	2	Uncomment the entry
opcache.optimization_level	0x7FFF9FFF	Uncomment the entry
opcache.blacklist_filename	C:\bluespice\etc\opcache. blacklist	Uncomment the entry
zlib.output_compression	On	
zlib. output_compression_level	9	Uncomment the entry

Save and close the file.

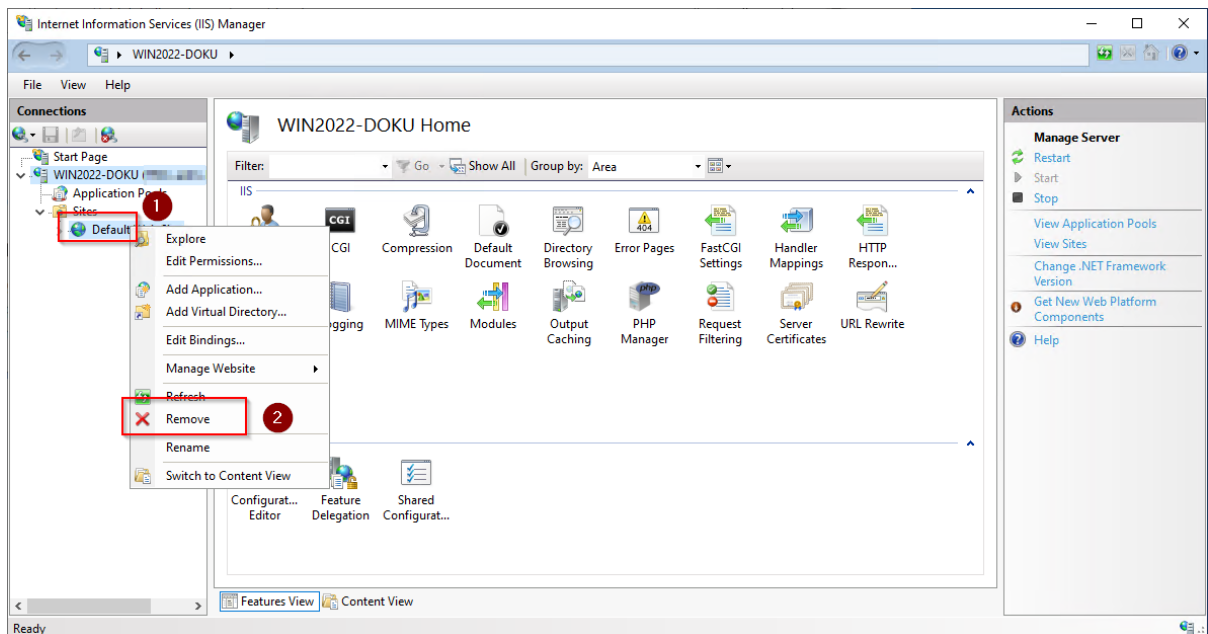
Create the folder `C:\bluespice\etc`.

Create a text file named `opcache.blacklist` content `C:\bluespice\var\www\w\extensions\BlueSpiceFoundation\config*`

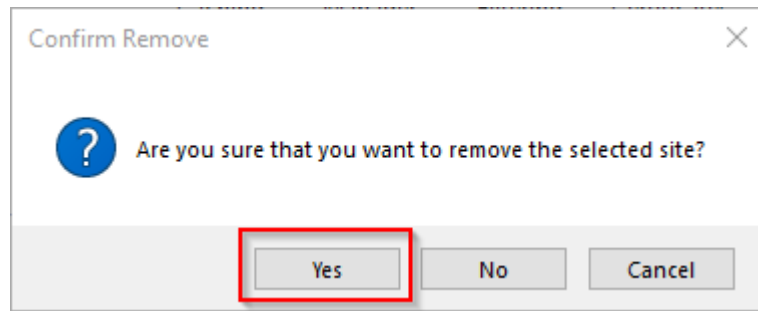
Expand the tree in the left pane of the IIS Manager until the "Default Web Site" becomes visible:



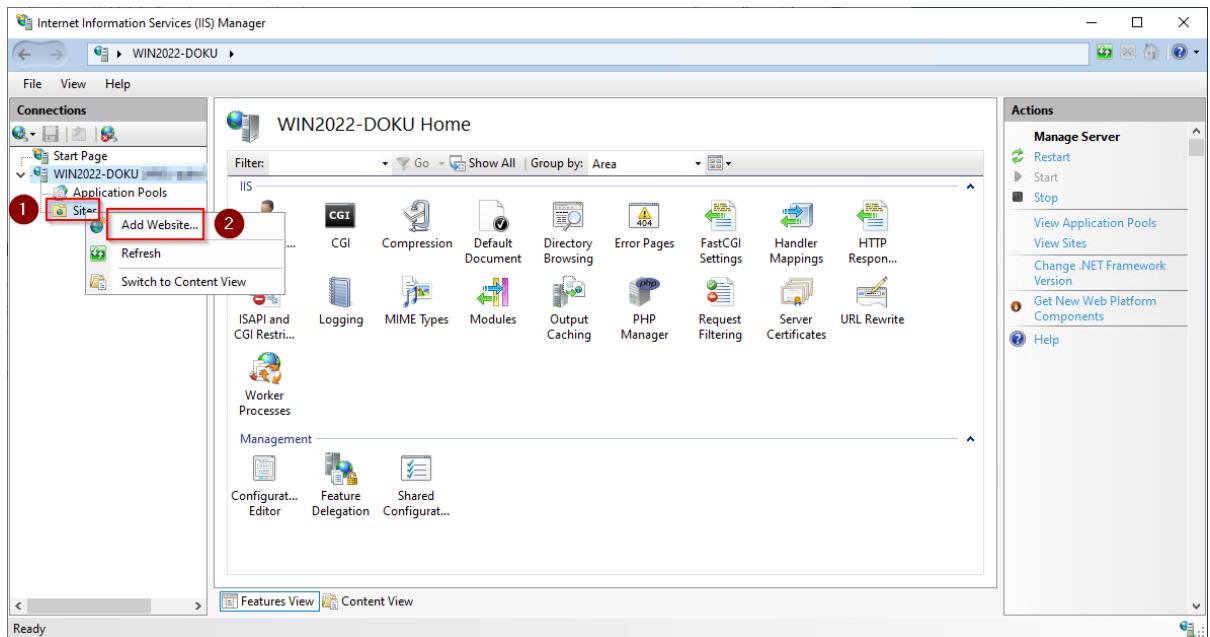
Right-click (1) and then **click** "Remove" (2):



Confirm the following dialog with "Yes":



Right-click "Sites" (1) and click "Add Website" (2):



Enter the site name "BlueSpice" (1) and **select** the path on your server where your BlueSpice installation will be located later (2).

Click "OK" (3):

Add Website

Site name: Application pool:

Content Directory

Physical path:

Pass-through authentication

Binding

Type: IP address: Port:

Host name:

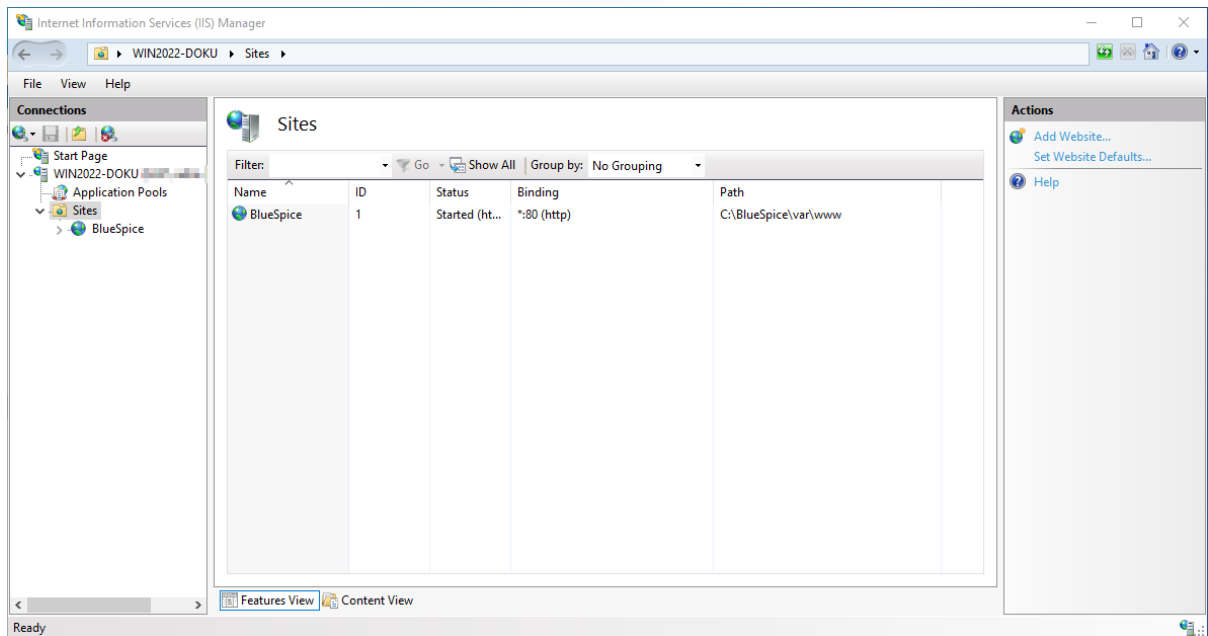
Example: www.contoso.com or marketing.contoso.com

☒ Start Website immediately



This documentation assumes the [recommended folder structure](#). If the path you specify here does not yet exist, please create it before clicking "OK".

The site is now listed in the IIS overview page:



Next step

If you have successfully completed all of the above steps, proceed to the next step: [MariaDB](#).