

Contents

--

MariaDB on Windows

Contents

1	Download	3
2	Installation	4
3	Setting the environment variable	7
4	Next step	11



BlueSpice stores your content in a database for which you need to install a corresponding server. The steps listed here are required.



Alternatively, you can also use MySQL at this point, but we recommend the MariaDB database server described as below.

Download



The content of this section refers to external sources and is current at the time of writing this documentation. We cannot guarantee how long these sources will remain unchanged. Please let us know if you notice any discrepancies to the information provided here.

Open the [official download page](#) (1) in your browser. If not everything is already filled out correctly, select the latest version of MariaDB (1), the Windows operating system (2), the architecture x86_64 (3) and the MSI package (4).

Click on "Download" (5) and follow the further download instructions.

The screenshot shows the MariaDB Server download page. The page has a navigation bar with links: Download, Documentation, Contribute, Server Fest, Events, Sponsor, Blog, Planet MariaDB, and About. Below the navigation bar, there is a search bar and a 'Subscribe' button. The main content area is titled 'MariaDB Server' and includes a 'Download MariaDB Server' section with links to REST API, Release Schedule, Reporting Bugs, and View all releases for: MariaDB Server, MariaDB Galera, Connector/C, Connector/J, Connector/ODBC, Connector/Python, and Connector/Node.js. The download form includes the following fields:

- MariaDB Server Version:** A dropdown menu showing 'MariaDB Server 10.7.3' (annotated with 1).
- Operating System:** A dropdown menu showing 'Windows' (annotated with 2).
- Architecture:** A dropdown menu showing 'x86_64' (annotated with 3).
- Package Type:** A dropdown menu showing 'MSI Package' (annotated with 4).
- Download:** A blue button (annotated with 5).
- Mirror:** A dropdown menu showing 'Download from the official mirror'.

Below the form, there is a section for 'Release date: 2022-02-13' and 'File name: mariaDB-10.7.3-winx64.msi'.

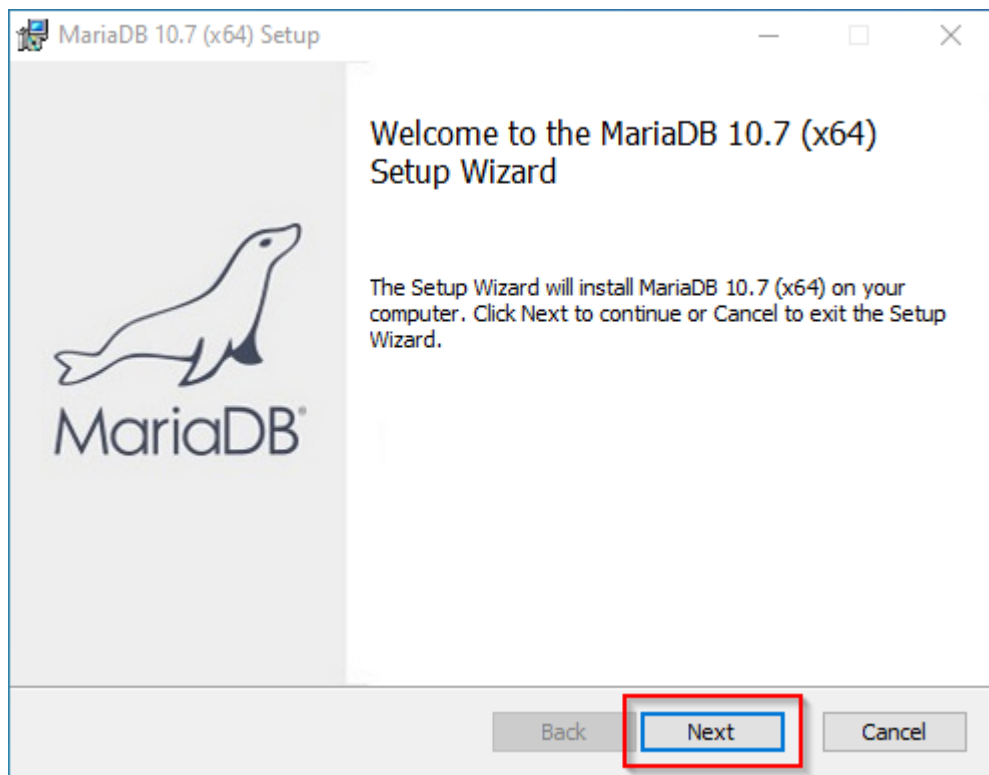


Im Folgenden wird die MariaDB-Version 10.7.3 verwendet und dient nur beispielhaft für die aktuellste Version 10.7.x, die Sie zum Zeitpunkt Ihrer Installation herunterladen können.

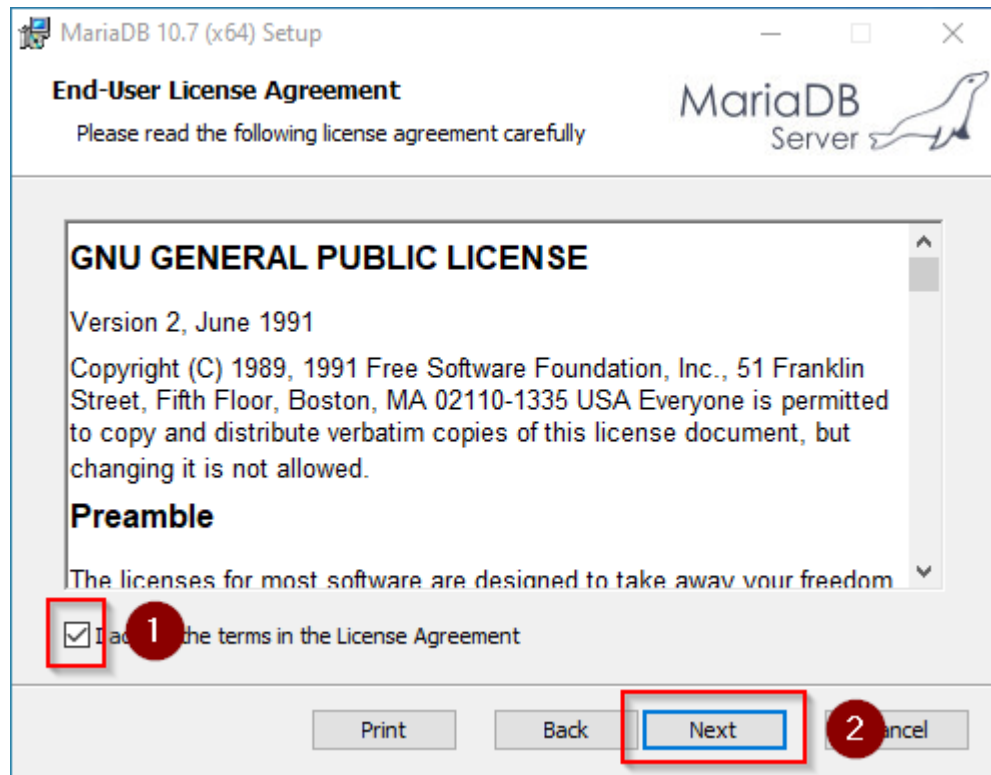
Installation

Open the MSI file that you have just downloaded.

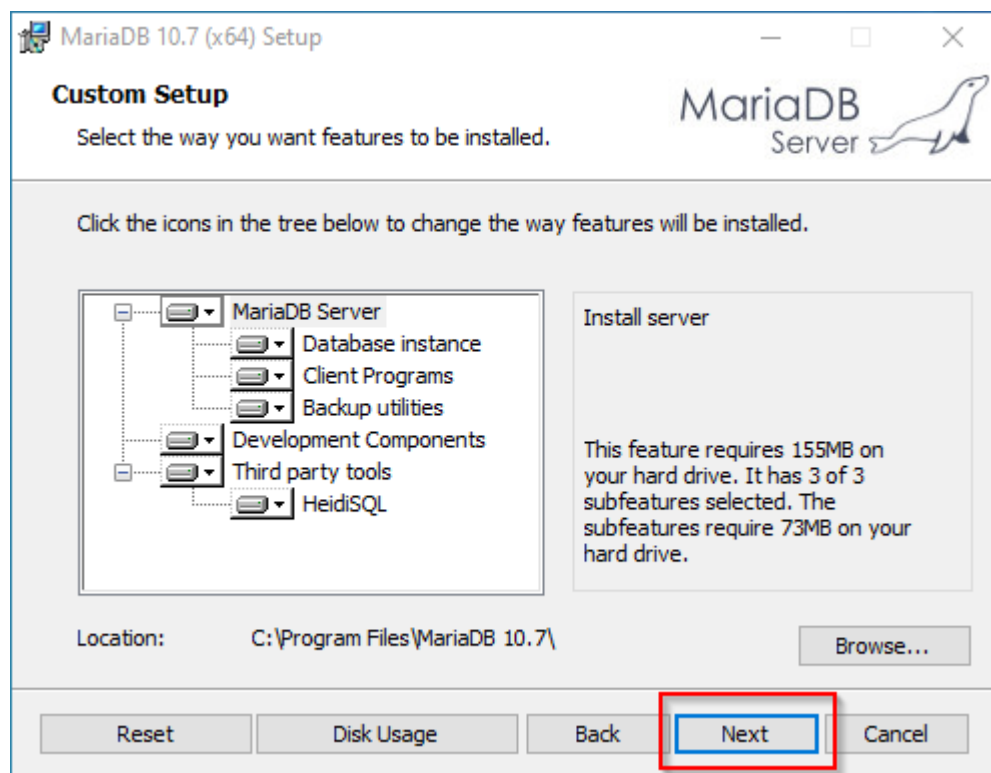
Click "Next" to start the installation:



Confirm the dieLicense Agreement (1) and **click** "Next" (2):



Click "Next" to confirm the installation setup:



Enter a new root password for the administrative ("root") user of the database server (1) and **click** "Next" (2):

User settings

Default instance properties
MariaDB 10.7 (x64) database configuration

☒ **Modify password for database user 'root'**

New root password: Enter new root password

Confirm: Repeat the password

☐ **Enable access from remote machines for 'root' user**

☐ **Use UTF8 as default server's character set**

Data directory

Click "Next" in the *Default instance properties* window:

Database settings

Default instance properties
MariaDB 10.7 (x64) database configuration

☒ **Install as service**

Service Name:

☒ **Enable networking**

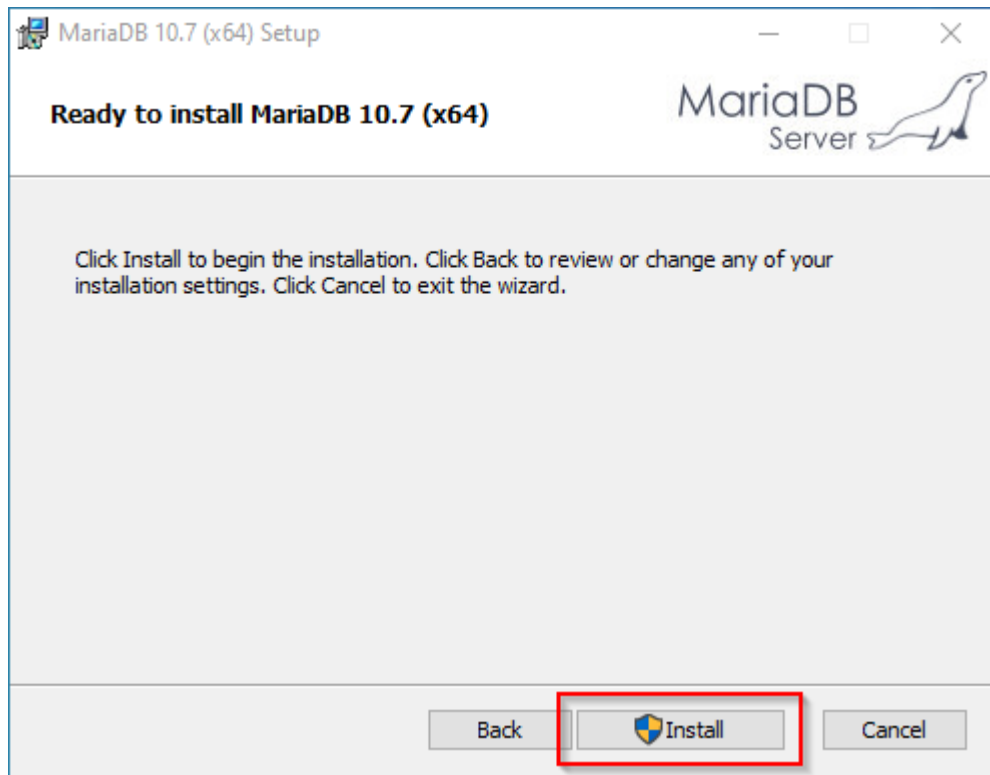
TCP port:

Innodb engine settings

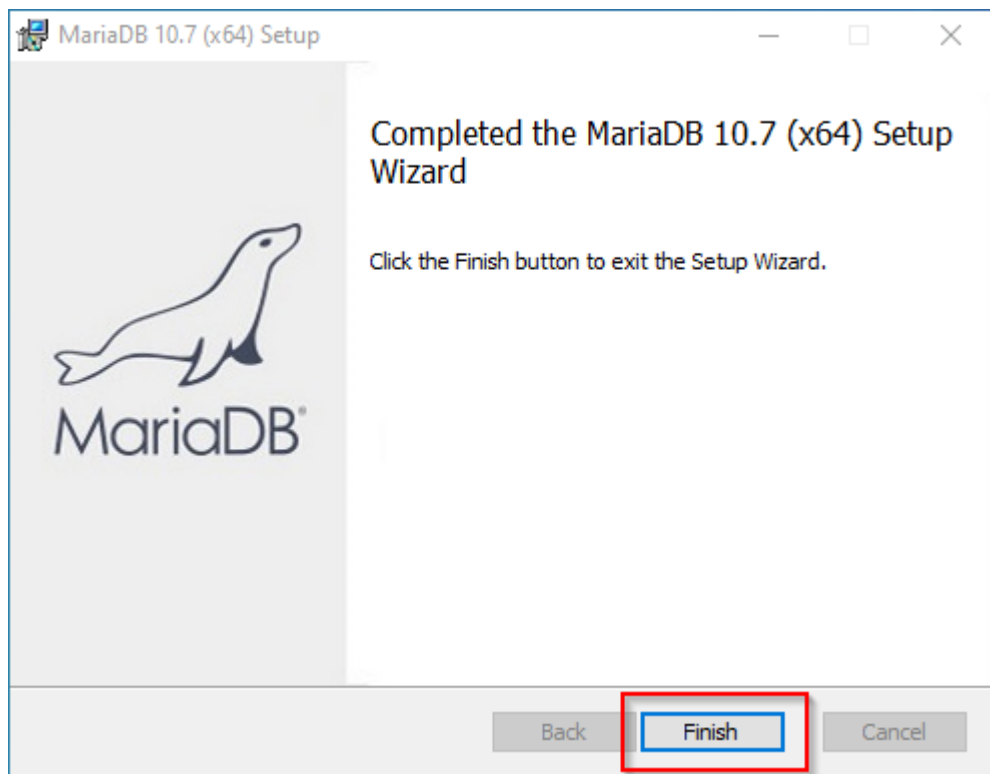
Buffer pool size: MB

Page size: KB

Click "Install" to start the installation:



Click "Finish" after the installation to exit the setup:

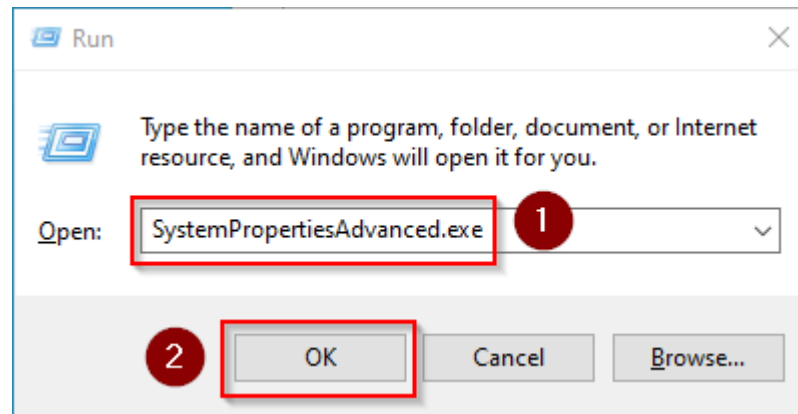


Setting the environment variable

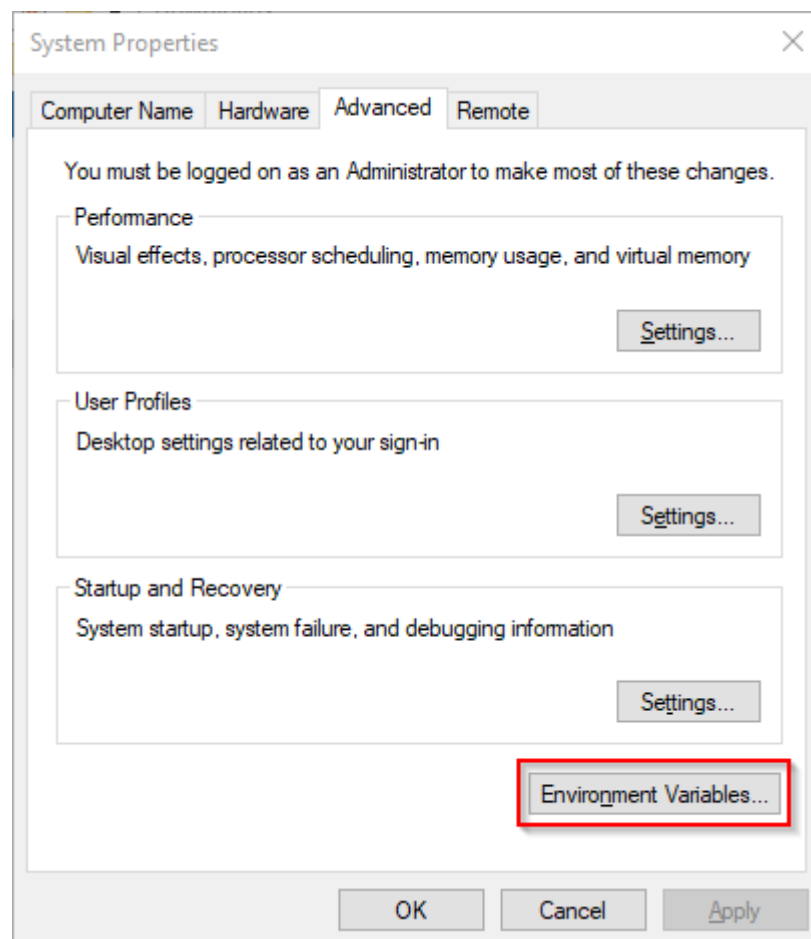
To be able to use MariaDB on the Windows command line without any problems, it is necessary to configure an environment variable in Windows. To do this, follow these steps:

Enter the key combination Windows+R.

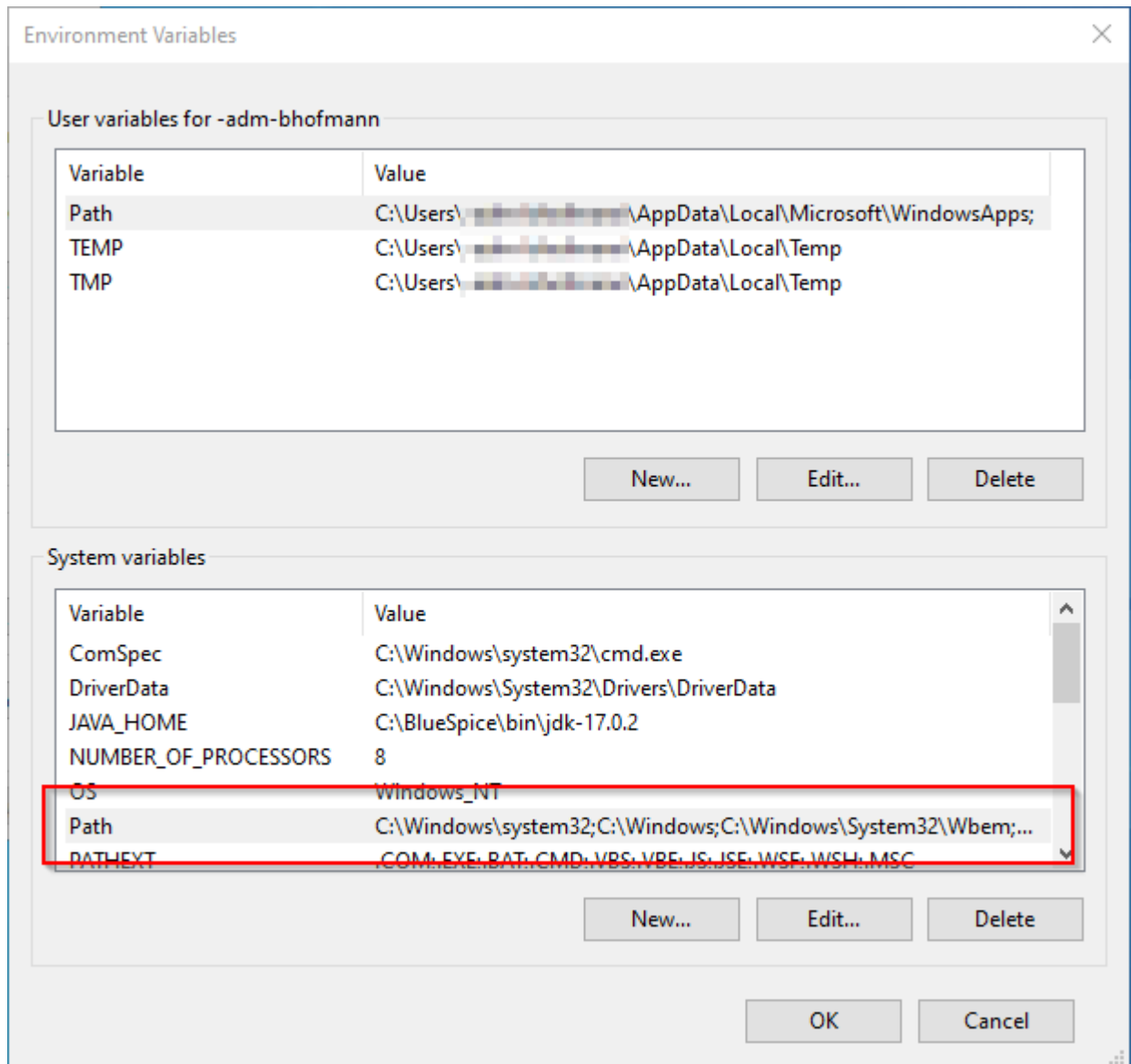
Enter "SystemPropertiesAdvanced.exe" (1) in the dialog window and **click** "OK" (2):



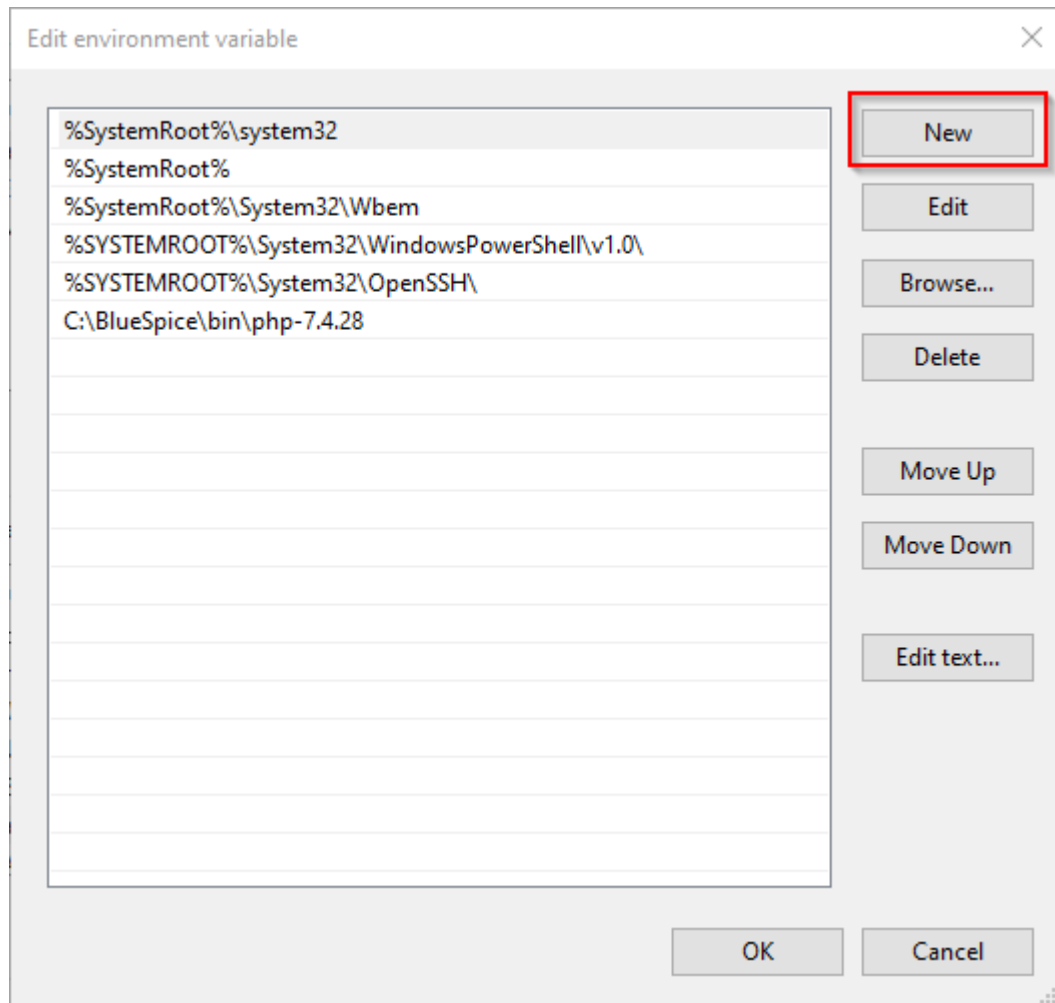
Click "Environment Variables...":



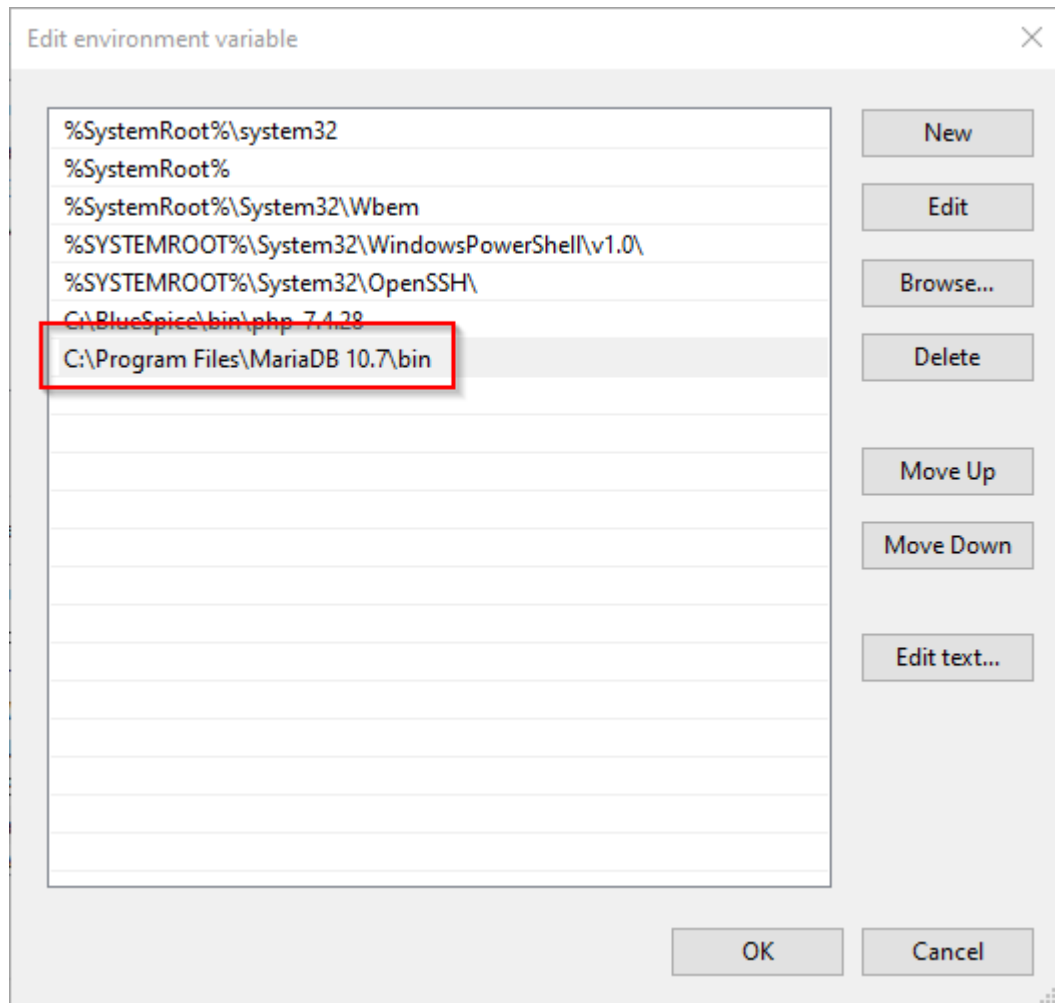
Double-click the entry "Path" in the section "System variables":



Click "New":



Add the path to your MariaDB installation, which includes among others the file *mysql.exe*. By default, this is the path `C:\Program Files\MariaDB 10.7\bin`



Close all newly opened windows one after the other by clicking "OK".

Next step

If you have successfully completed all of the above steps, proceed to the next step: [OpenJDK](#)