

Contents

1. Setup:Installation Guide/Security Settings	2
2. Setup:Installation Guide/Security Settings/File System Permissions	2
3. Setup:Installation Manual/Security Settings/Deactivating installcheck file	5
4. Setup:Installation Manual/Security Settings/Save Directories	7

Installation Guide/Security Settings

- [File System Permissions](#)
- [Deactivating installcheck file](#)
- [Save Directories](#)

File System Permissions

Contents

1 Tips for this Document	3
2 Affected Folders	3
3 Assignment of Permissions with Windows	3
4 Assignment of Permissions with Linux	4

For trouble-free usage of your BlueSpice installation, the web server requires write permissions to several folders of the file system. However, it is recommended to keep the rights for all other files and folders to a minimum. This document shows you the relevant folders and the correct permissions setting.

Tips for this Document

- Please, read this manual completely and work through the single installation steps one after another.
- For editing the configuration files with a text editor, the files must be saved in UTF-8 coding without BOM (Byte Order Mark).
- The placeholder `<installpath-bluespice>` stands for the path to your BlueSpice installation, e.g. `C:\inetpub\wwwroot\bluespice` (Windows) or `/var/www/bluespice` (Linux).

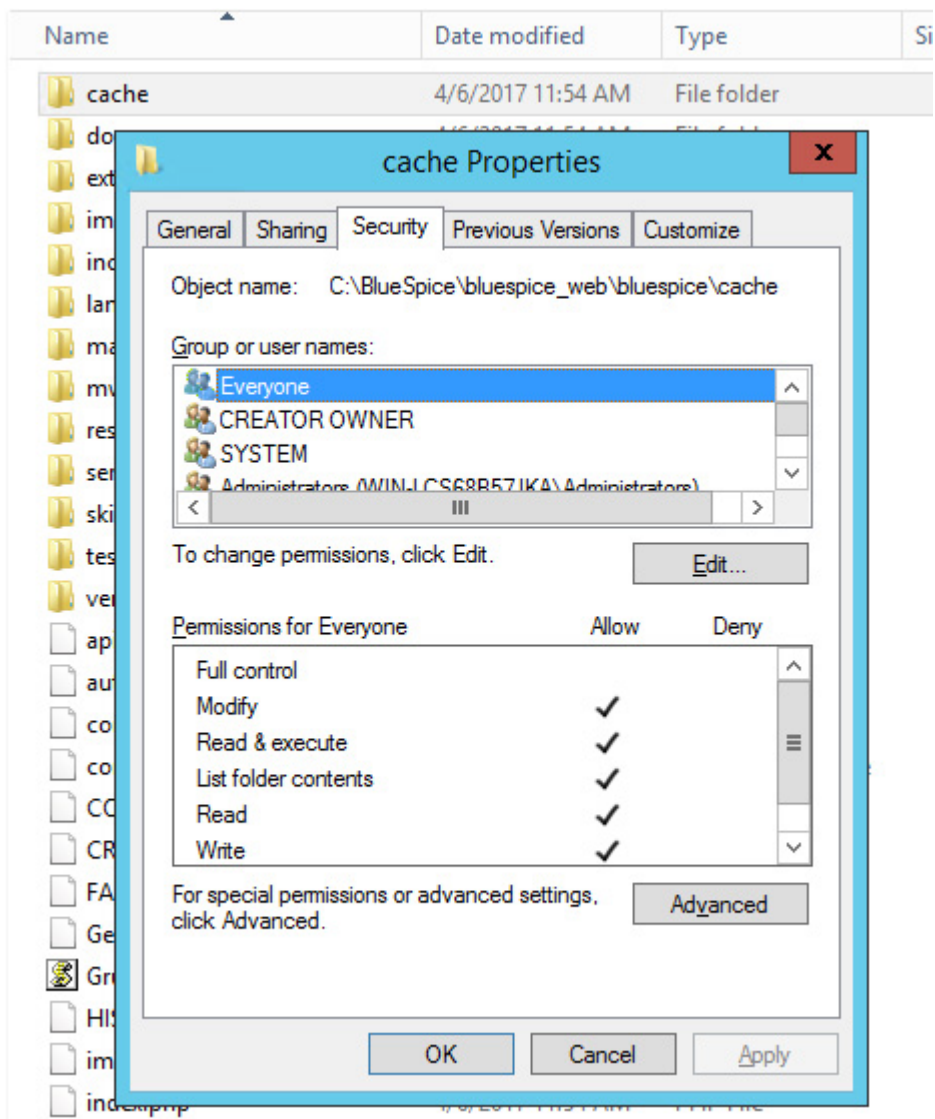
Affected Folders

The folders, which require write permissions, are:

- `<installpath-bluespice>/cache`
- `<installpath-bluespice>/images`
- `<installpath-bluespice>/extensions/BlueSpiceFoundation/config`
- `<installpath-bluespice>/extensions/BlueSpiceFoundation/data`
- `<installpath-bluespice>/extensions/Widgets/compiled_templates` (**only BlueSpice pro**)

Assignment of Permissions with Windows

Assign "change" rights for this folder for the local user "Everyone".



Assignment of Permissions with Linux

Here you can assign rights much more strictly, which is also recommended. Transfer the directory `<installpath-bluespice>` recursively to the user root (CHMOD for Files 644, CHMOD for Directories 755) and after this, transfer the mentioned directory recursively to the user and the group, under which the Apache Web Server runs (Debian/Ubuntu e.g. "www-data").

In the following, we provide a bash script, which works through this tasks for you with only one command.

To do so, create the file `/usr/local/bin/setWikiPerm` and copy the following code into this file:

```
#!/bin/bash

WWW_USER="www-data"
WWW_GROUP="www-data"

WWW_HOME=`eval echo ~$WWW_USER`
```

```
WWW_CFG=$WWW_HOME/.config

if [ $# -eq 0 ]; then
    echo "You must enter the path of your MediaWiki installation."
    exit
elif [ ! -d $1 ]; then
    echo "$1 does not exist or is no path."
    exit
fi

PATH=`echo "$1" | sed -e 's#/###'`

/usr/bin/find $PATH -type d -exec /bin/chmod 755 {} \;
/usr/bin/find $PATH -type f -exec /bin/chmod 644 {} \;

/bin/chown -R root:root $PATH

pathes=(
    "$PATH/cache" \
    "$PATH/images" \
    "$PATH/_sf_archive" \
    "$PATH/_sf_instances" \
    "$PATH/extensions/BlueSpiceFoundation/data" \
    "$PATH/extensions/BlueSpiceFoundation/config" \
    "$PATH/extensions/Widgets/compiled_templates" \
)

for i in "${pathes[@]}"; do
    if [ -d $i ]; then
        /bin/chown -R $WWW_USER:$WWW_GROUP $i
    fi
done

if [ ! -d $WWW_CFG ]; then
    /bin/mkdir $WWW_CFG
fi

/bin/chown -R $WWW_USER:$WWW_GROUP $WWW_CFG

/usr/bin/find $PATH/extensions -iname 'create_pygmentize_bundle' -exec /bin/chmod +x {} \;
/usr/bin/find $PATH/extensions -iname 'pygmentize' -exec /bin/chmod +x {} \;
/usr/bin/find $PATH/extensions -name 'lua' -type f -exec /bin/chmod 755 {} \;
```

If needed, replace the content of the variables

```
WWW_USER="www-data"
WWW_GROUP="www-data"
```

with the appropriate user and group of your distribution.

After this, assign CHMOD 755 to this file. Now you can run the script and let it do the complete permission setting automatically with the following command:

```
setWikiPerm <installpath-bluespice>
```



Note that when the `update.php` is executed on the console, the rights can be partially discarded. For this reason, set the rights to `"update.php"` again.

Deactivating installcheck.php

Contents

1	Tips for this Document	7
2	Deactivating installcheck.php	7

As soon as the setup of BlueSpice is completed, you should prevent the execution of the `installcheck.php` while using the wiki productively. A short instruction can be found in this document.

Tips for this Document

- Please, read this manual completely and work through the single installation steps one after another.
- For editing the configuration files with a text editor, the files must be saved in UTF-8 coding without BOM (Byte Order Mark).
- The placeholder `<installpath-bluespice>` stands for the path to your BlueSpice installation, e.g. `C:\inetpub\wwwroot\bluespice` (Windows) or `/var/www/bluespice` (Linux).

Deactivating `installcheck.php`

Switch to the directory `<installpath-bluespice>` and open the `installcheck.php` file in a text editor. Insert a new line after the first line and insert

```
die( 'Deactivated.' );
```

Save and exit the file. The `installcheck.php` is no longer accessible now.

If you need to restore this file at a later time, it is sufficient to temporarily disable inserted line by placing the `#` character at the beginning of the line.

Save Directories

Contents

1 Tips for this Document	8
2 Explanation for Saving Directories	8

Tips for this Document

- Please, read this manual completely and work through the single installation steps one after another.
- For editing the configuration files with a text editor, the files must be saved in UTF-8 coding without BOM (Byte Order Mark).
- The placeholder `<installpath-bluespice>` stands for the path to your BlueSpice installation, e.g. `C:\inetpub\wwwroot\bluespice` (Windows) or `/var/www/bluespice` (Linux).

Explanation for Saving Directories

It is highly recommended, to lock several directories to save them from access from external browsers, so that calling up the directory or the content delivers the HTTP status code (Forbidden).

To find out how this works with the webserver you are using, please read the documentation of your webserver software.

The following directories should be saved:

- `<bluespice-url>/cache`
- `<bluespice-url>/images`
Please keep in mind that you need to unblock the subfolder `<bluespice-url>/images/bluespice/flexiskin` afterwards, because this subfolder must be accessible.
- `<bluespice-url>/mw-config`