

Contents

1. Reference:InsertLink
2. FileLink


InsertLink

"InsertLink" is a tool developed by "Hallo Welt!" for inserting links into wiki articles:

- to other wiki pages,
- to wiki pages in specific namespaces,
- to external websites,
- to other wikis (e.g. Wikipedia articles) and
- to files on other drive.

These functions do not just save you time working with wiki code, but also present you with a list of existing articles in the wiki for you to choose from.

Where can I find InsertLink?

If you are already in the edit mode, you find the function "InsertLink" in the wiki code editor and in the WYSIWYG editor. The dialogue will open if you click on that button: 

To delete links, mark the link and click on this button: 

Links to other wiki pages

This is the main use. Linking from one article to another. So you can link related issues. You can name articles the same if they exist in different namespaces. So if you choose a namespace InsertLink will show a fitting list.



- Place the cursor where you want the link to be inserted
- Click the "Insert Link" button
- Give the target of the link, this is the correct namespace and the article within it, and, if desired, add the text to be displayed for the link

Start typing a word and the system will show matching page names and also matching namespaces. So if you want to link a page in a namespace, choose a namespace first and then start typing again to look for a page in this namespace. By the way the auto-complete, which starts while typing a title, uses a left and right truncation and therefore also finds elements which are not located in the beginning of a page title.

- Click on "ok"
- The following code is inserted: `[[other_article|text]]` or `[[namespace:wiki|Wiki article]]`

 **NOTE**

If you link to a page in the namespace "Category", no category will be added, but rather a link will be created to the desired category page. This is done via the automatic insertion of a colon before the link target e.g. `[:category: meta|Wiki article]]`. To add a category, it is best to use the [InsertCategory](#) function.

External link

This is how you link to an external website or blog in the web.



- Place the cursor where you want the link to be inserted
- Click the "Easy Insert Link" button and go to external link
- Give the target of the link and, if desired, add the text to be displayed for the link (e.g. <http://www.wikipedia.org>; Wikipedia)
- Click on "ok"
- The following code is inserted: `[http://www.wikipedia.org Wikipedia]`

E-mail link

It is the "mailto" function. So if you click on an email link later your mailing program will open an email with the receiver.

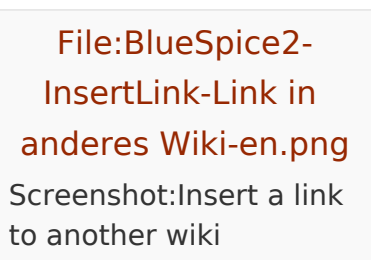


- Place the cursor where you want the link to be inserted
- Click the "Easy Insert Link" button and go to "email link"
- Give the target of the link and, if desired, add the text to be displayed for the link (e.g. medienwerkstatt@hallowelt.biz; Email Hallo Welt)
- Click on "ok"

- The following code is inserted: [mailto:medienwerkstatt@hallowelt.biz Email Hallo Welt]

Link to another wiki (interwiki link)

Here you can link to other wikis (MediaWikis).



- Place the cursor where you want the link to be inserted
- Click the "Easy Insert Link" button and go to "Link to another wiki"
- Give the target of the link and, if desired, add the text to be displayed for the link (e.g. Wiki; Wiki at UseMod)
- Choose the wiki (e.g. UseMod)
- Click on "ok"
- The following code is inserted: [[usemod:Wiki|Wiki at UseMod]]

Links to files

See the article FileLink for information on this.

Tips for working with InsertLink

- Every user can use the InsertLink tool.
Cannot find the article you want to link to? Perhaps it is due to the only limitation for linking to wiki pages. If you do not have the correct rights for the namespace of the article you want to link to, it will not be displayed in the drop-down menu. Generally read-rights are necessary.
- When linking to wiki pages, generally only those page names are offered which lie in the chosen namespace. When changing the namespace, you may need to clear the page field to give you a new choice.

FileLink

FileLink is a tool developed to add a link to a file in the filesystem. The file links must be enabled in the settings of the wiki. In addition, settings in the browser and possibly in the workstations are needed to use FileLinks.

INFO

The real potential is that you can use this mechanism to connect to any system reachable via URL, e.g.

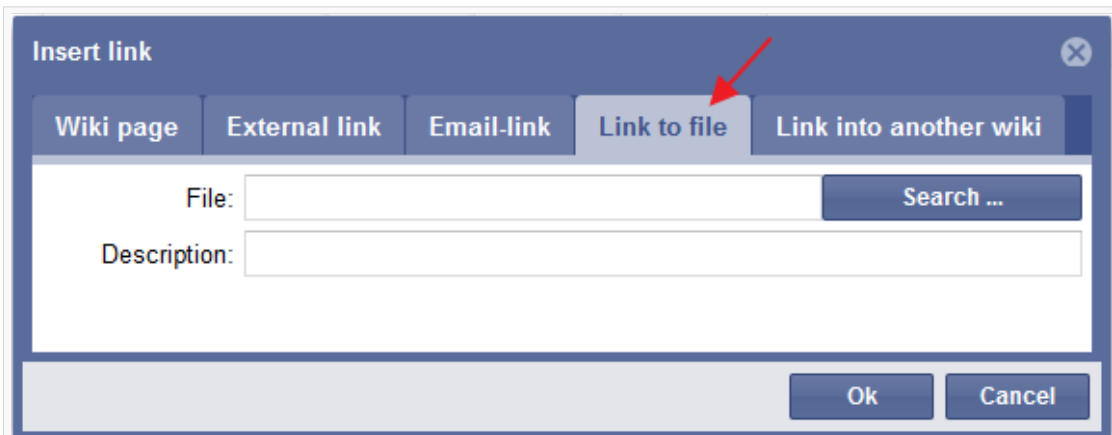
- intranet articles
- Lotus Notes addresses
- Sharepoint documents

Where do I find FileLink File Link?



The button "File Link" you will find in both editors (WYSIWYG and wikicode).

Please select "link to file":



The screenshot shows a dialog box titled "Insert link" with a close button in the top right corner. It has five tabs: "Wiki page", "External link", "Email-link", "Link to file", and "Link into another wiki". A red arrow points to the "Link to file" tab, which is currently selected. Below the tabs, there are two input fields: "File:" with a "Search ..." button to its right, and "Description:". At the bottom right of the dialog are "OK" and "Cancel" buttons.

Screenshot: Dialogue for inserting file links

Insert link

- Position the cursor where you want the file link to appear
- Open the InsertLink tool
- Enter the link target as link path (browse for the file) and an additional description if you want
- Click on ok
- In the code you will see the file link as the following: `[[link path|description]]`

Syntax

Filelinks will be activated with the help of the "file://" -protocol. A link to a file `f:\temp\Test.doc` looks like this:

```
file:///f:/temp/Test.doc
```

Filelinks have to be activated in the wiki to be recognised.

Filelinks are often disabled in browsers because they represent a potential security gap (other executable programs could be linked, too).

Particularities of browsers

Firefox

Links can easily be opened if the Extension LocalFile is installed:<https://addons.mozilla.org/de/firefox/addon/locallink/>

Note: Filelinks do work if Firefox is started from the programmes folder or the Desktop, because all personal configurations are loaded and started. If you are starting Firefox for example out of an E-Mail-Tool (e.b. Lotus Notes) the Filelinks won't work, as your personal configuration is not loaded. There seems to be no remedy, maybe the popupblocker is a problem here.

The names need to be in one line, divided by whitespaces if there are more policies defined:

```
user_pref("capability.policy.policynames", "localfilelinks OTHERPOLICY");
```

more Info

Google Chrome

Links can be opened easily when the Extension LocalFile is installed:

```
https://chrome.google.com/webstore/detail/locallinks  
/jllpkdkcdjndhggodimiphkghogcpida/
```

Internet Explorer

- Testing if the Filelink is valid:

Copy the Link to the file via your context menu and insert it in the address bar of your browser. If the file opens the Filelink is ok.

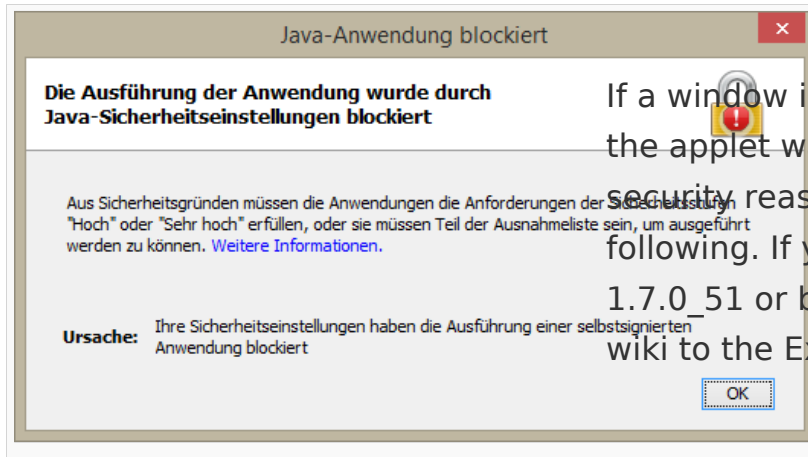
- Add the address to your wiki (e.g. <https://wiki.hallowiki.biz>) to your list of trusted sites.
- If you are working with UNC paths the links have a higher propability of working (file:///127.0.0.1/TEMP/debug.txt). The corresponding folders need to be accessible, the access happens by using the share name. **Warning:** Whitespaces need to be replaced with %20.

Older versions of the IE open Filelinks more easy. Since IE6 (SP2) those links won't open, adding the pages to the list of trusted sites won't help either. Solution: Change the following entry in the Windows Registry from 3 (default) to 0: HKCU\Software\Microsoft\Windows\CurrentVersion\Internet Settings\Lockdown_Zones\0\2101. Relog afterwards.

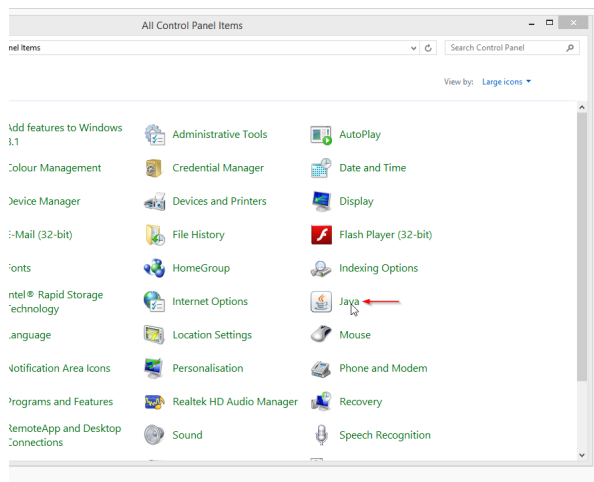
- If there are two slashes given with the protocol, Links with whitespaces (%20) are encoded wrong, IE changes it to %2520. So remember to always work with file:///.

Java Settings

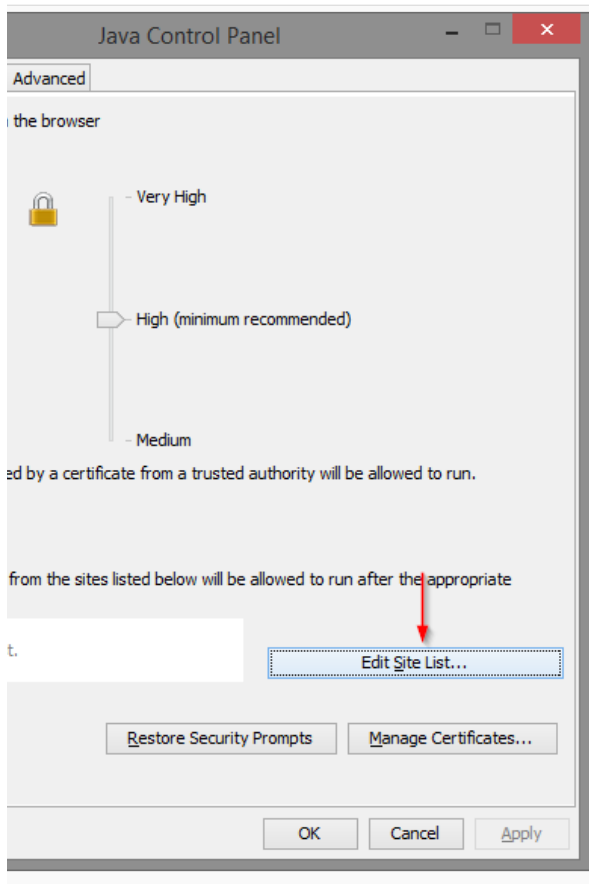
To load the "Insert file" dialog Java is needed.



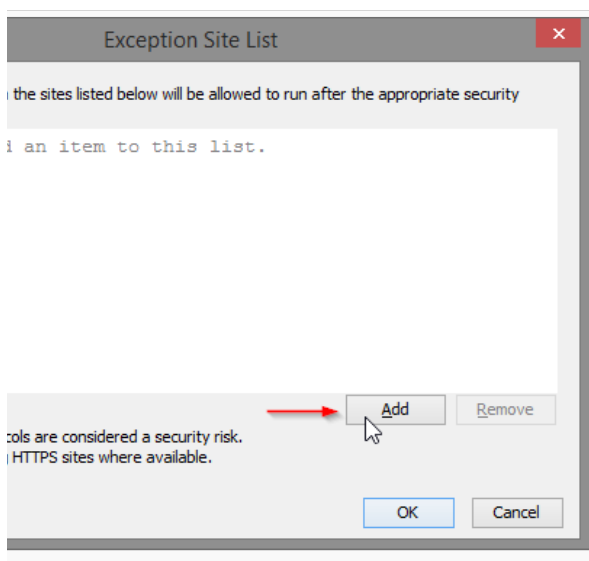
If a window is showing up saying, that the applet was blocked due to security reasons, please proceed as following. If you have Java Version 1.7.0_51 or bigger you can add your wiki to the Exception Site List.



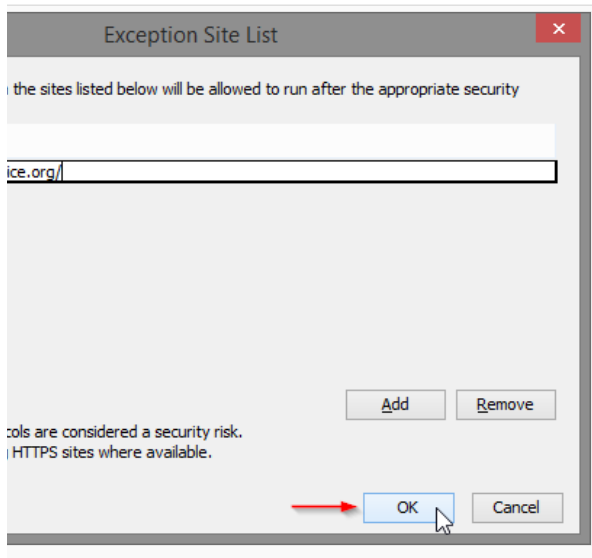
Open your system settings and click on "Java"



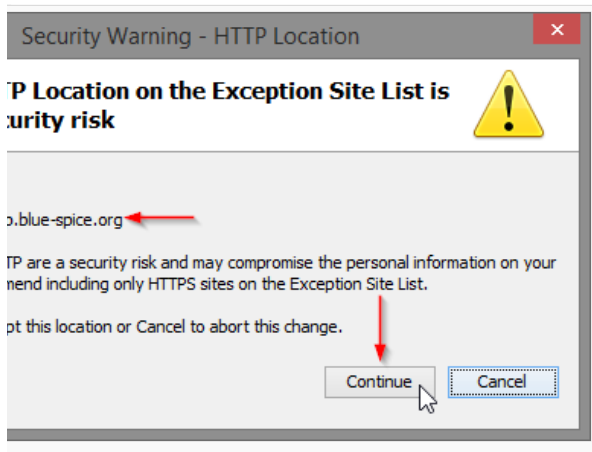
Click the "Security" Tab and "Edit Site List..."



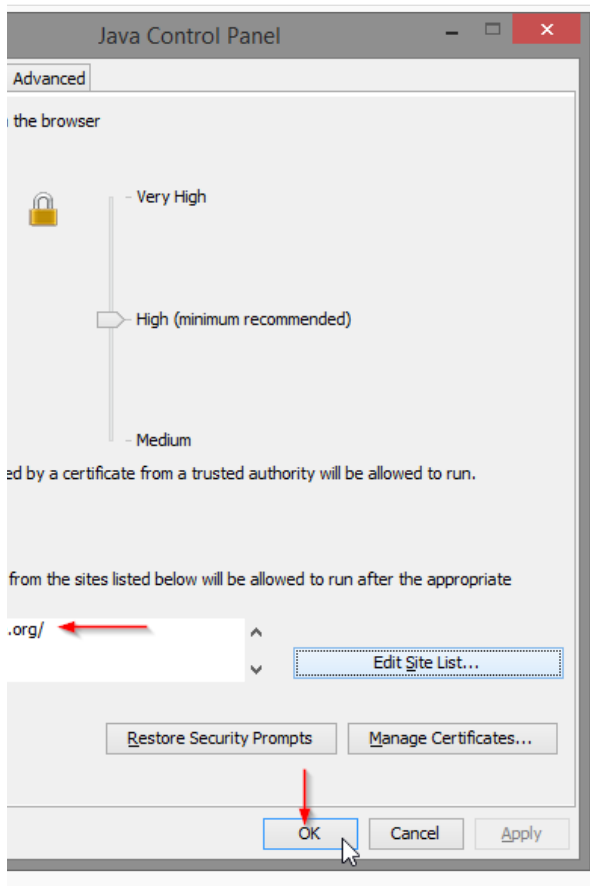
In the upcoming window, click "Add" to add your website to the trusted pages



After entering your address, click ok

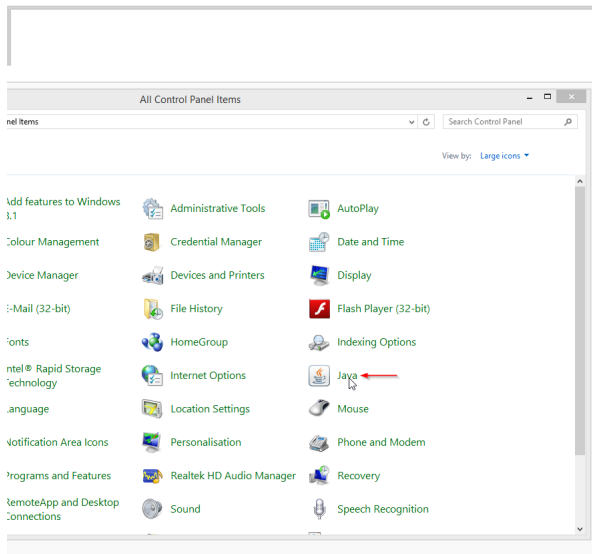


Java wants you to accept the entry you've made. Re-check your URL and click "Continue".

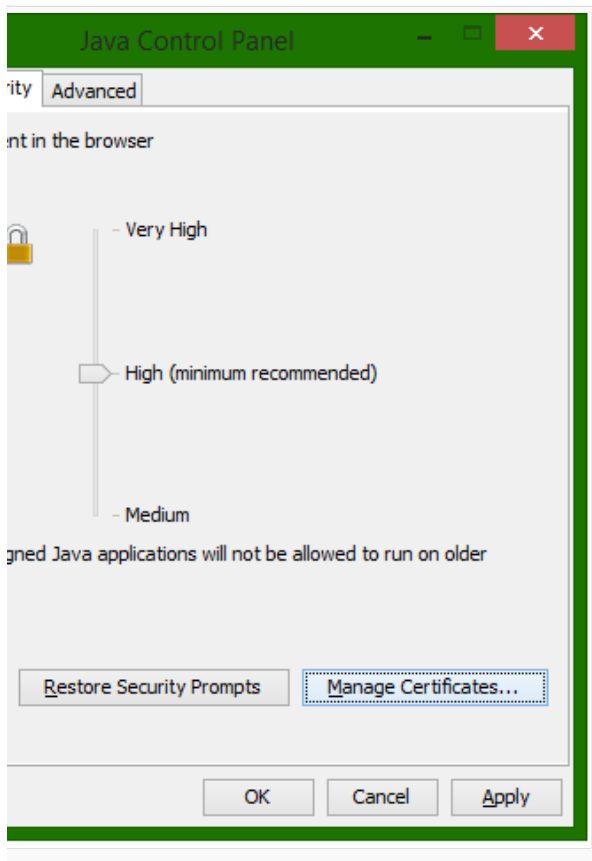


Now you should see your URL in the Exception Site List. Click ok to save it.

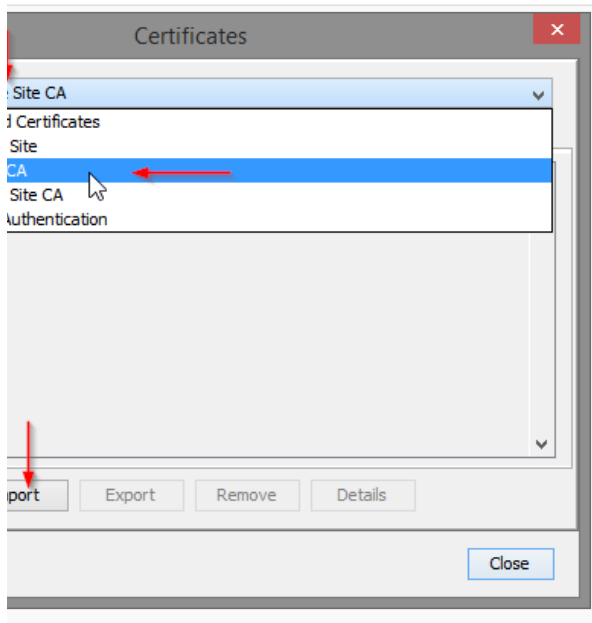
If you have Java Version 1.7.0_40 or 1.7.0_45 you need to import the certificate the applet uses.



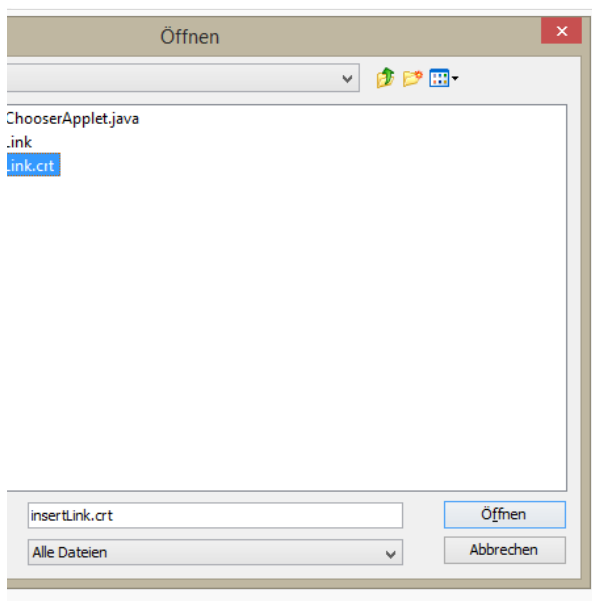
Open your system settings and click on "Java"



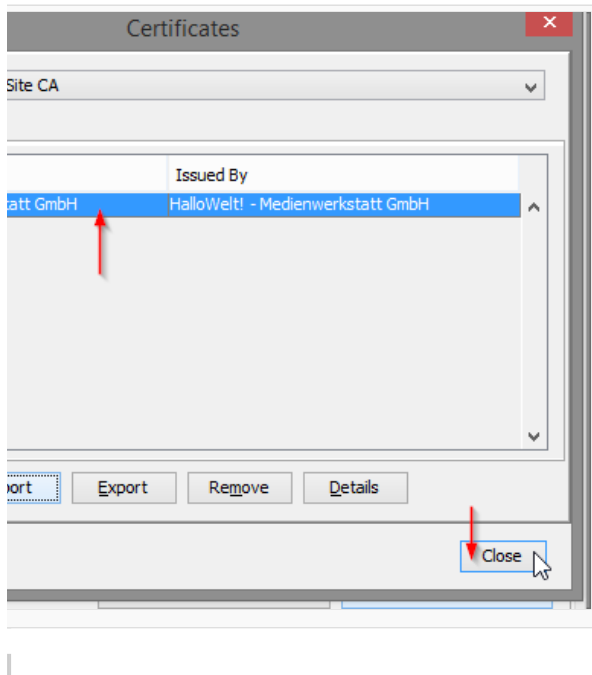
Open your system settings and click on "Java"



In the upcoming window, choose "Signer CA" as Certificate type. Afterwards click "Import"



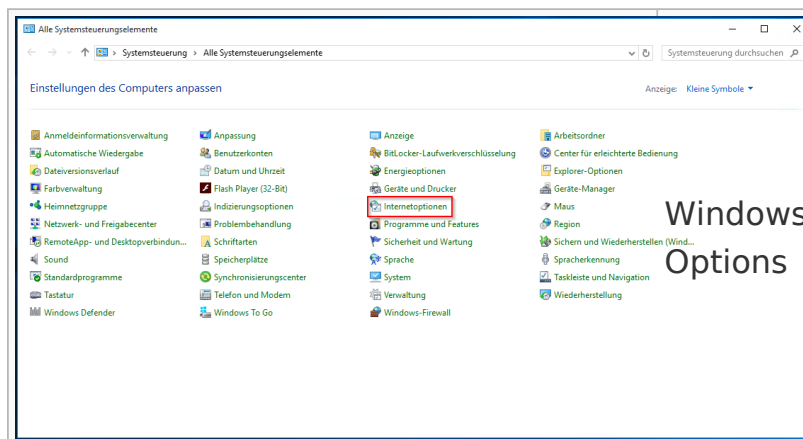
Choose the pasteImage.crt file. If you can't see the file, choose "All Files" from the "Files of type" dropdown



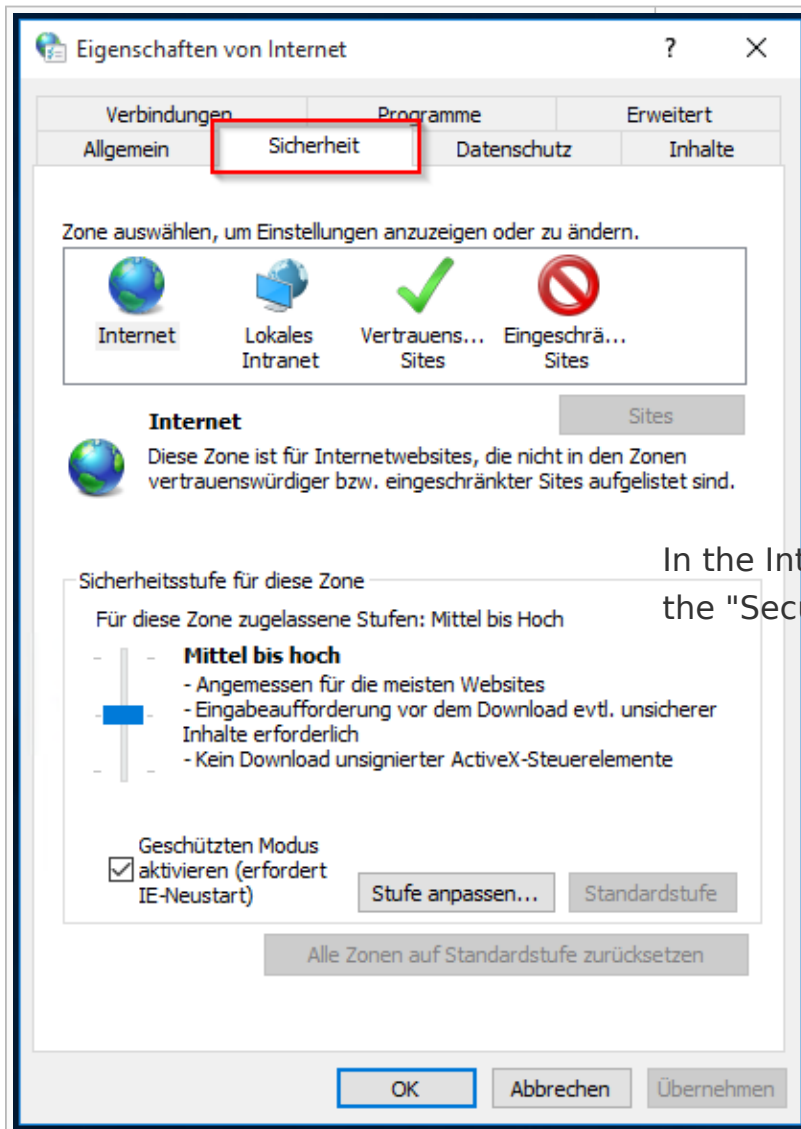
Verify, that you have imported the right certificate. You can see the HalloWelt! - Medienwerkstatt GmbH as the issuer.

Note: After those steps it is important to restart your browser completely!

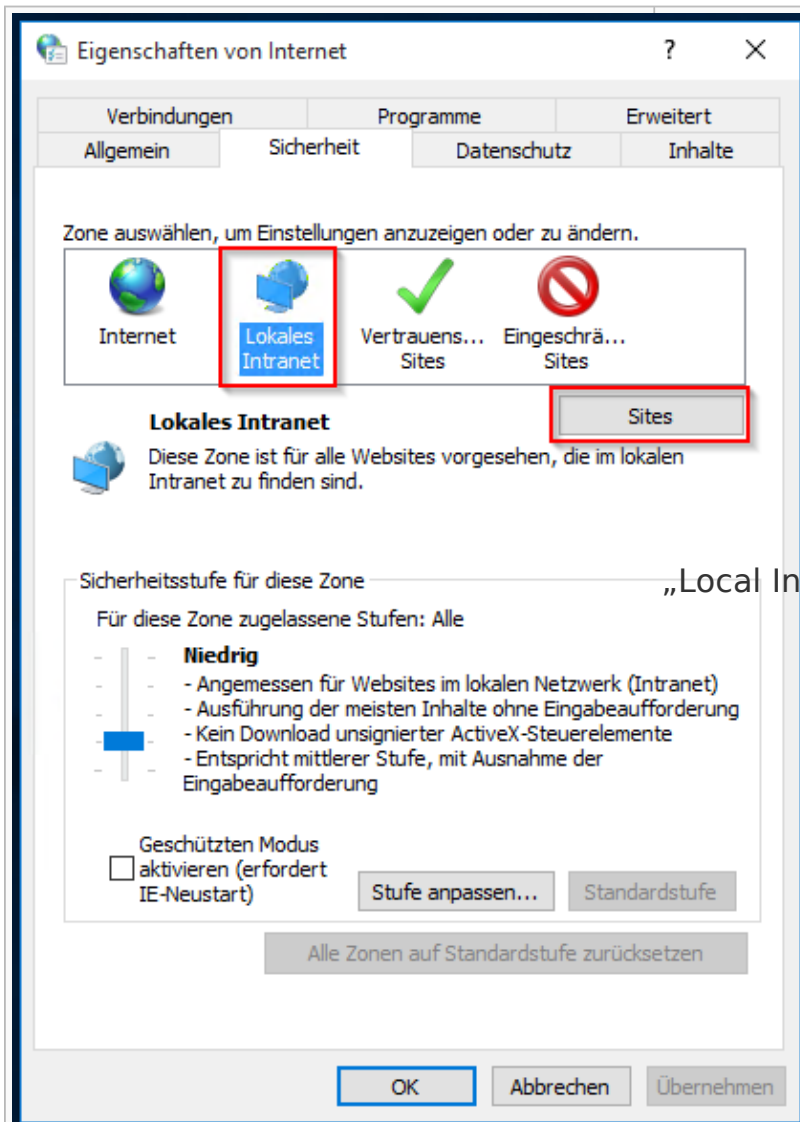
PC Settings



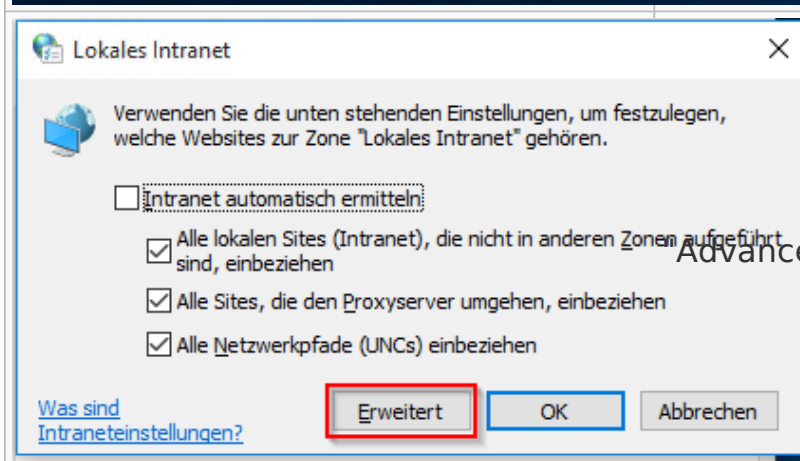
Windows Control Panel -> Internet Options



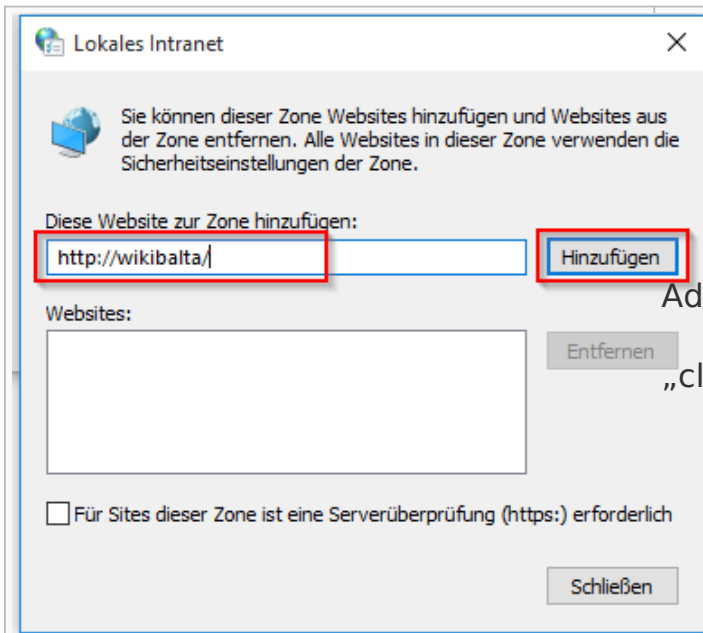
In the Internet Options window, select the "Security" tab



„Local Intranet“ > „Sites“

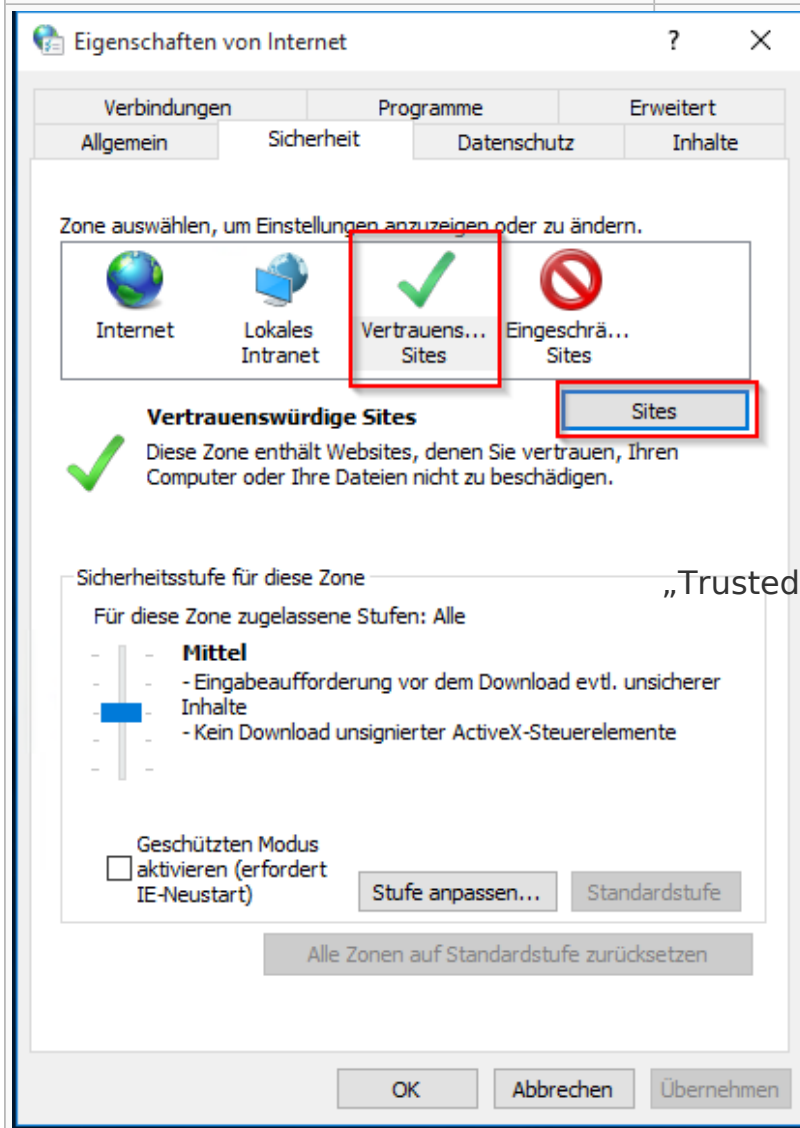


Advanced

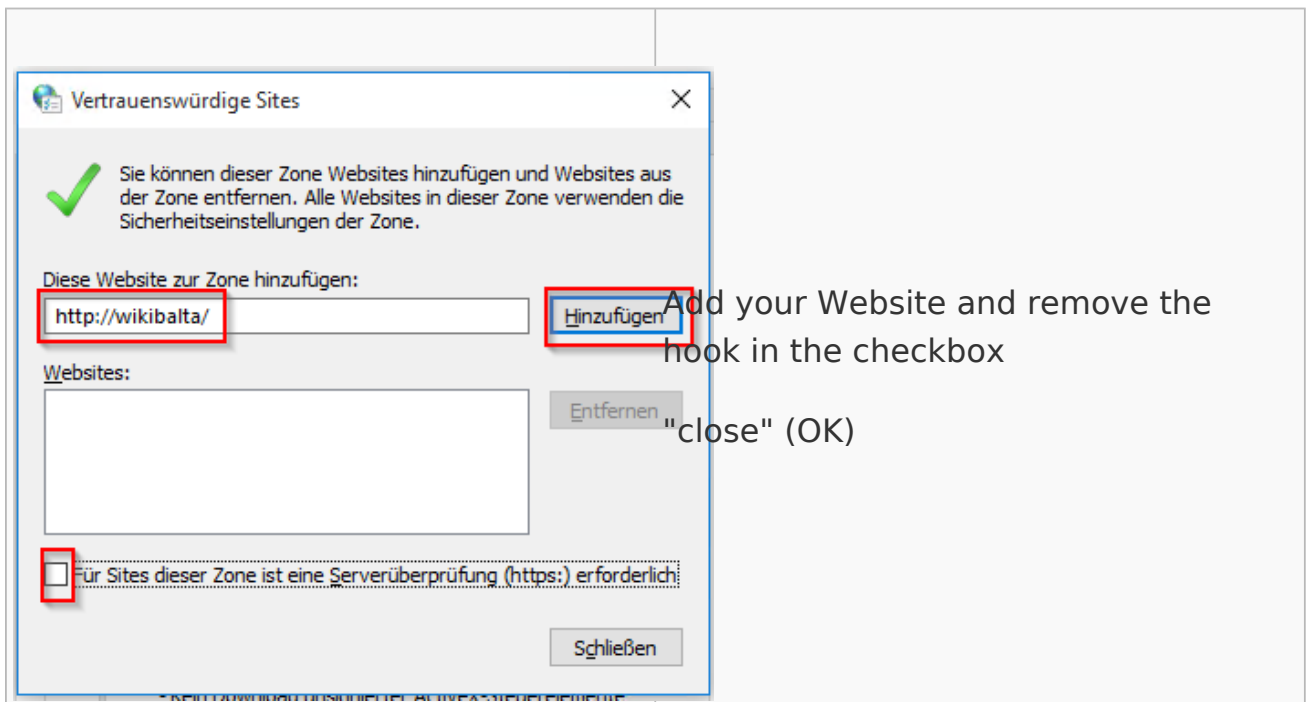


Add your Website

„close“-> „OK“



„Trusted Sites“ -> „Sites“



Attention!!

In general it is prohibited for all browsers to open files from a system.

The expose data from the file system to a website's code. - A typical error message could be something like: "/ fakepath / file C".

In In order to read out file paths (and put a link into the article) it needs a Java Applet, which is allowed to read out and return the path to the website.

In the future, browsers will no longer support these applets (Chrome already doesn't). => Unfortunately this is a development that we can not influence.

But that does not mean that "InsertLink" no longer works, or that links to files aren't possible.

They probably need to be entered manually or be set by copy and paste of the corresponding path.

Regarding the opening of file protocol links: Only Internet Explorer supports opening a directory in the Windows Explorer (file system browser), because

Microsoft grants the own browser a better support. All other browsers have to display these in their own window.

Furthermore, it's not allowed to open files and directories by default. Outside the intranet, this would expose a major security issue. (For example: a .exe which installs malware in the background) Therefore it's necessary to activate this function for a particular URL (in this case the wiki's address) in every browser.

For an helpful article about this topic, please visit:

Browser particularities

Because of the further development of the various browsers, it's possible, that plugins doesn't work anymore or need to be updated. Also it might be necessary to change the browser settings.

For example, here is a plugin for Mozilla Firefox: <http://addons.mozilla.org/en-US/firefox/addon/localink/>

Ressourcen

- http://kb.mozillazine.org/Firefox_-_Issues_-_Links_to_Local_Pages_Don't_Work
- <http://www.pcreview.co.uk/forums/thread-724888.php>
- <http://windowsxp.mvps.org/ie/elevlocalfile.htm>
- <http://windowsitpro.com/article/articleid/84107/jsi-tip-9601-an-internet-explorer-hyperlink-will-not-open-a-local-file-on-windows-xp-with-sp2.html>
- http://en.wikipedia.org/wiki/File_URI_scheme
- http://www.ontopia.net/omnigator/models/topic_complete.jsp?tm=support-kb.ltm&id=local-file-links
- <http://www.cs.tut.fi/~jkorpela/fileurl.html>
- Keywords: local file, file link, filelink, dateilink, link auf datei, file URI, file protocol