

Contents

1. Manual:Extension/Workflows	2
2. Manual:Extension/Workflows/Activity/ApprovePage	13
3. Manual:Extension/Workflows/Activity/CustomForm	14
4. Manual:Extension/Workflows/Activity/EditRequest	17
5. Manual:Extension/Workflows/Activity/GroupVote	18
6. Manual:Extension/Workflows/Activity/SendMail	21
7. Manual:Extension/Workflows/Activity/UserVote	24
8. Reference:BlueSpiceGroupManager	27
9. Reference:FlaggedRevs	29
10. Reference:UnifiedTaskOverview	31
11. Reference:Workflows	32
12. User:Margit.link-rodrigue	34

Workflows

[Browse history interactively](#)
[VisualWikitext](#)

Revision as of 19:19, 18 March 2022 ([view source](#))

[Margit Link-Rodrigue](#) ([talk](#) | [contribs](#))

No edit summary

[← Older edit](#)

Revision as of 13:11, 27 April 2022 ([view source](#))

[Margit Link-Rodrigue](#) ([talk](#) | [contribs](#))

No edit summary

Tag: [Visual edit](#)

[Newer edit →](#)

Line 45:

```
[[File:Manual:bpmn-SingleUserApproval.svg|center|thumb|750x750px|BPMN diagram of a "Single user approval" workflow|alt=BPMN diagram of a "Single user approval" workflow]]
```

```
{| class="wikitable" style="width:100%;"
```

```
!Activity
```

```
!Description
```

```
|-
```

```
| CollectData
```

```
|In the first workflow step, the workflow initiator enters the settings:
```

Line 55:

```
***Send report to:** An email report with the results will be sent to this email address when the review is finished. If a username is specified here, an email address must be stored in the user administration so that the report can be sent.
```

```
|-
```

```
|PageCheckout
```

```
|The page is locked for editing by other wiki users. Only the user with the workflow task can edit while this workflow is running.
```

```
|-
```

```
|UserVote
```

```
|The assigned user carries out a vote and either accepts the page or rejects it. Alternatively, the task can be delegated. In the event of a rejection, the workflow skips the next step (ApprovePage).
```

```
|-
```

```
| ApprovePage
```

```
|"Only if" the user has submitted a positive vote (accept), the page is set to an approved state.
```

```
|-
```

```
|SendMail
```

```
|An email report is sent to the report recipient who was specified in the first step.
```

```
|-
```

Line 45:

```
[[File:Manual:bpmn-SingleUserApproval.svg|center|thumb|750x750px|BPMN diagram of a "Single user approval" workflow|alt=BPMN diagram of a "Single user approval" workflow]]
```

```
{| class="wikitable" style="width:100%;"
```

```
! style="width:200px;" |Activity
```

```
!Description
```

```
|-
```

```
| style="width:200px;" | CollectData
```

```
|In the first workflow step, the workflow initiator enters the settings:
```

Line 55:

```
***Send report to:** An email report with the results will be sent to this email address when the review is finished. If a username is specified here, an email address must be stored in the user administration so that the report can be sent.
```

```
|-
```

```
| style="width:200px;" |PageCheckout
```

```
|The page is locked for editing by other wiki users. Only the user with the workflow task can edit while this workflow is running.
```

```
|-
```

```
| style="width:200px;" |UserVote
```

```
|The assigned user carries out a vote and either accepts the page or rejects it. Alternatively, the task can be delegated. In the event of a rejection, the workflow skips the next step (ApprovePage).
```

```
|-
```

```
| style="width:200px;" | ApprovePage
```

```
|"Only if" the user has submitted a positive vote (accept), the page is set to an approved state.
```

```
|-
```

```
| style="width:200px;" |SendMail
```

```
|An email report is sent to the report recipient who was specified in the first step.
```

```
|-
```

|PageCheckin

|The page is unlocked.

|}

Line 78:

[[File:Manual:bpmn-ExpertDocControl.svg|center|thumb|550x550px|BPMN diagram of the "Expert document control" workflow|alt=BPMN diagram of the "Expert document control" workflow]]

{| class="wikitable" style="width:100%,"

!Activity

! Description

|-

|CollectData

|In the first workflow step, the workflow initiator enters the settings:

"User:" User who is assigned to a task. Three different users have to be specified: "'Editor"', "'Reviewer"', "'Approver'"

Line 89:

"Send report to:" An email report with the results will be sent to this email address when the review is finished. If a username is specified here, an email address must be stored in the user administration so that the report can be sent.

|-

| PageCheckout

|The page is locked for users who do not participate in the workflow. Only the "'Editor'" (first workflow participant) and "'Reviewer'" (second participant) of the workflow can edit the page during checkout.

|-

|EditPage

|The "'Editor'" user can edit the page and completes the task without comment.

|-

|UserVote

|After the "'Edito"'r step has been completed,the "'Reviewer'" user can edit the page and submit a vote. As an alternative, the "'Reviewer'" can delegate the task. If the vote is positive (Approve), the workflow continues. If the "'Reviewer'" rejects, the workflow goes back to the "'Editor"'.

|-

|PageCheckin

|After the "'Reviewer'" submits a positive vote (accept), the page is checked in and the workflow continues.

|-

|PageCheckout

| style="width:200px;" |PageCheckin

|The page is unlocked.

|}

Line 78:

[[File:Manual:bpmn-ExpertDocControl.svg|center|thumb|550x550px|BPMN diagram of the "Expert document control" workflow|alt=BPMN diagram of the "Expert document control" workflow]]

{| class="wikitable" style="width:100%,"

! style="width:200px;" |Activity

! Description

| style="height:25px;"

| style="width:200px;" |CollectData

|In the first workflow step, the workflow initiator enters the settings:

"User:" User who is assigned to a task. Three different users have to be specified: "'Editor"', "'Reviewer"', "'Approver'"

Line 89:

"Send report to:" An email report with the results will be sent to this email address when the review is finished. If a username is specified here, an email address must be stored in the user administration so that the report can be sent.

|-

| style="width:200px;" | PageCheckout

|The page is locked for users who do not participate in the workflow. Only the "'Editor'" (first workflow participant) and "'Reviewer'" (second participant) of the workflow can edit the page during checkout.

|-

| style="width:200px;" |EditPage

|The "'Editor'" user can edit the page and completes the task without comment.

|-

| style="width:200px;" |UserVote

|After the "'Edito"'r step has been completed,the "'Reviewer'" user can edit the page and submit a vote. As an alternative, the "'Reviewer'" can delegate the task. If the vote is positive (Approve), the workflow continues. If the "'Reviewer'" rejects, the workflow goes back to the "'Editor"'.

|-

| style="width:200px;" |PageCheckin

|After the "'Reviewer'" submits a positive vote (accept), the page is checked in and the workflow continues.

|-

| style="width:200px;" |PageCheckout

|In this step, the page checkout locks the page for editing completely. The ""Approver"" user will not be able to change the page, but needs to approve it.

|-

|ApprovePage

|The Approver can either complete or delegate the task. After the ""Approver"" (or the delegate) finishes the assigned task, the page is set from "draft" to "approved" status if the page was in draft status (only if the approver submits a positive vote). If not, this step is skipped.

|-

|SendMail

|If an email or user was specified in the workflow settings, the report is now getting sent to that user.

|-

|PageCheckin

|The page gets unlocked for editing.

|}

Line 121:

[[File:Manual:bpmn-GroupFeedback..svg|center|thumb|450x450px|BPMN diagram of the "Group feedback" workflow|alt=BPMN diagram of the "Group feedback" workflow]]

{| class="wikitable" style="width:100%;"

!Activity

!Description

|-

| CollectData

| In the first workflow step, the workflow initiator enters the settings:

|}

Line 131:

* S'end report to:" An email report with the results will be sent to this email address when the review is finished. If a username is specified here, an email address must be stored in the user administration so that the report can be sent.

|-

|GroupFeedback

|All users in the assigned group provide feedback via a comment field. This is a parallel workflow, which means that the order of the feedback does not matter.

|-

|SendMail

|If an email or user was specified in the workflow settings, the report is now getting sent to that user.

|}

Line 145:

|In this step, the page checkout locks the page for editing completely. The ""Approver"" user will not be able to change the page, but needs to approve it.

|-

| style="width:200px;" |ApprovePage

|The Approver can either complete or delegate the task. After the ""Approver"" (or the delegate) finishes the assigned task, the page is set from "draft" to "approved" status if the page was in draft status (only if the approver submits a positive vote). If not, this step is skipped.

|-

| style="width:200px;" |SendMail

|If an email or user was specified in the workflow settings, the report is now getting sent to that user.

|-

| style="width:200px;" |PageCheckin

|The page gets unlocked for editing.

|}

Line 121:

[[File:Manual:bpmn-GroupFeedback..svg|center|thumb|450x450px|BPMN diagram of the "Group feedback" workflow|alt=BPMN diagram of the "Group feedback" workflow]]

{| class="wikitable" style="width:100%;"

! style="width:200px;" |Activity

!Description

|-

| style="width:200px;" | CollectData

| In the first workflow step, the workflow initiator enters the settings:

|}

Line 131:

* S'end report to:" An email report with the results will be sent to this email address when the review is finished. If a username is specified here, an email address must be stored in the user administration so that the report can be sent.

|-

| style="width:200px;" |GroupFeedback

|All users in the assigned group provide feedback via a comment field. This is a parallel workflow, which means that the order of the feedback does not matter.

|-

| style="width:200px;" |SendMail

|If an email or user was specified in the workflow settings, the report is now getting sent to that user.

|}

Line 145:

[[File:Manual:bpmn-UserFeedback.svg|center|thumb|500x500px|BPMN diagram of the "Single user feedback" workflow|alt=BPMN diagram of the "Single user feedback" workflow]]

{| class="wikitable" style="width:100%;"

!Activity

!Description

|-

|CollectData

|In the first workflow step, the workflow initiator enters the settings:

Line 155:

* Send report to: An email report with the results will be sent to this email address when the review is finished. If a username is specified here, an email address must be stored in the user administration so that the report can be sent.

|-

| UserFeedback

|The assigned user sends a comment.

|-

|SendMail

|If an email or user was specified in the workflow settings, the report is now getting sent to that user.

|}

[[File:Manual:bpmn-UserFeedback.svg|center|thumb|500x500px|BPMN diagram of the "Single user feedback" workflow|alt=BPMN diagram of the "Single user feedback" workflow]]

{| class="wikitable" style="width:100%;"

! style="width:200px;" |Activity

!Description

|-

| style="width:200px;" |CollectData

|In the first workflow step, the workflow initiator enters the settings:

Line 155:

* Send report to: An email report with the results will be sent to this email address when the review is finished. If a username is specified here, an email address must be stored in the user administration so that the report can be sent.

|-

| style="width:200px;" | UserFeedback

|The assigned user sends a comment.

|-

| style="width:200px;" |SendMail

|If an email or user was specified in the workflow settings, the report is now getting sent to that user.

|}

Revision as of 13:11, 27 April 2022

Contents

1 Introduction 7

2 Notifications and reports 7

3 Workflow activities 7

 3.1 Single user approval 7

 3.2 Expert document control 8

 3.3 Group feedback 10

 3.4 Feedback 11

4 Overview page 11

 4.1 Tasks overview 12

5 How to add a custom workflow 12

Introduction

In BlueSpice 4.1, workflows are based on [BPMN 2.0](#). Four different types of page-based workflows are already integrated. Their purpose is a page review to obtain feedback via a user vote or to trigger a page approval. In the following, these workflows are therefore called review workflows.

Types of reviews

Workflow type	Participants	Description
Single user approval	1 user	A single user is asked to vote about a page. If a user submits a positive vote, the page is automatically approved.
Expert document control	3 users	After a page has been edited by a specific user, the page is reviewed by an expert and then approved by a user who is responsible for approvals.
Group feedback	1 group	A group (which needs to exist in the group manager) is requested to leave a comment on a page.
Single user feedback	1 user	A user is asked to send a comment regarding a page.

Notifications and reports

- **When a task gets assigned:** When a user needs to complete a workflow task, both a notification and a [task](#) are created.
- **At the end of a workflow:** After a workflow has ended, the initiator receives a notification and an email is sent to a report recipient (as defined at the beginning of the workflow).
- **When a workflow gets aborted:**
 - A notifications are sent to users with a pending workflow task
 - A notifications are sent to the originator if a workflow got aborted
 - Participants of past or future steps don't receive a notification

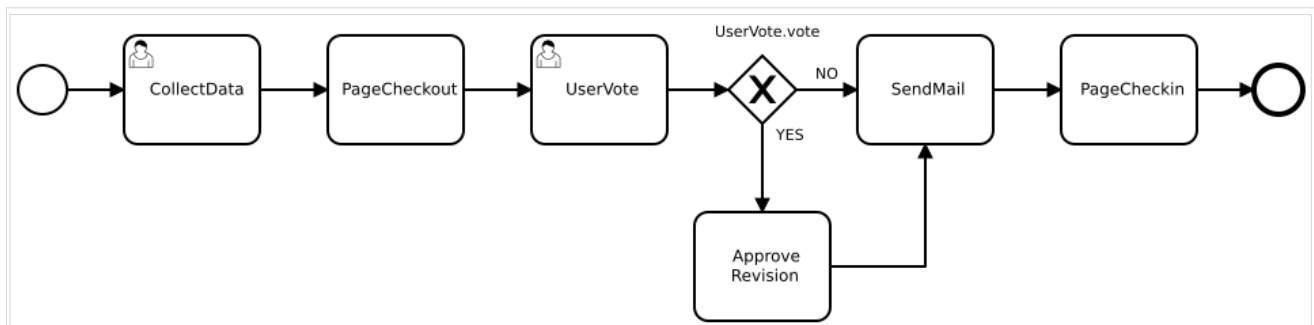
Workflow activities

All approval workflows start with a form where the necessary workflow data is entered by the workflow initiator. Each workflow results in one or more workflow activities.

Single user approval

Purpose: Approval of a draft page by a user with approval rights. This workflow only makes sense if the approval function ([FlaggedRevs](#)) is activated on a page.

Workflow instances: Only one approval workflow can run per page.



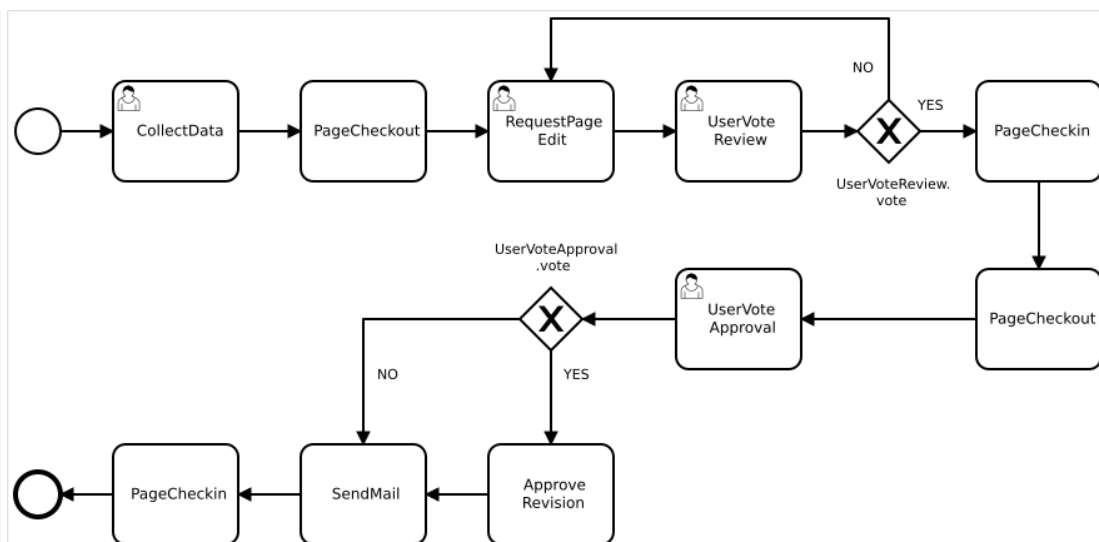
BPMN diagram of a "Single user approval" workflow

Activity	Description
CollectData	In the first workflow step, the workflow initiator enters the settings: <ul style="list-style-type: none">• <i>User</i>: ser who is assigned to the task.• <i>Instructions</i>: A comment or instructions for the user to understand the task.• <i>Send report to</i>: An email report with the results will be sent to this email address when the review is finished. If a username is specified here, an email address must be stored in the user administration so that the report can be sent.
PageCheckout	The page is locked for editing by other wiki users. Only the user with the workflow task can edit while this workflow is running.
UserVote	The assigned user carries out a vote and either accepts the page or rejects it. Alternatively, the task can be delegated. In the event of a rejection, the workflow skips the next step (ApprovePage).
ApprovePage	Only if the user has submitted a positive vote (accept), the page is set to an approved state.
SendMail	An email report is sent to the report recipient who was specified in the first step.
PageCheckin	The page is unlocked.

Expert document control

Purpose: Approval of a draft page according to the "4-eyes principle".

Workflow instances: A page can only have one approval workflow at a time.



BPMN diagram of the "Expert document control" workflow

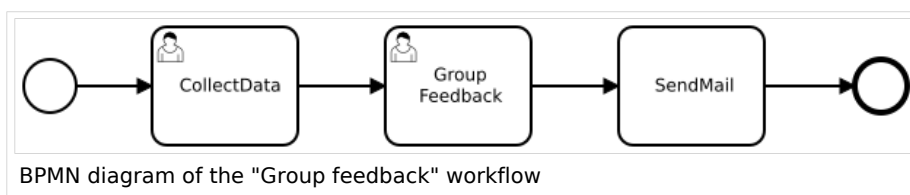
Activity	Description
CollectData	<p>In the first workflow step, the workflow initiator enters the settings:</p> <p><i>User:</i> User who is assigned to a task. Three different users have to be specified: Editor, Reviewer, Approver</p> <p><i>Instructions:</i> A comment or instructions for the users to understand their tasks.</p> <p><i>Send report to:</i> An email report with the results will be sent to this email address when the review is finished. If a username is specified here, an email address must be stored in the user administration so that the report can be sent.</p>
PageCheckout	<p>The page is locked for users who do not participate in the workflow. Only the Editor (first workflow participant) and Reviewer (second participant) of the workflow can edit the page during checkout.</p>
EditPage	<p>The Editor user can edit the page and completes the task without comment.</p>
UserVote	<p>After the Editor step has been completed, the Reviewer user can edit the page and submit a vote. As an alternative, the Reviewer can delegate the task. If the vote is positive (Approve), the workflow continues. If the Reviewer rejects, the workflow goes back to the Editor.</p>
PageCheckin	<p>After the Reviewer submits a positive vote (accept), the page is checked in and the workflow continues.</p>
	<p>In this step, the page checkout locks the page for editing completely.</p>

Activity	Description
PageCheckout	The Approver user will not be able to change the page, but needs to approve it.
ApprovePage	The Approver can either complete or delegate the task. After the Approver (or the delegate) finishes the assigned task, the page is set from "draft" to "approved" status if the page was in draft status (only if the approver submits a positive vote). If not, this step is skipped.
SendMail	If an email or user was specified in the workflow settings, the report is now getting sent to that user.
PageCheckin	The page gets unlocked for editing.

Group feedback

Purpose: Obtaining feedback from the members of a user group. The group must exist in the [group manager](#).

Workflow instances: Several feedback workflows can run independently of one another on one page at the same time.

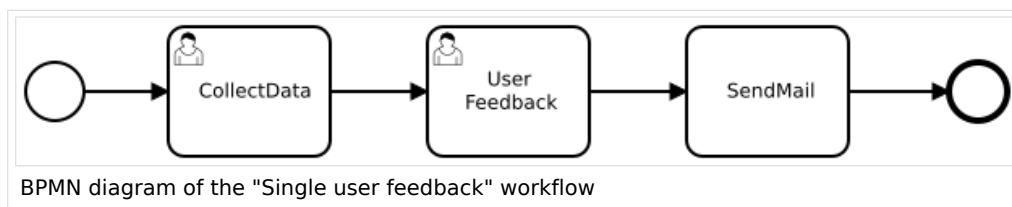


Activity	Description
CollectData	In the first workflow step, the workflow initiator enters the settings: <ul style="list-style-type: none">• <i>Group:</i> User group who is assigned to the task.• <i>Instructions:</i> A comment or instructions for the users to understand their task.• <i>Send report to:</i> An email report with the results will be sent to this email address when the review is finished. If a username is specified here, an email address must be stored in the user administration so that the report can be sent.
GroupFeedback	All users in the assigned group provide feedback via a comment field. This is a parallel workflow, which means that the order of the feedback does not matter.
SendMail	If an email or user was specified in the workflow settings, the report is now getting sent to that user.

Feedback

Purpose: Obtaining feedback from a single user on a page.

Workflow instances: Multiple feedback workflows can run independently of one another on one page at the same time.



Activity	Description
CollectData	In the first workflow step, the workflow initiator enters the settings: <ul style="list-style-type: none">• <i>User:</i> User who is assigned to the task.• <i>Instructions:</i> A comment or instructions for the users to understand their task.• <i>Send report to:</i> An email report with the results will be sent to this email address when the review is finished. If a username is specified here, an email address must be stored in the user administration so that the report can be sent.
UserFeedback	The assigned user sends a comment.
SendMail	If an email or user was specified in the workflow settings, the report is now getting sent to that user.

Overview page

All workflows in the wiki are listed on the page *Special:Workflows overview*. A view for all *active* workflows and a view for *all* workflows can be selected.

Workflows related to this page							×
All	Active						
Type	Subject page	Current tasks	State	Started on	Last activity on		
Group Feedback	Main Page	-	Aborted	14:47, 29 November 2021	14:49, 29 November 2021	see details	
Single user feedback	Main Page	-	Finished	15:43, 3 November 2021	15:43, 3 November 2021	see details	
Expert document control	Main Page	UserVoteReview	Active	12:20, 21 December 2021	12:20, 21 December 2021	see details	
Single user feedback	Main Page	-	Finished	16:34, 20 December 2021	17:13, 20 December 2021	see details	
< 1 of 3 >							25 rows
Workflows overview page							

Tasks overview

Users are informed about new and pending tasks in their notifications. They can view assigned workflows on their *My tasks* page.

How to add a custom workflow

Users can upload an xml-file of a BPMN diagram with custom activities to the wiki. Currently, the following predefined activities exist:

Extension: Workflows

- [CustomForm](#)
- [UserVote](#)
- [GroupVote](#)
- [UserFeedback](#)
- [GroupFeedback](#)
- [SendMail](#)
- [EditRequest](#)

Extension: PageCheckout

- [PageCheckOut](#)
- [PageCheckIn](#)

Extension: BlueSpiceFlaggedRevsConnector

- [ApprovePage](#)

Example of a customized workflow (coming soon)



Manual:Extension/Workflows/Activity/ApprovePage: Difference between revisions

Latest revision as of 12:43, 25 October 2023 ([view source](#))

[Margit Link-Rodrigue](#) ([talk](#) | [contribs](#))

No edit summary

Tag: [Visual edit](#)

(No difference)

Latest revision as of 12:43, 25 October 2023

Description

The ApprovePage activity will set the status of a page from *draft* to *approved* status. Flagging will be done with a special user-context to avoid permission errors. This activity can only be used with pages that have the approval feature ([FlaggedRevs](#)) enabled.

Short profile	
Name	ApprovePage
Async	Yes
BPMN type	<code>bpmn:Task</code>
BPMN Extension Element "wf: type"	<code>approve_revision</code>

Properties

Name of property	Description	Type
<code>comment</code>	The comment to be saved with the approval	string
	The revision ID to approve. If not provided explicitly, the page revision of the	

Name of property	Description	Type
revision	workflow context will be used, which may be outdated.	int

Manual:Extension/Workflows/Activity/CustomForm:
Difference between revisions

Latest revision as of 15:00, 21 December 2021 (view source)
Margit Link-Rodrigue (talk | contribs)
No edit summary
Tag: Visual edit

(No difference)

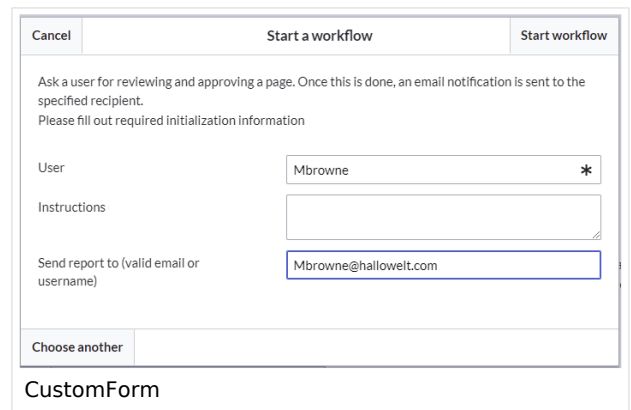
Latest revision as of 15:00, 21 December 2021

Contents

1	Description	15
2	Extension elements	15
2.1	Example	16
3	Properties	16
3.1	Example	16

Description

The *CustomForm* activity is a generic activity, which is based on a custom form. It collects data for the corresponding workflow, which shall be executed. Therefore, the input fields depend on the type of workflow, which is chosen by the user. In general, the data is always the same and differs only in relation to the particular workflow and the number of users required. The *CustomForm* activity mostly include blank values, which can also be inserted by default. This is related to the metadata maintenance associated with the use of wikitext.



Short profile	
Name	CustomForm
Async	No
Input/form	<i>Input depends on the workflow type, but in general:</i> <ul style="list-style-type: none">• User picker / Group picker• Textfield for comments• Textfield for mail / username• ...
BPMN Element	bpmn:userTask
BPMN Extension Element "wf: type"	custom_form

Extension elements

Name of extension element	Description	Type
formModule		element
formModule/module	ResourceLoader module to be loaded	string
formModule/class	Form definition class to be shown	string

Example

```
<bpmn:extensionElements>
  <wf:type>custom_form</wf:type>
  <wf:formModule>
    <wf:module>my.custom.form</wf:module>
    <wf:class>MyCustomForm</wf:class>
  </wf:formModule>
</bpmn:extensionElements>
```

This would load the ResourceLoader module called `my.custom.form` and expect it to have a JavaScript class `MyCustomForm` be implemented. Such a RL module may be provided by an extension, or a [custom gadget](#).

Properties

Name of property	Source	Description	Type
<code>due_date</code>	UIActivity	Due date for task completion	date/timestamp

Each field provided by the form specified in `formModule/class` needs to be listed as a property with a default value.

Example

If the form specified in `<wf:class>` looks like this

```
MyCustomForm = function( cfg, activity ) {
    MyCustomForm.parent.call( this, cfg, activity );
};

OO.inheritClass( MyCustomForm, workflows.object.form.Form );

MyCustomForm.prototype.getDefinitionItems = function() {
    return [
        {
            name: 'username',
            label: "Username",
            type: 'user_picker',
            required: true
        },
        {
            name: 'comment',
            label: 'Comment'
            type: 'wikitext',
        }
    ];
};
```

the properties can look like this

```
<bpmn:property name="username" />
<bpmn:property name="comment" default="Some default comment text" />
```


Given the activities `id` specified in the `<bpmn:userTask>` element was `"CollectData"`, connected activities would be able to access the output data in their respective properties like this:

```
<bpmn:task id="SomeActivity">
...
<bpmn:property name="user" default="{{CollectData.username}}"></bpmn:property>
<bpmn:property name="intro" default="{{CollectData.comment}}"></bpmn:property>
...
```

Manual:Extension/Workflows/Activity/EditRequest: Difference between revisions

Latest revision as of 15:24, 21 December 2021 ([view source](#))

[Margit Link-Rodrigue](#) ([talk](#) | [contribs](#))

(Created page with "==Description== [alt=EditRequest dialog|thumb|EditRequest dialog](#) The "EditRequest" activity asks a specified user to edit a page...")

Tag: [Visual edit](#)

(No difference)

Latest revision as of 15:24, 21 December 2021

Description

The *EditRequest* activity asks a specified user to edit a page where a workflow is currently running. This activity consists of a form that simply provides information about editing the corresponding page and then submitting the change.

Cancel	Edit request	Submit
Once you are done editing, click on "Submit" to mark task as completed		

EditRequest dialog

Short profile	
Name	EditRequest
Async	No
BPMN type	<code>bpmn:userTask</code>
BPMN Extension Element "wf:"	

Short profile	
type"	edit_request

Properties

Name of property	Source	Description	Type
<code>due_date</code>	UIActivity	Due date for task completion	date /timestamp
<code>assigned_user</code>	UIActivity	Name of the user that should edit a page. Can be plain username (e.g. "WikiSysop") or user page ("User:WikiSysop"); Support for User-ID is not required	string
<code>instructions</code>	InstructedActivity	Text that is shown to the user, so he knows what to do; visible in the UI / form but is optional	string

Manual:Extension/Workflows/Activity/GroupVote: Difference between revisions

Latest revision as of 14:02, 30 October 2023 ([view source](#))

[Margit Link-Rodrigue](#) ([talk](#) | [contribs](#))

No edit summary

Tag: [Visual edit](#)

(No difference)

Latest revision as of 14:02, 30 October 2023

Description

The activity *GroupVote* is responsible for collecting necessary data about the voting of a group on a special topic. Unlike the [UserVote](#), it is not possible to delegate the task. A user that is part of a group can accept or decline a vote and also leave a comment that justifies their decision. The voting result is determined by whatever threshold has been reached first and ends the activity.

Short profile	
Name	GroupVote
Async	No
BPMN type	bpmn:userTask
BPMN Extension Element "wf:type"	group_vote

Properties

Name of property	Description	Type
due_date	Due date for task completion	date /timestamp
assigned_group	Name of the user group that should vote; can be plain grouname as used in the DB (e.g. "sysop")	string
instructions	Text that is shown to the group of user, so they know what to vote about	string
users_voted	<p>Not to be set in the workflow definition. Used to store data during the activities life cycle. E.g.</p> <pre>[{ "userName": "UserA", "vote": "yes", "comment": "Good" }, { "userName": "UserB", "vote": "no", "comment": "Not good" }]</pre> <p>Can be accessed by follow up activitites by e.g.</p> <pre>{{<GroupVoteActivityID>.0.userName}}</pre>	string
threshold_yes_unit	can be <code>user</code> or <code>percent</code> - absolute number of users required to approve a page	user, percent
threshold_yes_value	number of users or percentage of users required to approve a page	
threshold_no_unit	can be <code>user</code> or <code>percent</code> - absolute number of users required to reject a page	user, percent
threshold_no_value	number of users or percentage of users required to reject a page	

Full example

Once one of the thresholds is reached, the activity will be completed and a `<bpmn:exclusiveGateway>` (referenced by `<bpmn:outgoing>`) will be called. It will choose its outgoing `<bpmn:sequenceFlow>` by mapping its `name` to the "type" of the threshold that has been reached.

In this example, after the first user either voted yes or no, the workflow will simply reach the end point:

```
<?xml version="1.0" encoding="UTF-8"?>
<bpmn:definitions xmlns:xsi="http://www.w3.org/2001/XMLSchema-instance" xmlns:wf="http://hallowelt.com/schema/bpmn/wf" xmlns:bpmn="http://www.omg.org/spec/BPMN/20100524/MODEL" xmlns:bpmndi="http://www.omg.org/spec/BPMN/20100524/DI" xmlns:dc="http://www.omg.org/spec/DD/20100524/DC" xmlns:di="http://www.omg.org/spec/DD/20100524/DI" id="Definitions_lvrgrfw" targetNamespace="http://bpmn.io/schema/bpmn" exporter="bpmn-js (https://demo.bpmn.io)" exporterVersion="8.7.1">
  <!-- Process part -->
  <bpmn:process id="Group_Vote" isExecutable="false">
    <bpmn:extensionElements>
      <wf:context>
        <wf:contextItem name="pageId"/>
        <wf:contextItem name="revision"/>
      </wf:context>
    </bpmn:extensionElements>
    <!-- StartEvent -->
    <bpmn:startEvent id="TheStart">
      <bpmn:outgoing>FromTheStartToGroupVote</bpmn:outgoing>
    </bpmn:startEvent>
    <bpmn:sequenceFlow id="FromTheStartToGroupVote" sourceRef="TheStart" targetRef="GroupVote"/>
    <!-- Collect group vote -->
    <bpmn:userTask id="GroupVote" name="GroupVote">
      <bpmn:extensionElements>
        <wf:type>group_vote</wf:type>
      </bpmn:extensionElements>
      <bpmn:property name="assigned_group">QM-reviewer</bpmn:property>
      <bpmn:property name="instructions">Please vote</bpmn:property>
      <bpmn:property name="comment"/>
      <bpmn:property name="vote">vote</bpmn:property>
      <bpmn:property name="users_voted"/>
      <bpmn:property name="due_date">{{#time:YmdHis|now + 7days}}</bpmn:property>
      <bpmn:property name="threshold_yes_unit">user</bpmn:property>
      <bpmn:property name="threshold_yes_value">1</bpmn:property>
      <bpmn:property name="threshold_no_unit">user</bpmn:property>
      <bpmn:property name="threshold_no_value">1</bpmn:property>
      <bpmn:incoming>FromTheStartToGroupVote</bpmn:incoming>
      <bpmn:outgoing>FromGroupVoteToGatewayGroupVote</bpmn:outgoing>
    </bpmn:userTask>
    <bpmn:sequenceFlow id="FromGroupVoteToGatewayGroupVote" sourceRef="GroupVote" targetRef="GatewayGroupVote"/>
    <!-- Check on voting -->
    <bpmn:exclusiveGateway id="GatewayGroupVote" name="GroupVote.vote">
      <bpmn:incoming>FromGroupVoteToGatewayGroupVote</bpmn:incoming>
      <bpmn:outgoing>FromGatewayGroupVoteToTheEndYes</bpmn:outgoing>
      <bpmn:outgoing>FromGatewayGroupVoteToTheEndNo</bpmn:outgoing>
    </bpmn:exclusiveGateway>
    <bpmn:sequenceFlow id="FromGatewayGroupVoteToTheEndYes" name="yes" sourceRef="GatewayGroupVote" targetRef="TheEnd"/>
    <bpmn:sequenceFlow id="FromGatewayGroupVoteToTheEndNo" name="no" sourceRef="GatewayGroupVote" targetRef="TheEnd"/>
    <!-- EndEvent -->
```

```
<bpmn:endEvent id="TheEnd">
  <bpmn:incoming>FromGatewayGroupVoteToTheEndYes</bpmn:incoming>
  <bpmn:incoming>FromGatewayGroupVoteToTheEndNo</bpmn:incoming>
</bpmn:endEvent>
</bpmn:process>
</bpmn:definitions>
```

Manual:Extension/Workflows/Activity/SendMail: Difference between revisions

Latest revision as of 15:14, 21 December 2021 (view source)

Margit Link-Rodrigue (talk | contribs)

(Created page with "==Description== The "SendMail" activity is a very generic activity. It is meant to send a report via mail after an action has been completed. This could be done after voting...")

Tag: Visual edit

(No difference)

Latest revision as of 15:14, 21 December 2021

Contents

1 Description 22
2 Properties 23
2.1 Input 23
2.2 Output 23
3 Extension elements 24

Description

The *SendMail* activity is a very generic activity. It is meant to send a report via mail after an action has been completed. This could be done after voting, but may also concern other activities in future, for example.

Following a quick overview:

Short profile	
Name	SendMail
Async	No
Input/form	-
Associated to	Approval Workflows, Collect Feedback Workflows
BPMN type	bpmn:Task

Properties

Input

Name of property	Source	Description	Type	Action
assigned_user	UserVote	Name of the user, who casted the vote	string	collect
comment	UserVote	Comment of the user	string	collect
vote	UserVote	Result of the voting (values: YES, NO)	string	collect
reportrecipient	CollectData	Mailadress of the user who was specified to receive an email after the workflow is finished	string	collect
timestamp		Timestamp of the date when mail is sent	timestamp	display
timestamp		Timestamp of the voting	timestamp	display
username		Name of the user, who casted a vote	string	display
groupname		Name of the group, who casted a vote	string	display
vote		Result of the voting	boolean / string	display
comment		Comment of the user concerning a wikipage	string	display

Output

Name of property	Source	Description	Type	Action
subject	SendMail	Subject of the mail incl. corresponding wikipage affected by previous activity	string	display
body	SendMail	Standardized text in a mail, which includes <ul style="list-style-type: none">the name of the user who casted the votea comment, which was left by the userthe voting result	string	display

Extension elements

Name of extension element	Description	Type
type		

Manual:Extension/Workflows/Activity/UserVote: Difference between revisions

Latest revision as of 13:31, 30 October 2023 (view source)
Margit Link-Rodrigue (talk | contribs)
No edit summary
Tag: Visual edit

(No difference)

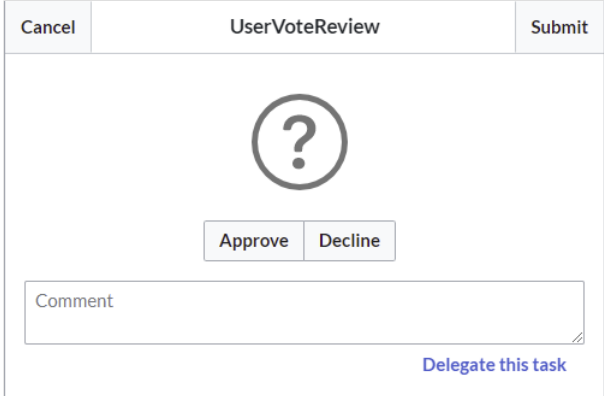
Latest revision as of 13:31, 30 October 2023

Contents

1	Description	25
2	Extension elements	26
3	Properties	26
3.1	Input	26
3.2	Output	27

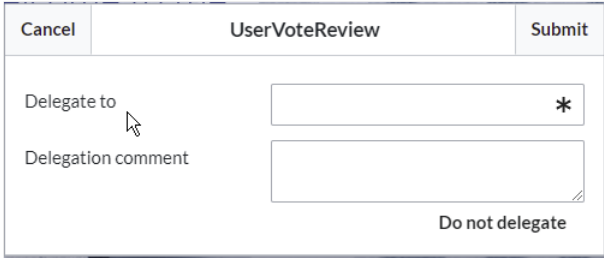
Description

The activity *UserVote* is responsible for collecting necessary data about the voting of a user on a special topic. The user who casts a vote has three options: accept, decline and delegate. If a user chooses "delegate", a dialog with a "UserPicker" must be provided. The chosen user must be notified and allowed to vote. The delegatee can re-delegate, but only to the primary user. A notification must be sent again. All delegation actions of the activity must be logged internally and be passed to the next activity.



The dialog titled "UserVoteReview" has a "Cancel" button on the left and a "Submit" button on the right. In the center is a large question mark icon. Below the icon are two buttons: "Approve" and "Decline". At the bottom is a text input field labeled "Comment" and a blue link "Delegate this task".

Dialog for user voting



The dialog titled "UserVoteReview" has a "Cancel" button on the left and a "Submit" button on the right. It contains two input fields: "Delegate to" with a dropdown menu and an asterisk, and "Delegation comment" with a text area. At the bottom right is a "Do not delegate" link.

Dialog for delegating

Short profile	
Name	UserVote
Async	No
Input/form	<ul style="list-style-type: none">• Submit / Cancel button• Voting button (approve/decline)• Textfield for comments• Link for delegating the task<ul style="list-style-type: none">○ Userpicker○ Textfield for comments
Associated to	<ul style="list-style-type: none">• ApprovalWorkflows• FeedbackWorkflows
BPMN type	bpmn:userTask

Extension elements

Name of extension element	Description	Type
form	Name of a *.form page on the wiki	string

Properties

Input

Name of property	Source	Description	Type	Action
assigned_user	CollectData	Name of the user that should vote. Can be plain username (e.g. "WikiSysop") or user page ("User:WikiSysop"); Support for User-ID is not required	string	none
instructions	CollectData	Text that is shown to the user, so he knows what to vote about; visible in the UI / form	string	display
due_date	CollectData	Due date for task completion	date /timestamp	none
delegate_to	UserVote	Name of the delegated user, that should vote instead of the specified user	string	collect & display
delegate_comment	UserVote	Text that is shown to the delegated user, so he knows what to vote about; visible in the UI / form	string	collect & display

Output

Name of property	Source	Description	Type	Action
vote	UserVote	Result of the voting (values: YES, NO)	boolean /string	collect
comment	UserVote	Comment of the user	string	collect
timestamp	UserVote	Timestamp of the vote	timestamp	collect
revisionid	UserVote	Revision ID that was voted on	integer	collect

Reference:BlueSpiceGroupManager: Difference between revisions

Latest revision as of 11:37, 8 August 2022 ([view source](#))

[Margit Link-Rodrigue](#) ([talk](#) | [contribs](#))

No edit summary

[Tag](#): 2017 source edit

(No difference)

Latest revision as of 11:37, 8 August 2022

Extension: BlueSpiceGroupManager

[→ all extensions](#)

Overview			
Description:	Administration interface for adding, editing and deleting user groups and their rights		
State:	stable	Dependency:	BlueSpice
Developer:	HalloWelt	License:	GPL-3.0-only

Overview			
Type:	BlueSpice	Category:	Administration
Edition:	BlueSpice free, BlueSpice pro, BlueSpice Farm, BlueSpice Cloud	Version:	4.1+
? View user help page			

Features

GroupManager allows to create new groups, and to edit and delete existing groups.

Using the group concept, you can soften the wiki principle to work with a more granular permissions model. Using groups, administrators can assign different permissions to users. For example, a group can have read permissions, but no edit permissions. Use the group concept wisely, since otherwise the cooperative dynamic suffers.

With the Group manager, you can:

- create groups
- edit groups
- delete groups (system groups cannot be deleted or edited)

Users are assigned to groups in the **User manager**. Permissions are assigned to groups in the **Permission manager**.

Technical Information

This information applies to BlueSpice 4. Technical details for BlueSpice Cloud can differ in some cases.

Requirements

MediaWiki: 1.36.0
BlueSpiceFoundation: 4.1

Integrates into

Special pages

- GroupManager

Permissions

Name	Description	Role
groupmanager-viewspecialpage	Access to the special page Special:GroupManager	accountmanager, admin, maintenanceadmin

API Modules

- bs-groupmanager

Hooks

- [LoadExtensionSchemaUpdates](#)
- [MWStakeCommonUIRegisterSkinSlotComponents](#)
- [MWStakeDynamicConfigRegisterConfigs](#)

Accessibility

Test status:	2-testing complete
Checked for:	Web, Authoring tool
Last test date:	2022-08-05
WCAG level:	AA
WCAG support:	partially supports (workaround: no)
Comments:	<p>keyboard access works.</p> <p>Screenreader: Extjs: Pagination in grids not announcing button labels at top and pagination buttons at bottom; actions menu has no keyboard support.</p> <p>switching between browse/focus modes enables finding out how many pages there are and moving to the next page.</p> <p>erm:27716</p>
Extension type:	core
Extension focus:	admin

Reference:FlaggedRevs: Difference between revisions

Latest revision as of 12:10, 10 July 2023 ([view source](#))

[Margit Link-Rodrigue](#) ([talk](#) | [contribs](#))

No edit summary

[Tag](#): 2017 source edit

(No difference)

Latest revision as of 12:10, 10 July 2023

Extension: FlaggedRevs

[→ all extensions](#)

Overview			
Description:	Allows for article content management by editors and reviewers.		
State:	stable	Dependency:	MediaWiki
Developer:	Aaron Schulz, Joerg Baach	License:	-
Type:	MediaWiki	Category:	Quality Assurance
Edition:	BlueSpice pro, BlueSpice Farm, BlueSpice Cloud	Version:	4.1- 4.2.x
? View help page			

Features

FlaggedRevs is a MediaWiki extension that activates an approval mechanism.

New versions of an article are initially marked as drafts and remain so until a user with revision rights checks and approves the page.

The MediaWiki extension is customized in BlueSpice. It uses the [FlaggedRevsConnector](#) to work alongside [workflows](#), realising the complete functionality of an editorial process with a final approval step.

Warning! The setting FR_INCLUDES_FREEZE for handling the state of included files of an approved wiki page has [no long term support by](#) and should not be introduced in a new wiki for that reason.

Reference:UnifiedTaskOverview: Difference between revisions

Latest revision as of 15:00, 5 December 2023 ([view source](#))

[Margit Link-Rodrigue](#) ([talk](#) | [contribs](#))

No edit summary

[Tag](#): 2017 source edit

(No difference)

Latest revision as of 15:00, 5 December 2023

Extension: UnifiedTaskOverview

[→ all extensions](#)

Overview			
Description:	Provides the special page "My tasks"		
State:	stable	Dependency:	MediaWiki
Developer:	Hallo Welt!	License:	-
Type:	MediaWiki	Category:	Personalization
Edition:	BlueSpice pro, BlueSpice Farm, BlueSpice Cloud	Version:	4.1+

The new overview page “My Tasks” (Special:My_tasks) allows users to view their upcoming tasks in the wiki. The special page can be reached via the [user menu](#) under *Personal Tools*> *Tasks*.

- The task list shows [workflow tasks](#) and pending [read confirmations](#).
- Tasks can be directly [created on a page](#). v4.4+
- When new tasks exist, a red notification icon in the user menu alerts the user.
- Each task card leads to the wiki page that is linked to the task.

Special

My tasks

My tasks

Q Search

Main Page

User feedback

WikiSysop initiated this workflow

Instructions: Should we add more content?

OrgChart

User vote

WikiSysop initiated this workflow

Instructions: Please approve the page.

Hallo Welt! GmbH

Read confirmation required

QM:Introduction

Read confirmation required

Creating a Page

Read confirmation required

QM:Quality Management Representative

Read confirmation required

Special page "My tasks"

Reference:Workflows: Difference between revisions

Latest revision as of 09:19, 22 February 2024 (view source)

Margit Link-Rodrigue (talk | contribs)

No edit summary

Tag: 2017 source edit

(No difference)

Latest revision as of 09:19, 22 February 2024

Extension: Workflows

→ all extensions

Overview			
Description:	Allows to define and execute various workflows on the wiki		
State:	stable	Dependency:	MediaWiki
Developer:	Hallo Welt!	License:	GPL-3.0-only
Type:	MediaWiki	Category:	Quality Assurance
	BlueSpice pro, BlueSpice Farm,		

Overview			
Edition:	BlueSpice Cloud	Version:	4.1+
? View user help page			

Features

Workflow functionality based on BPMN. BlueSpice included some standard workflows. Custom workflows can be created additionally.

Technical Information

This information applies to BlueSpice 4. Technical details for BlueSpice Cloud can differ in some cases.

Requirements

MediaWiki: 1.39.0

Forms: *

- OOJSPlus: *

Integrates into

- BlueSpiceDiscovery
- UnifiedTaskOverview
- Workflows

Special pages

- WorkflowsOverview

Permissions

Name	Description	Role
workflows-admin	Manage workflows	admin
workflows-execute	Initiate and advance workflows	admin, reviewer, editor
workflows-view	View workflow items	reader

User options

Name	Value
echo-subscriptions-email-workflow-cat	1

Hooks

- [ArticleDeleteComplete](#)
- [BeforePageDisplay](#)
- [BlueSpiceDiscoveryTemplateDataProviderAfterInit](#)
- [CodeEditorGetPageLanguage](#)
- [ContentHandlerDefaultModelFor](#)
- [LoadExtensionSchemaUpdates](#)
- [MWStakeCommonUIRegisterSkinSlotComponents](#)
- [MWStakeRunJobsTriggerRegisterHandlers](#)
- [PageSaveComplete](#)
- [SetupAfterCache](#)
- [SkinTemplateNavigation::Universal](#)
- [UnifiedTaskOverviewGetTaskDescriptors](#)

User:Margit.link-rodrique: Difference between revisions

Latest revision as of 13:43, 18 January 2023 ([view source](#))

[Margit Link-Rodrigue](#) ([talk](#) | [contribs](#))

No edit summary

[Tag](#): 2017 source edit

(No difference)

Latest revision as of 13:43, 18 January 2023
